

Appendix A – Sites Inventory

See Excel Sites Inventory File (attachment) for Detailed Listing of Sites/Parcels

The purpose of the Housing Element’s sites inventory is to identify and analyze specific land (sites) that is available and suitable for residential development. This analysis demonstrates El Monte’s capacity to accommodate the anticipated future residential development as determined by the city’s Regional Housing Need Allocation (RHNA).

ZONING BREAKDOWN

Zones accommodating each income category, which are determined based on allowed development densities, are listed below:

Income Category	Zone and Assumed Min/Max Density Range
Above Moderate	Neighborhood Commercial (C-1) – 0 Min/25 Max Retail Commercial (C-2) – 0/25 General Commercial (C-3) – 0/25 Gateway Specific Plan (GSP) – 0/36 Mixed/Multi-use (MMU) – 25/35 Office Commercial (O-C) – 0/25 Office Professional (OP) – 0/14 High Density Multi-family Residential (R-4) – 0/25 Religious Facilities Overlay (RF-OZ) - 0/25 One-family dwelling (R1-B) – 0/6 Downtown Specific Plan/Monte Vista (DSP/MV) – 0/50 Downtown Specific Plan/Station (DSP/ST) – 0/80 Downtown Specific Plan/Zocalo (DSP/ZC) – 0/65 Downtown Specific Plan/Main Street 2 (DSP/MS2) – 0/45 Urban Density (UD) – 35/50 Flair Park Flex (FP) – 0/14
Moderate	RF-OZ - 0/25 DSP/MV – 0/50 DSP/ST – 0/80 DSP/MS2 – 0/45 UD – 35/50
Low/Very Low	C-2 – 0/25 C-3 – 0/25 GSP – 0/36

	R-4 – 0/25 RF-OZ - 0/25 DSP/MV – 0/50 DSP/ST – 0/80 DSP/ZC – 0/65 DSP/MS – 0/45 UD – 35/50
--	--

PROJECTS IN THE PIPELINE

“Projects in the Pipeline” describes projects within the City’s entitlement or building plan check process but have not obtained a building permit as of July 1, 2021. Because these projects have development proposals being considered by the City, the potential units associated are considered likely to redevelop during the planning period and can be included within the sites inventory without additional justification.

<i>Projects in the Pipeline</i>						
<i>Project Address</i>	<i>Project Status as of June 2021</i>	<i>Projected Units</i>				
		<i>Extremely Low/Very Low Income</i>	<i>Low Income</i>	<i>Moderate Income</i>	<i>Above Moderate Income</i>	<i>Net Increase</i>
3434 Durfee Ave.	Entitlement Review	0	0	0	3	2
4001 Durfee Ave.	Entitlement Review	0	0	0	3	2
11605 Garvey Ave.	Entitlement Review	0	0	0	24	24
11301-11401 Garvey Ave.	Entitlement Approved	0	0	0	12	12
11100 Lambert Ave.	Entitlement Review	0	0	0	3	2
12015 Lower Azusa Rd	Entitlement Review	0	0	0	3	2
12522 Magnolia	Entitlement Review	0	0	0	3	2
3700 Monterrey Ave	Entitlement Review	0	0	0	85	85
2821 Musgrove Ave	Entitlement Review	0	0	0	3	2
11312 Orchard Dr., 3630-3700 Cypress Ave.	Entitlement Review	0	0	0	84	84
2114 Parkway Dr.	Entitlement Review	0	0	0	2	1
4123 Peck Rd.	Entitlement Review	0	0	0	14	14
3548 Santa Anita Ave.	Entitlement Review	0	0	0	28	28

4526 Santa Anita Ave.	Entitlement Review	0	0	0	14	14
12217 Schmidt Rd.	Entitlement Review	0	0	0	2	1
3446-3454 Tyler Ave. and 11016 Ramona Ave.	Entitlement Review	50	0	0	0	50
11640 Valley Blvd.	Entitlement Review	0	0	0	83	83
2616 Durfee Ave.	Building Plancheck	0	0	0	13	13
10334 Garvey Ave.	Building Plancheck	0	0	0	17	17
5232 Hammill Rd.	Building Plancheck	0	0	0	2	1
2711 Meeker Ave.	Building Plancheck	0	0	0	2	1
3637-3649 Tyler Ave.	Building Plancheck	18	35	0	0	53
TOTAL:	--	68	35	0	400	493

ACCESSORY DWELLING UNIT (ADU) AND JUNIOR ADU PRODUCTION

2018-2020 Based Projection

The City can proceed with the HCD-sanctioned argument to use the last three years (Jan 1, 2018 – Present) as the benchmark for future ADU production. A total of 19 ADUs or Junior ADUs were approved in 2018, followed by 35 in 2019, and 79 in 2020. The assumptions are based on the average ADU production from 2018 to 2020. The City can therefore assume a projection of 50 ADUs each year through the 2021-2029 planning period. This equates to 400 ADUs. Staff finds this number to be a very achievable goal, especially considering that from January through September 2021, a total of 85 ADUs or Junior ADUs have already been approved.

ADU Affordability – SCAG

To aide jurisdictions in estimating ADU development during the planning period, SCAG has drafted an ADU Affordability Memo, which provides affordability rates pre-certified by HCD. Therefore, El Monte used the same methodology as developed by SCAG, without the need for further justification.

<i>ADU Affordability</i>		
	LA County	El Monte ADUs
Extremely Low	15.0%	60
Very Low	8.5%	34
Low	44.6%	178
Moderate	2.1%	8
Above Moderate	29.8%	120
TOTAL:	100.0%	400

ANAYLSIS AND YIELD CALCULATIONS

Selection of Sites and Opportunity for Redevelopment

This sites analysis contains a selection of properties that are most likely to be developed at the various income levels over the 6th Cycle. For the purposes of identifying sites, this analysis considered existing residentially-zoned, specific plan zoned, overlay zoned, re-zoned or mixed-use zoned parcels that allowed for residential development based on the permitted densities within those zones.

Calculation of Unit Capacity

Capacity of sites identified as part of this sites analysis has been initially determined by multiplying the parcel size by the maximum allowed density for the given zoning designation. Of the maximum density allowed, only 70 percent of the total number was included, rounding down to the nearest whole number. This was increased to 75 percent for the Downtown Main Street Specific Plan, since there are greater opportunities to reach the maximum capacity.

No-Net-Loss

Under SB 166, the No-Net-Loss law has the following implications that the City must consider:

- Throughout the planning period, requires that a jurisdiction's sites inventory must maintain adequate sites to meet the remaining unmet housing needs for each income category;
- Requires a jurisdiction to identify additional sites if it approves a project at different income levels or densities than shown in the inventory; and
- Maintain a buffer of housing capacity (HCD recommends 20% to 30%) to help avoid no-net-loss implications, with particular focus at the Very-Low- and Low-income level categories. However, as El Monte's sites inventory RHNA requirement is well over 5,000, the recommended buffer percentage may be reduced.

REZONE OPPORTUNITIES

The following rezone opportunities were presented by City staff or discussed with City staff and project stakeholders and are included in this sites inventory.

City Identified Parcels

The City identified a number of corridors, intersections and parcels that may to accommodate additional housing, if they were to be rezoned. It is assumed that these parcels would fall under one (1) or more of the following categories: Commercial (C-O, C-1 and C-2 and portions of C-3 and C-4), Mixed/Multi-use (MMU) or High Density Multi-family Residential (R-4).

Flair Park Flex Zone

The 180-acre Flair Park Area was rezoned from General Manufacturing (M-2) to Office Professional (OP) in 2011 as part of the City’s General Plan Update. Hence, the area has many “legal non-conforming” industrial uses. The General Plan calls for this area to be a corporate office center with no housing. Taller structures would be situated directly adjacent to Flair Drive and the I-10 Freeway. The areas south of Telstar Avenue would be lower in height. In the past ten (10) years, the professional office market has not expanded enough to allow the original vision of Flair Park to fully become a reality. Staff recommends corporate office centers remain the focus along Flair Drive (and directly adjacent to the freeway, to maximize their visibility). However, for the areas to the south along Telstar Avenue and Whitmore Street, staff recommends expanding the list of uses to include offices of all types, research and technology uses, incubator space and work-live units. Densities would range from six (6) to 14 units per acre. The living portion of each work-live unit would also be limited to a maximum square footage (e.g. 600 to 800 square feet). Staff projects 475 units will be constructed as part of Cycle 6 of the Housing Element Update. Since the area does not currently permit housing, all the units will be the direct result of the up-zoning.

Garvey Avenue Corridor

For decades, the Garvey Avenue Corridor was dominated with motels, auto related businesses and strip commercial uses. Per the 2011 General Plan, the zoning was changed to Mixed/Multi-Use (MMU). The vision calls for a mix of horizontal and vertical mixed-use projects with a maximum height of four (4) stories and residential densities of up to 35 units per acre. Garvey Avenue is transit rich with 13 bus lines connecting the corridor to Downtown Los Angeles to the west, Pasadena to the north, Pomona to the east and Norwalk to the south. While the area has seen significant development interest over the past several years, many non-conforming auto-related uses remain. The corridor has a significant number of underutilized sites that will be ideal for infill housing.

Staff is in the early stages of creating a new “Urban Density” zone for the corridor, with densities as high as 50 units per acre. To reach such higher densities, the focus will be on vertical stand-alone or vertical mixed-use projects up to five (5) or six (6) stories in height. As already noted, the corridor is very transit rich. In addition, the street itself is very wide, and can incorporate many streetscape improvements (e.g., landscape islands, bump-outs at intersections, bicycle lanes). A total of 1,345 units are projected for the Garvey Corridor as part of Cycle 6 of the Housing Element Update. Since the area currently permits housing at much lower densities, approximately 30 percent of the units (404 units) will be the direct result of the up-zoning.

5-Points Area

The 5-Points Area is a major roadway hub, where Garvey Avenue, Valley Boulevard, Mountain View Road and Cogswell Road intersect. It is currently developed with a cluster of large shopping centers. Along the edges of the area are auto repair uses, offices, trailer sales and vacant land.

Currently, there is no formal vision for the area. The western portion along Garvey Avenue is sometimes included as part of the Garvey Corridor and the northwest portion along Valley Boulevard is sometimes included as part of the City’s auto hub. The current zoning allows multiple-family residential densities of up to 25 units per acre throughout the majority of the 5-Points area.

Staff recommends combining the properties in this area to create the Five Points Area, which will focus on a mix of regional commercial uses and urban housing. The same “Urban Density Housing” zoning proposed for the Garvey Corridor is proposed for the Five Points Area. This would allow densities as high as 50 units per acre. A total of 1,100 units are projected for the Five Points Area as part of Cycle 6 of the Housing Element Update. Since the area currently permits housing at much lower densities, approximately half of the units (550 units) will be the direct result of the up-zoning.

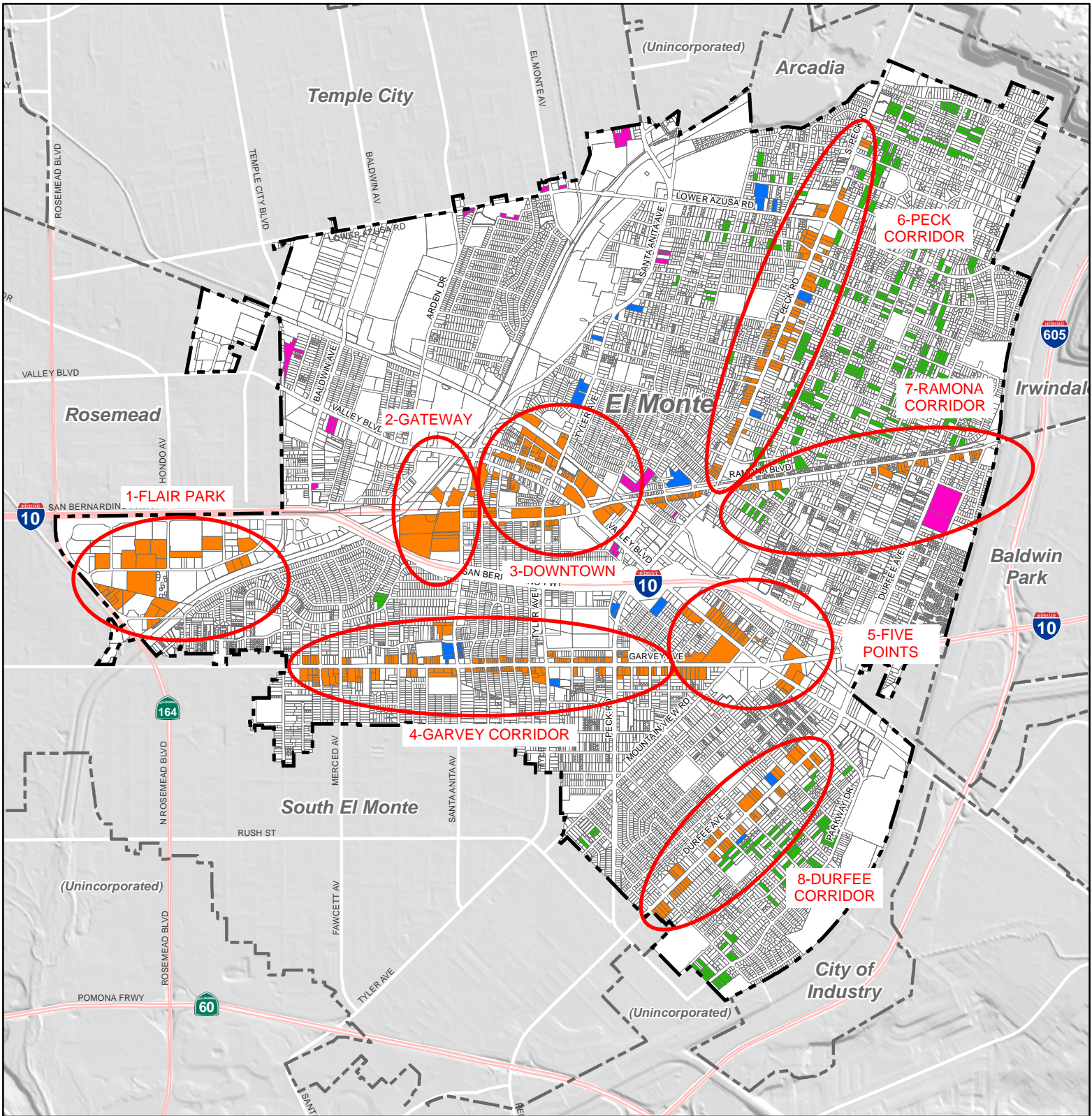
Religious Facilities Sites

Religious Facilities sites were identified by the City and project stakeholders as potential sites for accommodating very-low and low-income housing. Recent state law has provided flexibility for religious facilities sites to accommodate housing on their parking lots. This process could also do more than provide housing, but create a sense of community and fellowship between members of the religious facility, new residents that would populate the housing and surrounding businesses and/or residents. It was assumed that these parcels would not have a minimum density, since that would likely depend on the size of their parking lot. However, staff did identify a maximum density of 25 units per acre.

A total of 222 units are projected for religious facilities as part of Cycle 6 of the Housing Element Updates. Since housing is not currently permitted in combination with religious facilities, all the units will be the direct result of the up-zoning. See Sites Inventory Table B for Religious Facilities sites to be rezoned to the Religious Facilities Overlay Zone (RF-OZ) category.

CONCLUSION

As previously noted, because of recent changes to state law and recent updates to the Zoning Code, 400 ADUs are projected as part of Cycle 6 of the Housing Element. In addition, if all the rezone opportunities are implemented, a total of 1,651 additional units will be constructed, that would not have occurred otherwise. Combined, these total 24.1 percent of the City’s total RHNA. In consideration of the initial analysis and strategies outlined above, the following Appendix A: Sites Inventory summarizes the potential sites to satisfy the Cycle 6 RHNA requirements.



CITY OF EL MONTE, CA

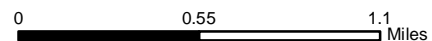
HOUSING ELEMENT UPDATE 6TH CYCLE - SITES INVENTORY ANALYSIS

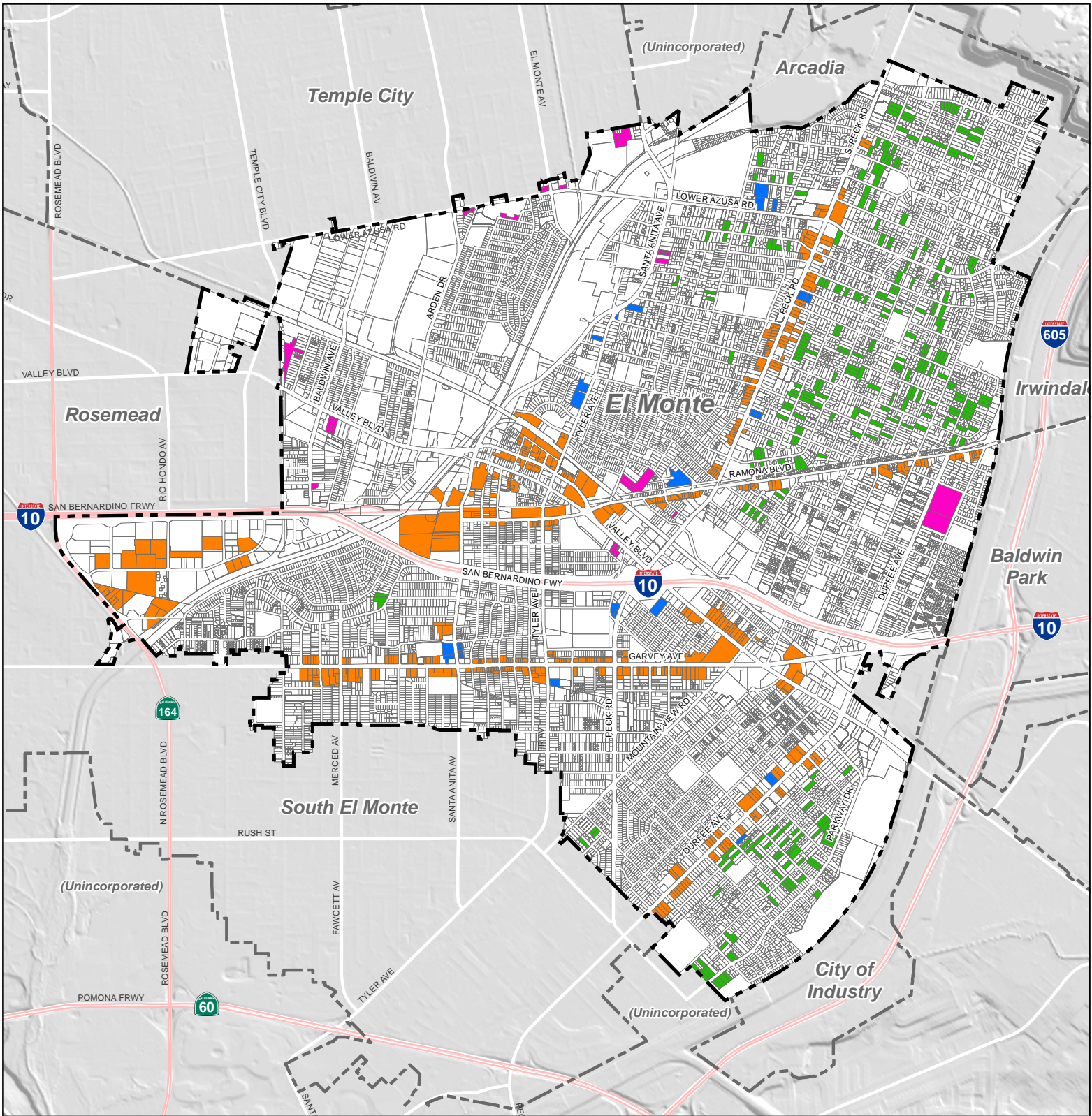
FIGURE A-0: CITYWIDE KEY MAP

6TH CYCLE SITES

- Identified Areas and Corridors
- Multifamily Infill and Specific Sites (Citywide)
- Religious Facilities (Citywide)
- Single-Family Sites (Citywide)

September 26, 2021





CITY OF EL MONTE, CA

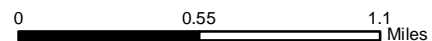
HOUSING ELEMENT UPDATE 6TH CYCLE - SITES INVENTORY ANALYSIS

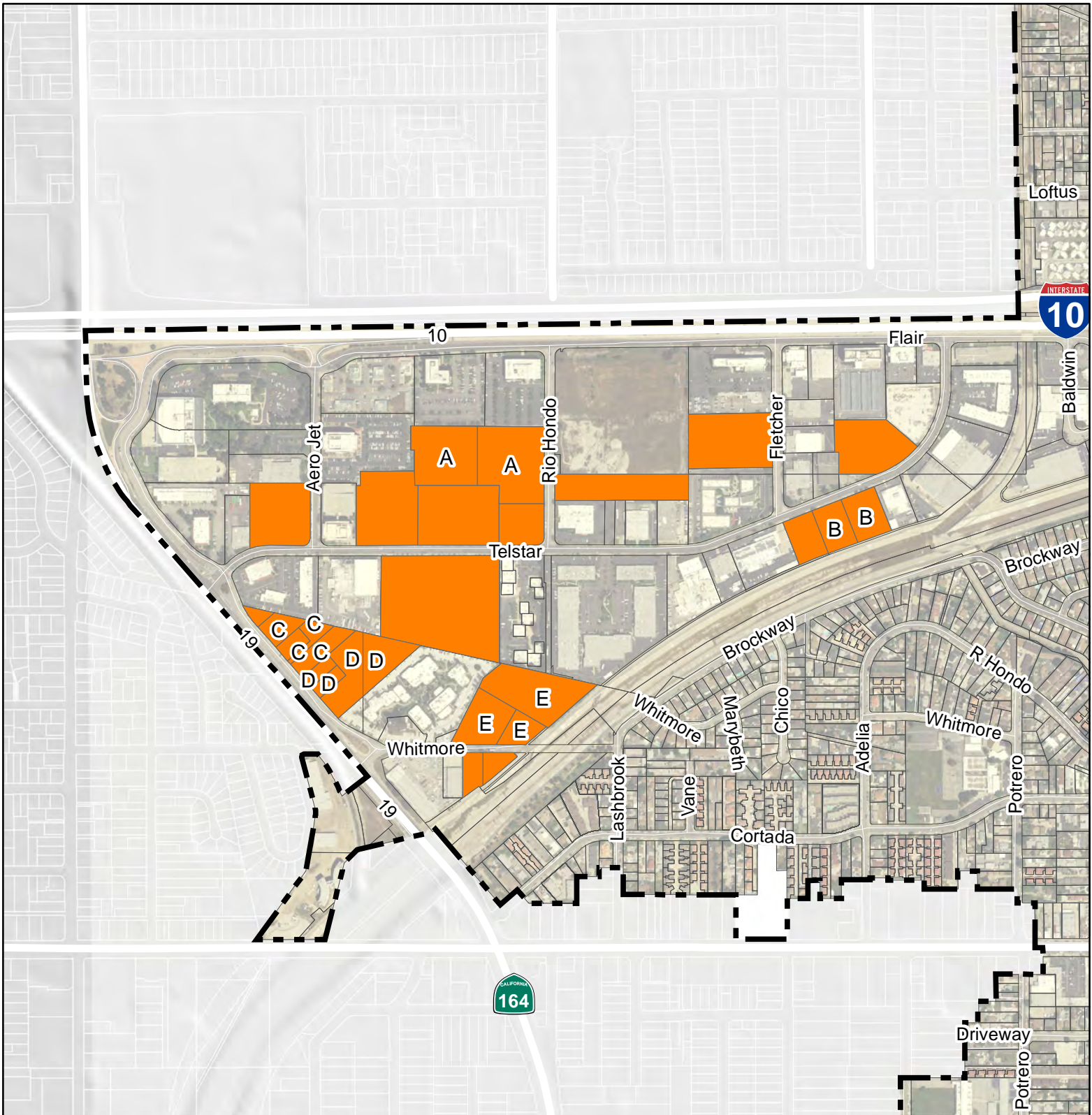
FIGURE A-00: CITYWIDE SITES

6TH CYCLE SITES

- Identified Areas and Corridors
- Multifamily Infill and Specific Sites (Citywide)
- Religious Facilities (Citywide)
- Single-Family Sites (Citywide)

September 26, 2021





CITY OF EL MONTE, CA

HOUSING ELEMENT UPDATE 6TH CYCLE - SITES INVENTORY ANALYSIS

FIGURE A1: AREA 1 - FLAIR PARK

6TH CYCLE SITES

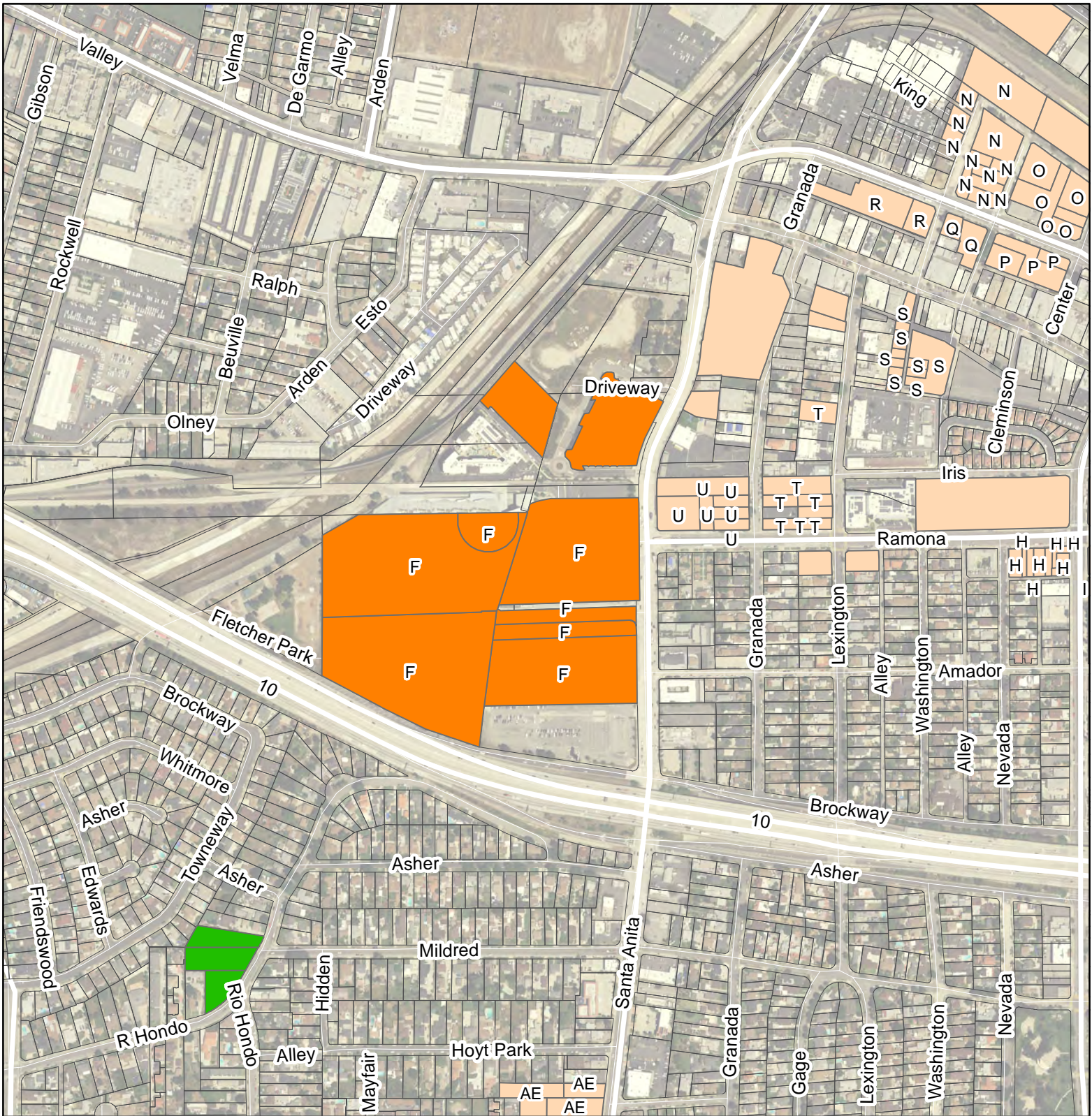
- Area 1 - Flair Park Sites
- Additional 6th Cycle Sites
- Multifamily Infill and Specific Sites
- Religious Facilities
- Single-Family Sites

September 26, 2021



0 0.1 0.2 Miles





CITY OF EL MONTE, CA

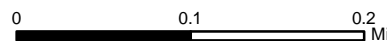
HOUSING ELEMENT UPDATE 6TH CYCLE - SITES INVENTORY ANALYSIS

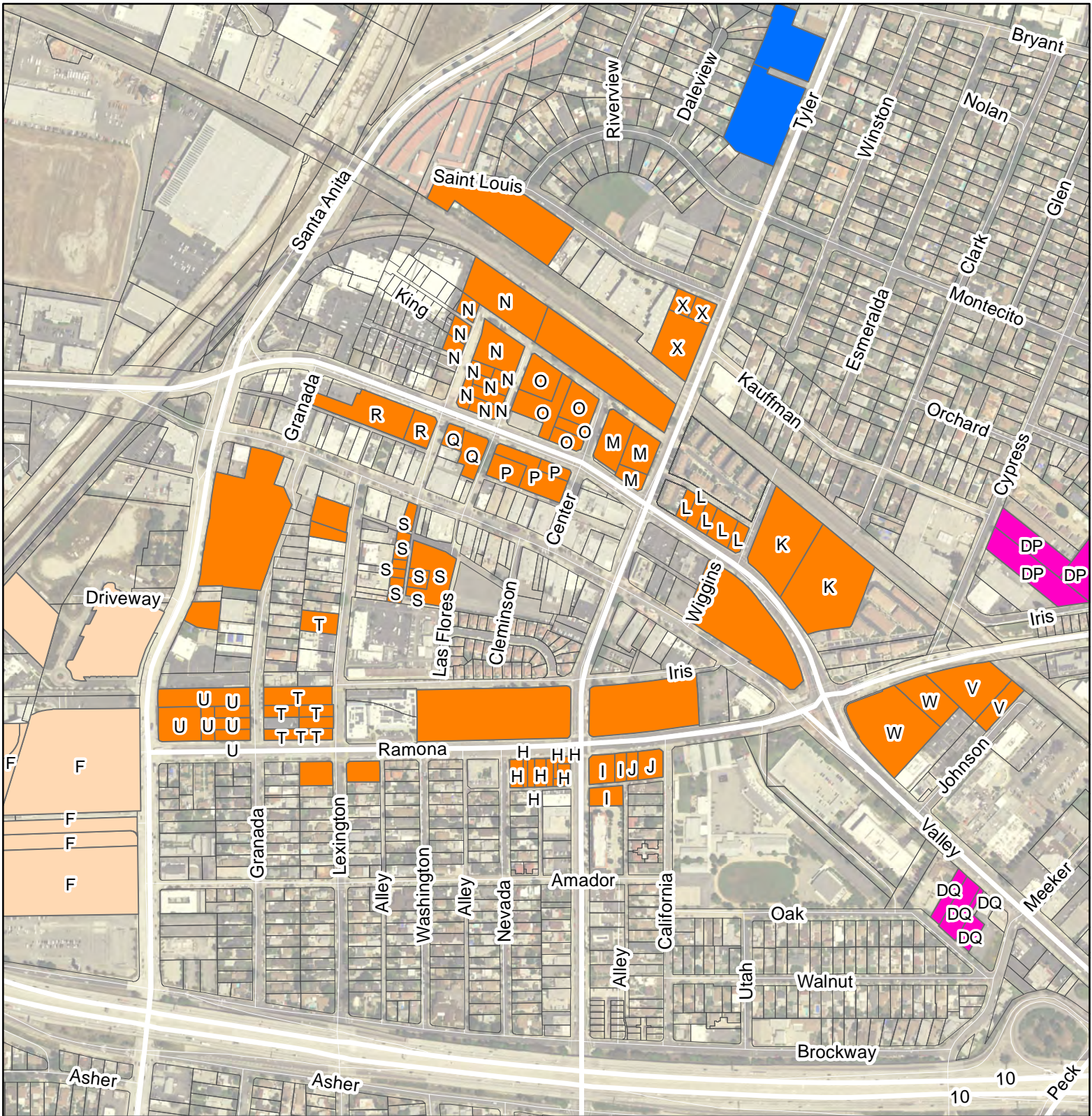
FIGURE A2: AREA 2 - GATEWAY

6TH CYCLE SITES

- Area 2 Gateway Sites
- Additional 6th Cycle Sites
- Multifamily Infill and Specific Sites
- Religious Facilities
- Single-Family Sites

September 26, 2021





CITY OF EL MONTE, CA

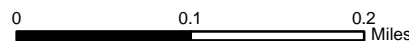
HOUSING ELEMENT UPDATE 6TH CYCLE - SITES INVENTORY ANALYSIS

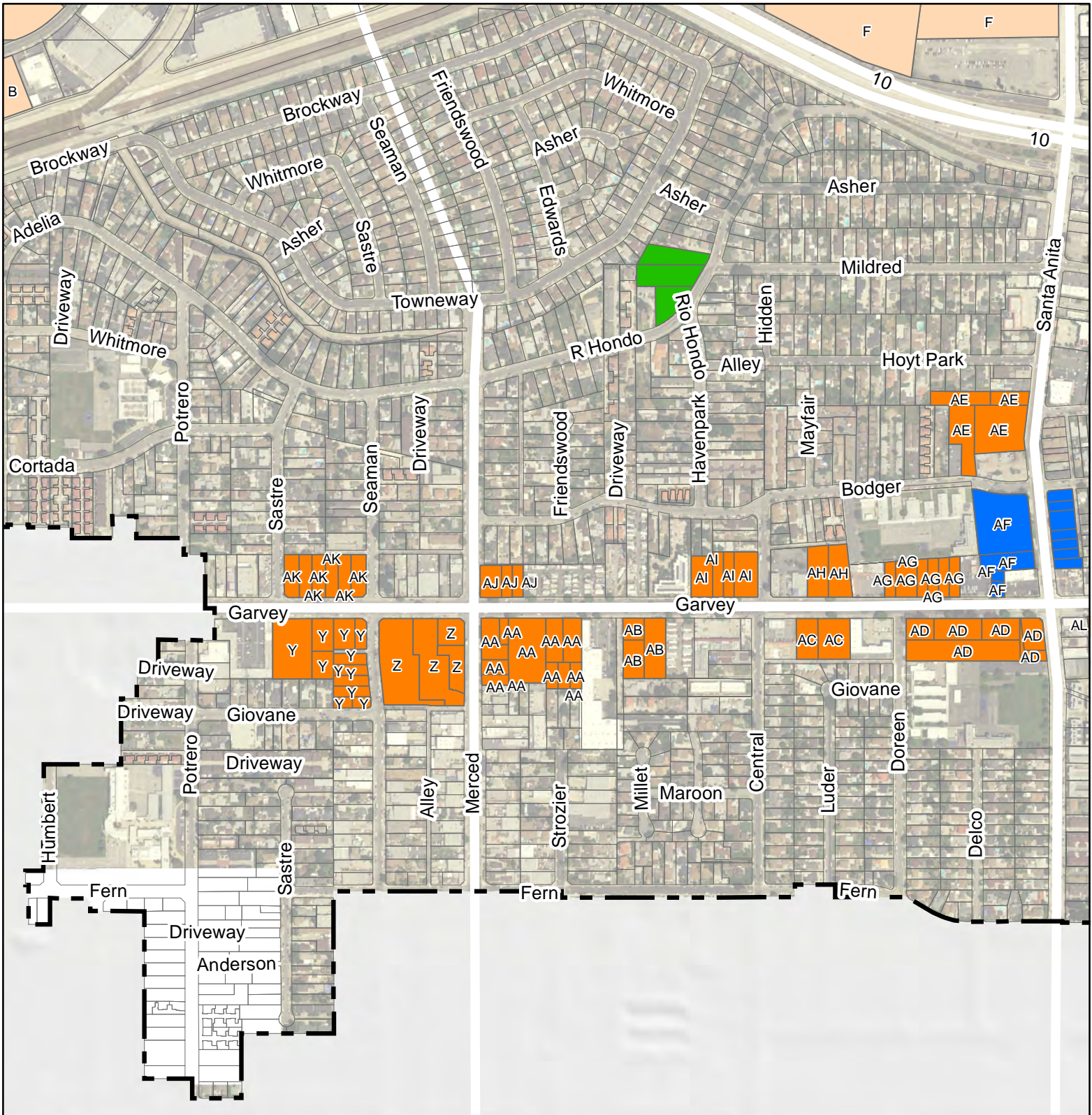
FIGURE A3: AREA 3 - DOWNTOWN

6TH CYCLE SITES

- Area 3 - Downtown Sites
- Additional 6th Cycle Sites
- Multifamily Infill and Specific Sites
- Religious Facilities
- Single-Family Sites

September 26, 2021





CITY OF EL MONTE, CA

HOUSING ELEMENT UPDATE 6TH CYCLE - SITES INVENTORY ANALYSIS

FIGURE A4-W: AREA 4 - GARVEY CORRIDOR (WEST)

6TH CYCLE SITES

- Area 4 - Garvey Corridor (East)
- Additional 6th Cycle Sites
- Multifamily Infill and Specific Sites
- Religious Facilities
- Single-Family Sites

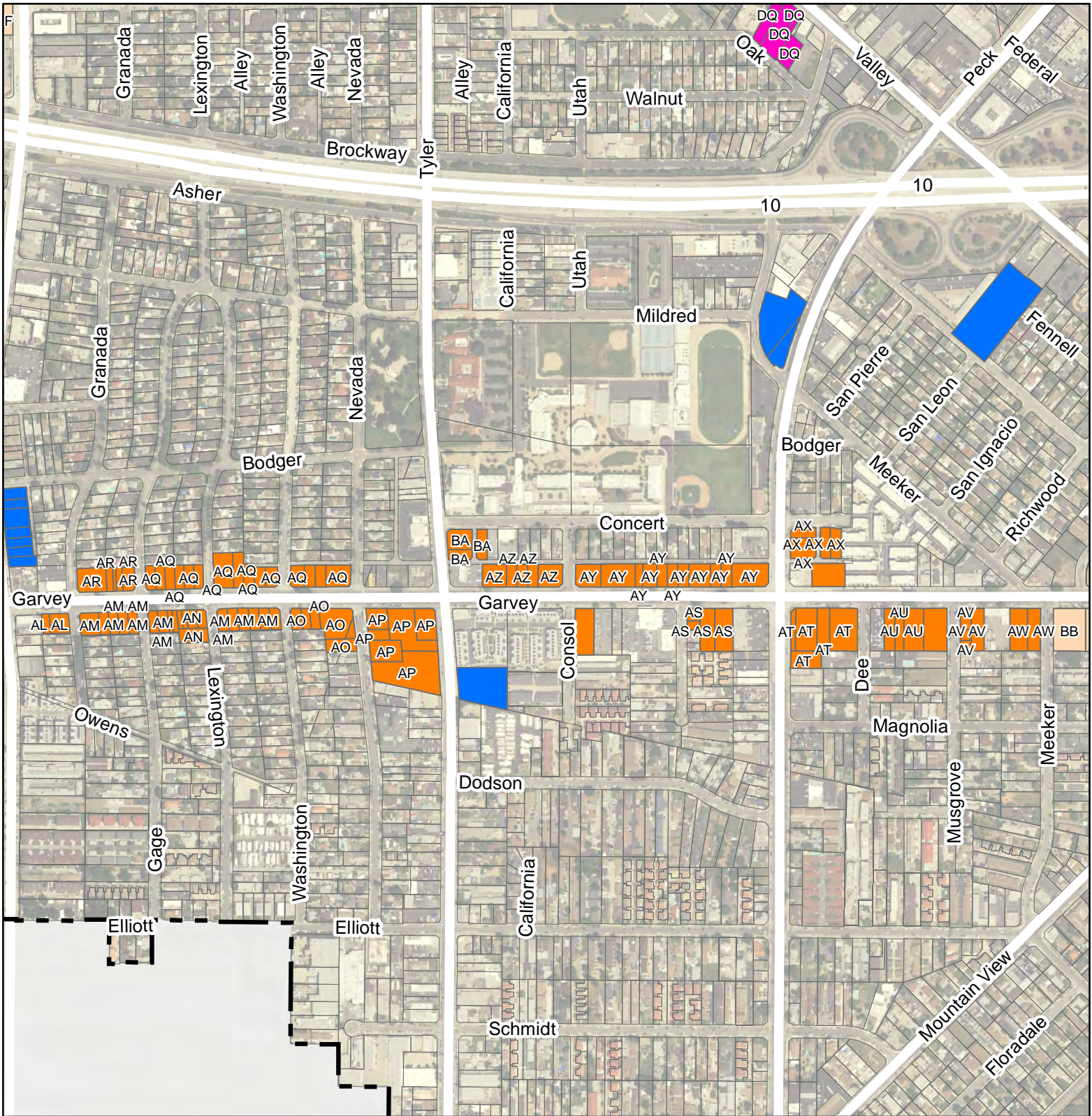
September 26, 2021



0 0.1 0.2 Miles



VERONICA TAY AND ASSOCIATES



CITY OF EL MONTE, CA

HOUSING ELEMENT UPDATE 6TH CYCLE - SITES INVENTORY ANALYSIS

FIGURE A4-E: AREA 4 - GARVEY CORRIDOR (EAST)

6TH CYCLE SITES

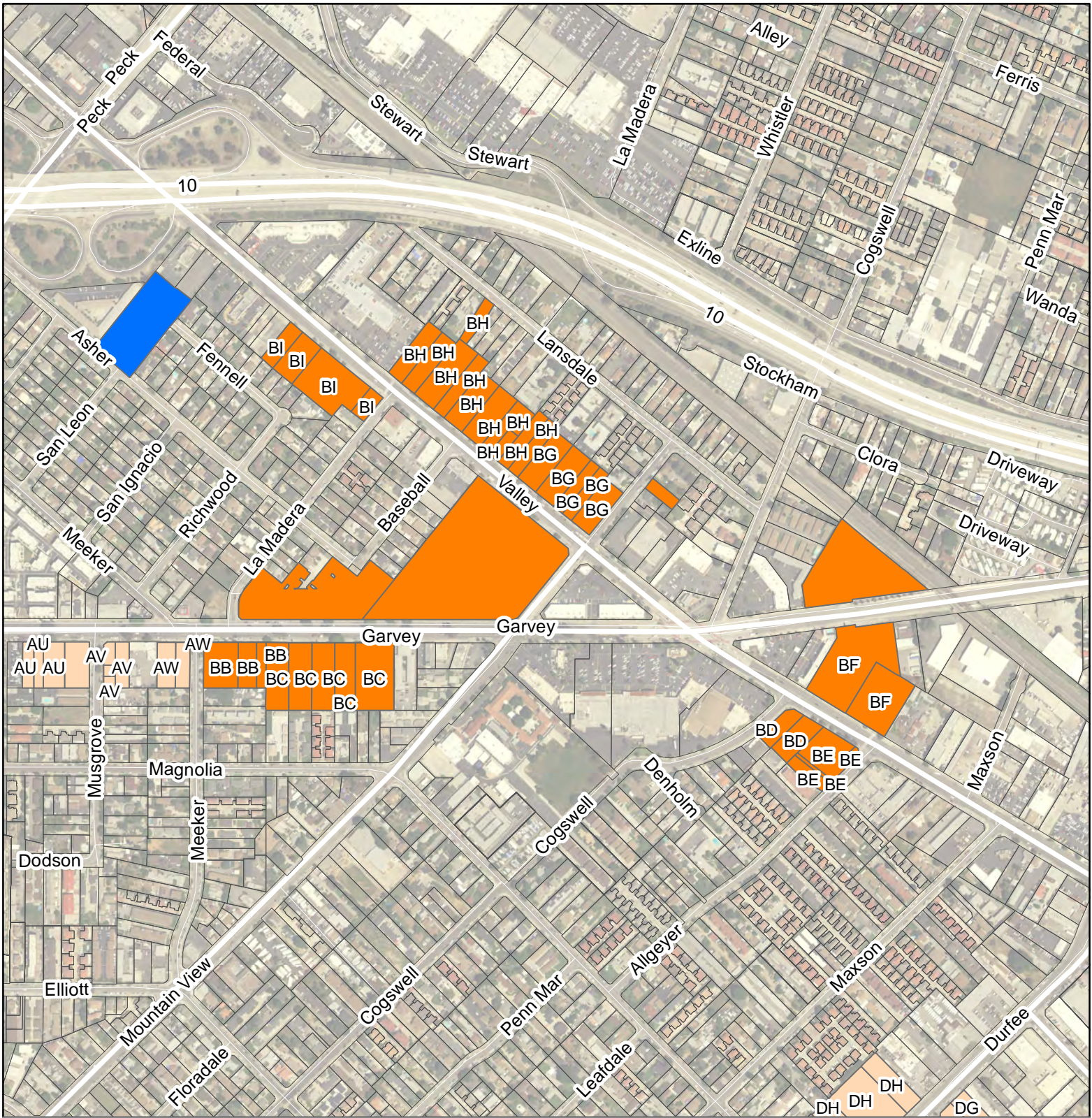
- Area 4 - Garvey Corridor (East)
- Additional 6th Cycle Sites
- Multifamily Infill and Specific Sites
- Religious Facilities
- Single-Family Sites

September 26, 2021



0 0.1 0.2 Miles





CITY OF EL MONTE, CA

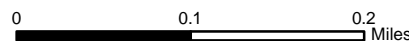
HOUSING ELEMENT UPDATE 6TH CYCLE - SITES INVENTORY ANALYSIS

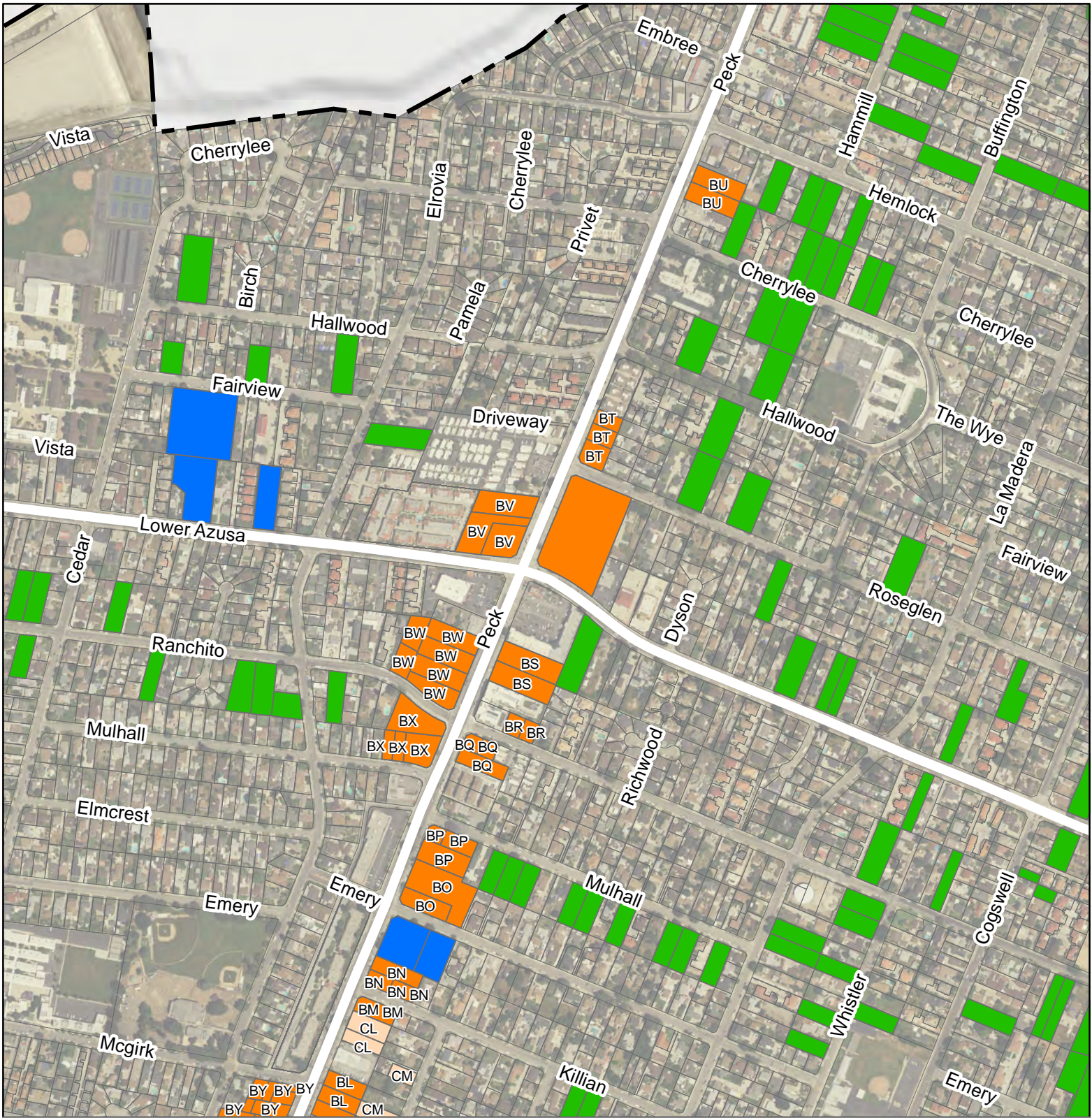
FIGURE A5: AREA 5 - FIVE POINTS

6TH CYCLE SITES

- Area 5 - Five Points Sites
- Additional 6th Cycle Sites
- Religious Facilities
- Single-Family Sites
- Multifamily Infill and Specific Sites

September 26, 2021





CITY OF EL MONTE, CA

HOUSING ELEMENT UPDATE 6TH CYCLE - SITES INVENTORY ANALYSIS

FIGURE A6-N: AREA 6 - PECK CORRIDOR (NORTH)

6TH CYCLE SITES

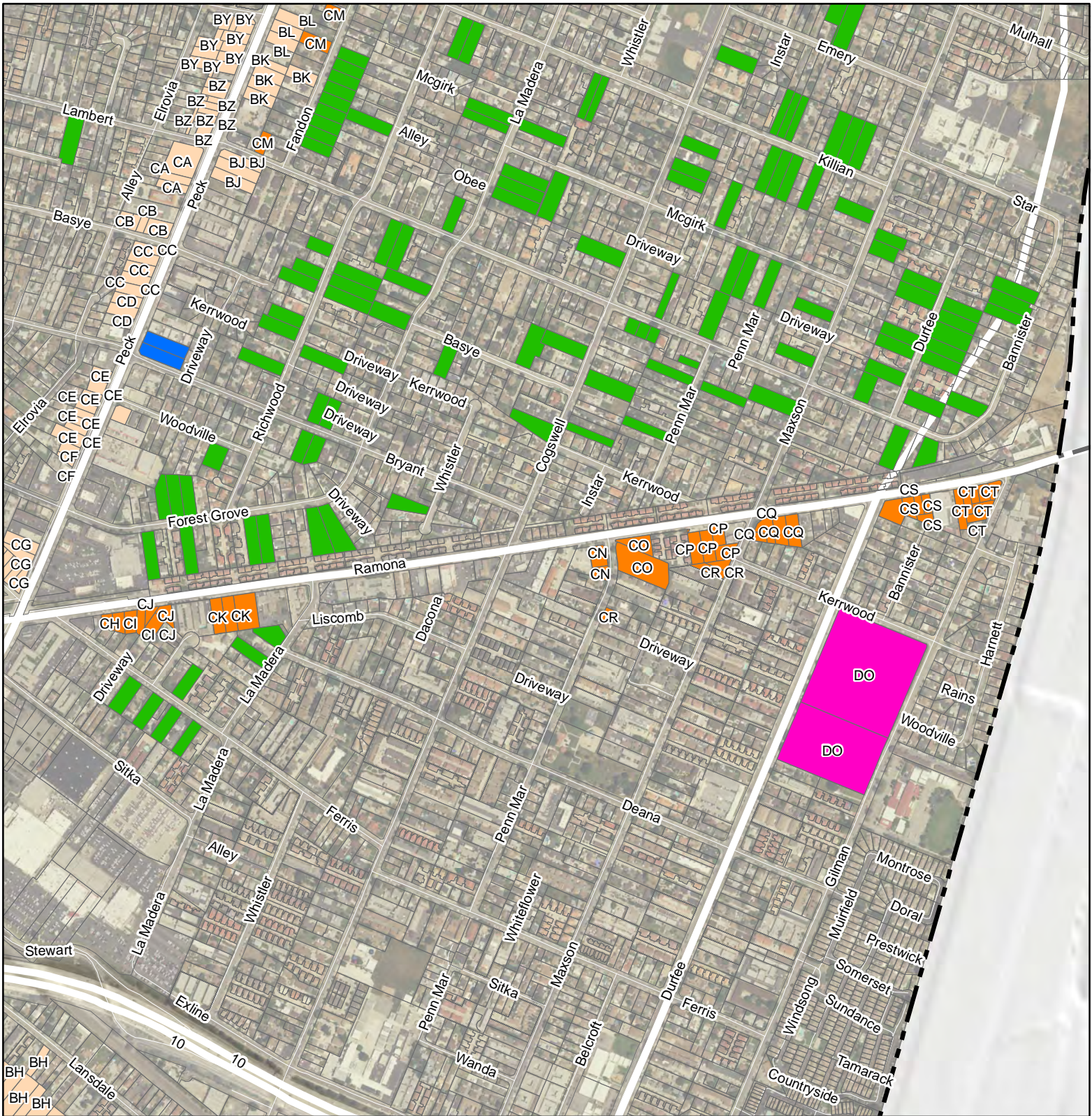
- Area 6 - Peck Corridor (North)
- Additional 6th Cycle Sites
- Multifamily Infill and Specific Sites
- Religious Facilities
- Single-Family Sites

September 26, 2021



0 0.1 0.2 Miles





CITY OF EL MONTE, CA

HOUSING ELEMENT UPDATE 6TH CYCLE - SITES INVENTORY ANALYSIS

FIGURE A7: AREA 7 - RAMONA CORRIDOR

6TH CYCLE SITES

- Area 8 - Durfee Corridor Sites
- Additional 6th Cycle Sites
- Multifamily Infill and Specific Sites
- Religious Facilities
- Single-Family Sites

September 26, 2021



0 0.1 0.2 Miles



Table A: Housing Element Sites Inventory, Table Starts in Cell A2

Jurisdiction Name	Site Address/Intersection	5 Digit ZIP Code	Assessor Parcel Number	Consolidated Sites	General Plan Designation (Current)	Zoning Designation (Current)	Minimum Density Allowed (units/acre)	Max Density Allowed (units/acre)	Parcel Size (Acres)	Existing Use/Vacancy	Infrastructure	Publicly-Owned	Site Status	Identified in Last/Last Two Planning Cycle(s)	Lower Income Capacity	Moderate Income Capacity	Above Moderate Income Capacity	Total Capacity
EL MONTE CA	4526 SANTA ANITA AVE	91731-1318	8570003010		NC	C-1	0	25	0.65	Vacant	YES - Planned	NO - Privately-Owned	Pending	Not Used in Prior Housing Element			14	14
EL MONTE CA	4548 SANTA ANITA AVE	91731-1318	8570004004	DS	NC	C-1	0	25	0.33	Residential	YES - Current	NO - Privately-Owned	Available	Not Used in Prior Housing Element			6	6
EL MONTE CA	4542 SANTA ANITA AVE	91731-1318	8570004005	DS	NC	C-1	0	25	0.34	Residential	YES - Current	NO - Privately-Owned	Available	Not Used in Prior Housing Element			5	5
EL MONTE CA	VALLEY BLVD / EASTMONT AVE		8567021905	V	DC	C-2	0	25	0.40	Government	YES - Current	YES - City-Owned	Available	Not Used in Prior Housing Element	7			7
EL MONTE CA	11126 RAMONA BLVD	91731-3149	8567021906	V	DC	C-2	0	25	1.17	Commercial	YES - Current	NO - Privately-Owned	Available	Not Used in Prior Housing Element	20			20
EL MONTE CA	11730 RAMONA BLVD	91732	8567010015		GC	C-2	0	25	0.68	Vacant	YES - Planned	NO - Privately-Owned	Pending	Not Used in Prior Housing Element	39			39
EL MONTE CA	11718 RAMONA BLVD	91732-2310	8567010016	CK	GC	C-2	0	25	0.38	Commercial	YES - Current	NO - Privately-Owned	Available	Not Used in Prior Housing Element			7	7
EL MONTE CA	11706 RAMONA BLVD	91732-2300	8567010026	CK	GC	C-2	0	25	0.38	Commercial	YES - Current	NO - Privately-Owned	Available	Not Used in Prior Housing Element			7	7
EL MONTE CA	10733 LOWER AZUSA RD		8574026021		GC	C-2	0	25	0.29	Commercial	YES - Current	NO - Privately-Owned	Available	Not Used in Prior Housing Element			5	5
EL MONTE CA	10316 LOWER AZUSA RD		8576001020	DT	GC	C-2	0	25	0.23	Commercial	YES - Current	NO - Privately-Owned	Available	Not Used in Prior Housing Element			4	4
EL MONTE CA	10320 LOWER AZUSA RD		8576001021	DT	GC	C-2	0	25	0.17	Commercial	YES - Current	NO - Privately-Owned	Available	Not Used in Prior Housing Element			3	3
EL MONTE CA	10330 LOWER AZUSA RD		8576001022	DT	GC	C-2	0	25	0.12	Commercial	YES - Current	NO - Privately-Owned	Available	Not Used in Prior Housing Element			2	2
EL MONTE CA	10336 LOWER AZUSA RD		8576001023	DT	GC	C-2	0	25	0.21	Commercial	YES - Current	NO - Privately-Owned	Available	Not Used in Prior Housing Element			4	4
EL MONTE CA	10534 LOWER AZUSA RD		8576002015		GC	C-2	0	25	0.70	Commercial	YES - Current	NO - Privately-Owned	Available	Not Used in Prior Housing Element			12	12
EL MONTE CA	11330 VALLEY BLVD	91731-3228	8579020004	DQ	GC	C-2	0	25	0.28	Vacant	YES - Current	NO - Privately-Owned	Available	Not Used in Prior Housing Element			5	5
EL MONTE CA	11342 VALLEY BLVD	91731-3228	8579020005	DQ	GC	C-2	0	25	0.05	Vacant	YES - Current	NO - Privately-Owned	Available	Not Used in Prior Housing Element			1	1
EL MONTE CA	11229 1/2 OAK ST	91731-3219	8579020010	DQ	GC	C-2	0	25	0.24	Vacant	YES - Current	NO - Privately-Owned	Available	Not Used in Prior Housing Element			3	3
EL MONTE CA	11338 VALLEY BLVD	91731-3228	8579020011	DQ	GC	C-2	0	25	0.49	Vacant	YES - Current	NO - Privately-Owned	Available	Not Used in Prior Housing Element			9	9
EL MONTE CA	10693 LOWER AZUSA RD		8585027026		GC	C-2	0	25	0.50	Commercial	YES - Current	NO - Privately-Owned	Available	Not Used in Prior Housing Element			9	9
EL MONTE CA	11114 RAMONA BLVD	91731-3139	8567021014	W	DC	C-3	0	25	0.68	Commercial	YES - Current	NO - Privately-Owned	Available	Not Used in Prior Housing Element			12	12
EL MONTE CA	11104 RAMONA BLVD	91731-3139	8567021015	W	DC	C-3	0	25	2.08	Commercial	YES - Current	NO - Privately-Owned	Available	Not Used in Prior Housing Element			34	34
EL MONTE CA	RAMONA BLVD / RICHWOOD AVE		8567011002	CJ	GC	C-3	0	25	0.20	Commercial	YES - Current	NO - Privately-Owned	Available	Not Used in Prior Housing Element			3	3
EL MONTE CA	11632 RAMONA BLVD	91732-2308	8567011015	CH	GC	C-3	0	25	0.16	Commercial	YES - Current	NO - Privately-Owned	Available	Not Used in Prior Housing Element			3	3
EL MONTE CA	11638 RAMONA BLVD	91732-2308	8567011016	CH	GC	C-3	0	25	0.20	Commercial	YES - Current	NO - Privately-Owned	Available	Not Used in Prior Housing Element			4	4
EL MONTE CA	11662 RAMONA BLVD	91732-2308	8567011017	CI	GC	C-3	0	25	0.24	Commercial	YES - Current	NO - Privately-Owned	Available	Not Used in Prior Housing Element			3	3
EL MONTE CA	11668 RAMONA BLVD	91732-2308	8567011018	CI	GC	C-3	0	25	0.18	Commercial	YES - Current	NO - Privately-Owned	Available	Not Used in Prior Housing Element			3	3
EL MONTE CA	11672 RAMONA BLVD	91732-2308	8567011019	CJ	GC	C-3	0	25	0.12	Commercial	YES - Current	NO - Privately-Owned	Available	Not Used in Prior Housing Element			2	2
EL MONTE CA	11678 RAMONA BLVD	91732-2308	8567011020	CJ	GC	C-3	0	25	0.22	Commercial	YES - Current	NO - Privately-Owned	Available	Not Used in Prior Housing Element			3	3
EL MONTE CA	11306 RAMONA BLVD		8567023001	DU	GC	C-3	0	25	0.27	Commercial	YES - Current	NO - Privately-Owned	Available	Not Used in Prior Housing Element			5	5
EL MONTE CA	RAMONA BLVD / LEE LN		8567023030	DU	GC	C-3	0	25	0.64	Commercial	YES - Current	NO - Privately-Owned	Available	Not Used in Prior Housing Element			11	11
EL MONTE CA			8567023031	DU	GC	C-3	0	25	0.28	Commercial	YES - Current	NO - Privately-Owned	Available	Not Used in Prior Housing Element			5	5
EL MONTE CA			8567023032	DU	GC	C-3	0	25	0.13	Commercial	YES - Current	NO - Privately-Owned	Available	Not Used in Prior Housing Element			2	2
EL MONTE CA			8567023033	DU	GC	C-3	0	25	0.13	Commercial	YES - Current	NO - Privately-Owned	Available	Not Used in Prior Housing Element			2	2
EL MONTE CA			8567023034	DU	GC	C-3	0	25	0.13	Commercial	YES - Current	NO - Privately-Owned	Available	Not Used in Prior Housing Element			2	2
EL MONTE CA	11346 RAMONA BLVD		8567023035	DU	GC	C-3	0	25	0.17	Commercial	YES - Current	NO - Privately-Owned	Available	Not Used in Prior Housing Element			3	3
EL MONTE CA	11450 RAMONA BLVD		8567024003	DV	GC	C-3	0	25	0.13	Commercial	YES - Current	NO - Privately-Owned	Available	Not Used in Prior Housing Element			2	2
EL MONTE CA	11456 RAMONA BLVD		8567024004	DV	GC	C-3	0	25	0.27	Commercial	YES - Current	NO - Privately-Owned	Available	Not Used in Prior Housing Element			5	5
EL MONTE CA	11458 RAMONA BLVD		8567024005	DV	GC	C-3	0	25	0.13	Commercial	YES - Current	NO - Privately-Owned	Available	Not Used in Prior Housing Element			2	2
EL MONTE CA	11460 RAMONA BLVD		8567024006	DV	GC	C-3	0	25	0.13	Commercial	YES - Current	NO - Privately-Owned	Available	Not Used in Prior Housing Element			2	2
EL MONTE CA	11400 RAMONA BLVD		8567024028	DV	GC	C-3	0	25	0.21	Commercial	YES - Current	NO - Privately-Owned	Available	Not Used in Prior Housing Element			4	4
EL MONTE CA	11420 RAMONA BLVD		8567024029	DV	GC	C-3	0	25	0.47	Commercial	YES - Current	NO - Privately-Owned	Available	Not Used in Prior Housing Element			8	8
EL MONTE CA	RAMONA BLVD / LEE LN		8567024032	DV	GC	C-3	0	25	0.06	Commercial	YES - Current	NO - Privately-Owned	Available	Not Used in Prior Housing Element			1	1
EL MONTE CA			8567024033	DV	GC	C-3	0	25	0.19	Commercial	YES - Current	NO - Privately-Owned	Available	Not Used in Prior Housing Element			3	3
EL MONTE CA	11464 RAMONA BLVD		8567025020	DW	GC	C-3	0	25	0.17	Commercial	YES - Current	NO - Privately-Owned	Available	Not Used in Prior Housing Element			3	3
EL MONTE CA	11512 RAMONA BLVD		8567025021	DW	GC	C-3	0	25	0.32	Commercial	YES - Current	NO - Privately-Owned	Available	Not Used in Prior Housing Element			6	6
EL MONTE CA	RAMONA BLVD / N PECK RD		8567025022	DW	GC	C-3	0	25	0.14	Commercial	YES - Current	NO - Privately-Owned	Available	Not Used in Prior Housing Element			2	2
EL MONTE CA	11448 LEE LN		8567023024		GC	C-3	0	25	0.20	Vacant	YES - Planned	NO - Privately-Owned	Pending	Not Used in Prior Housing Element			5	5
EL MONTE CA	10024 VALLEY BLVD	91731-1702	8578008004		GC	C-3	0	25	1.08	Commercial	YES - Planned	NO - Privately-Owned	Pending	Not Used in Prior Housing Element	93			93
EL MONTE CA	10038 VALLEY BLVD	91731-1702	8578008005		GC	C-3	0	25	0.66	Commercial	YES - Planned	NO - Privately-Owned	Pending	Not Used in Prior Housing Element	40			40
EL MONTE CA	RAMONA BLVD / SANTA ANITA AVE		8578018913	F	SP	GSP	0	36	5.58	Miscellaneous	YES - Current	NO - Privately-Owned	Available	Used in Prior Housing Element - Non-Vacant			141	141
EL MONTE CA	RAMONA BLVD / SANTA ANITA AVE		8578019901	F	SP	GSP	0	36	0.94	Government	YES - Current	YES - County-Owned	Available	Used in Prior Housing Element - Non-Vacant			34	34
EL MONTE CA	333 S HOYT PARK PL	91731	8578019902	F	SP	GSP	0	36	4.31	Government	YES - Current	YES - County-Owned	Available	Used in Prior Housing Element - Non-Vacant	54		92	146
EL MONTE CA	RAMONA BLVD / SANTA ANITA AVE		8578019903	F	SP	GSP	0	36	0.85	Government	YES - Current	YES - County-Owned	Available	Used in Prior Housing Element - Non-Vacant			21	21
EL MONTE CA	RAMONA BLVD / SANTA ANITA AVE		8578020907	F	SP	GSP	0	36	0.85	Government	YES - Current	YES - County-Owned	Available	Not Used in Prior Housing Element			21	21
EL MONTE CA	SAN BERNARDINO FWY / SANTA ANITA AVE		8578020908	F	SP	GSP	0	36	7.32	Government	YES - Current	YES - County-Owned	Available	Not Used in Prior Housing Element	60		125	185
EL MONTE CA	RAMONA BLVD / SANTA ANITA AVE		8578020910	F	SP	GSP	0	36	7.26	Government	YES - Current	YES - State-Owned	Available	Not Used in Prior Housing Element	60		123	183
EL MONTE CA	SANTA FE DR / SANTA ANITA AVE		8578022002		SP	GSP	0	36	1.58	Vacant	YES - Current	NO - Privately-Owned	Available	Used in Prior Housing Element - Non-Vacant			250	250
EL MONTE CA	SANTA FE DR / SANTA ANITA AVE		8578022004		SP	GSP	0	36	2.43		YES - Planned	NO - Privately-Owned	Pending	Used in Prior Housing Element - Non-Vacant	175		33	208
EL MONTE CA	4827 PECK RD	91732-1301	8538009005	BV	MMU	MMU	25	35	0.67	Commercial	YES - Current	NO - Privately-Owned	Available	Not Used in Prior Housing Element			16	16
EL MONTE CA	11581 LOWER AZUSA RD	91732-1332	8538009006	BV	MMU	MMU	25	35	0.67	Commercial	YES - Current	NO - Privately-Owned	Available	Not Used in Prior Housing Element			16	16
EL MONTE CA	4801 PECK RD	91732-1301	8538009007	BV	MMU	MMU	25	35	0.56	Commercial	YES - Current	NO - Privately-Owned	Available	Not Used in Prior Housing Element			14	14
EL MONTE CA	4572 PECK RD	91732-1959	8547006009	BP	MMU	MMU	25	25	0.14	Commercial	YES - Current	NO - Privately-Owned	Available	Not Used in Prior Housing Element			2	2
EL MONTE CA	11608 MULHALL ST	91732-1304	8547006010	BP	MMU	MMU	25	25	0.28	Residential	YES - Current	NO - Privately-Owned	Available	Not Used in Prior Housing Element			3	3
EL MONTE CA	4564 PECK RD	91732-1933	8547006011	BP	MMU	MMU	25	25	0.55	Commercial	YES - Current	NO - Privately-Owned	Available	Not Used in Prior Housing Element			10	10
EL MONTE CA	11613 EMERY ST	91732-1901	8547006013	BO	MMU	MMU	25	25	0.44	Recreational	YES - Current	NO - Privately-Owned	Available	Not Used in Prior Housing Element			8	8
EL MONTE CA	4550 PECK RD	91732-1959	8547006900	BO	MMU	MMU	25	25	1.12	Government	YES - Current	YES - County-Owned	Available	Not Used in Prior Housing Element			20	20
EL MONTE CA	4802 PECK RD	91732-1302	8547013031		MMU	MMU	25	35	3.21	Commercial	YES - Current	NO - Privately-Owned	Available	Not Used in Prior Housing Element			78	78
EL MONTE CA	4724 PECK RD	91732-1310	8547014012	BS	MMU	MMU	25	35	0.69	Commercial	YES - Current	NO - Privately-Owned	Available	Not Used in Prior Housing Element			17	17
EL MONTE CA	4732 PECK RD	91732-1310	8547014013	BS	MMU	MMU	25	35	0.69	Commercial	YES - Current	NO - Privately-Owned	Available	Not Used in Prior Housing Element			17	17
EL MONTE CA	11625 RANCHITO ST	91732-1315	8547014018	BR	MMU	MMU	25	25	0.16	Residential	YES - Current	NO - Privately-Owned	Available	Used in Prior Housing Element - Non-Vacant			2	2
EL MONTE CA	11619 RANCHITO ST	91732-1315	8547014019	BR	MMU	MMU	25	25	0.18	Residential	YES - Current	NO - Privately-Owned	Available	Used in Prior Housing Element - Non-Vacant			2	2
EL MONTE CA	4508 PECK RD	91732-1910	8547018091	BN	MMU	MMU	25	25	0.38	Commercial	YES - Current	NO - Privately-Owned	Available	Not Used in Prior Housing Element			7	7
EL MONTE CA	4504 PECK RD	91732-1910	8547018092	BN	MMU	MMU	25	25	0.19	Commercial	YES - Current	NO - Privately-Owned	Available	Not Used in Prior Housing Element			1	1
EL MONTE CA	11615 KILLIAN ST	91732-1921	8547018093	BN	MMU	MMU	25	25	0.10	Residential	YES - Current	NO - Privately-Owned	Available	Not Used in Prior Housing Element			1	1
EL MONTE CA	11621 KILLIAN ST	91732-1921	8547018094	BN	MMU	MMU	25	25	0.10	Residential	YES - Current	NO - Privately-Owned	Available	Not Used in Prior Housing Element			1	1
EL MONTE CA	11610 RANCHITO ST	91732-1316	8547024002	BQ	MMU	MMU	25	25	0.15	Residential	YES - Current	NO - Privately-Owned	Available	Not Used in Prior Housing Element			2	2
EL MONTE CA	4632 PECK RD	91732-1308	8547024046	BQ	MMU	MMU	25	25	0.38	Recreational	YES - Current	NO - Privately-Owned	Available	Not Used in Prior Housing Element			7	7

Jurisdiction Name	Site Address/Intersection	5 Digit ZIP Code	Assessor Parcel Number	Consolidated Sites	General Plan Designation (Current)	Zoning Designation (Current)	Minimum Density Allowed (units/acre)	Max Density Allowed (units/acre)	Parcel Size (Acres)	Existing Use/Vacancy	Infrastructure	Publicly-Owned	Site Status	Identified in Last/Last Two Planning Cycle(s)	Lower Income Capacity	Moderate Income Capacity	Above Moderate Income Capacity	Total Capacity
EL MONTE CA	4632 PECK RD	91732-1308	8547024048	BQ	MMU	MMU	25	25	0.14	Recreational	YES - Current	NO - Privately-Owned	Available	Not Used in Prior Housing Element			2	2
EL MONTE CA	11608 KILLIAN ST	91732-1922	8548001001	BM	MMU	MMU	25	25	0.33	Commercial	YES - Current	NO - Privately-Owned	Available	Not Used in Prior Housing Element			4	4
EL MONTE CA	4428 PECK RD	91732-1908	8548001002	BM	MMU	MMU	25	25	0.40	Commercial	YES - Current	NO - Privately-Owned	Available	Not Used in Prior Housing Element			7	7
EL MONTE CA	4402 PECK RD	91732-1908	8548001006	BL	MMU	MMU	25	35	0.33	Commercial	YES - Current	NO - Privately-Owned	Available	Not Used in Prior Housing Element			8	8
EL MONTE CA	4378 PECK RD	91732-1906	8548001007	BL	MMU	MMU	25	35	0.33	Commercial	YES - Current	NO - Privately-Owned	Available	Not Used in Prior Housing Element			7	7
EL MONTE CA	4372 PECK RD	91732-1906	8548001008	BL	MMU	MMU	25	35	0.33	Residential	YES - Current	NO - Privately-Owned	Available	Not Used in Prior Housing Element			7	7
EL MONTE CA	4356 PECK RD	91732-1906	8548001010	BK	MMU	MMU	25	35	0.23	Commercial	YES - Current	NO - Privately-Owned	Available	Not Used in Prior Housing Element			6	6
EL MONTE CA	4352 PECK RD	91732-1906	8548001011	BK	MMU	MMU	25	35	0.33	Residential	YES - Current	NO - Privately-Owned	Available	Not Used in Prior Housing Element			7	7
EL MONTE CA	4342 PECK RD	91732-1906	8548001012	BK	MMU	MMU	25	35	0.33	Commercial	YES - Current	NO - Privately-Owned	Available	Not Used in Prior Housing Element			8	8
EL MONTE CA	4336 PECK RD	91732-1906	8548001013	BK	MMU	MMU	25	35	0.33	Residential	YES - Current	NO - Privately-Owned	Available	Not Used in Prior Housing Element			7	7
EL MONTE CA	4355 FANDON AVE	91732-1917	8548001030	BK	MMU	MMU	25	35	0.33	Residential	YES - Current	NO - Privately-Owned	Available	Not Used in Prior Housing Element			7	7
EL MONTE CA	4264 PECK RD	91732-2114	8548012001	BJ	MMU	MMU	25	35	0.34	Commercial	YES - Current	NO - Privately-Owned	Available	Not Used in Prior Housing Element			8	8
EL MONTE CA	4254 PECK RD	91732-2114	8548012002	BJ	MMU	MMU	25	35	0.45	Commercial	YES - Current	NO - Privately-Owned	Available	Not Used in Prior Housing Element			9	9
EL MONTE CA	4246 PECK RD	91732-2114	8548012003	BJ	MMU	MMU	25	35	0.45	Residential	YES - Current	NO - Privately-Owned	Available	Not Used in Prior Housing Element			10	10
EL MONTE CA	4014 PECK RD	91732-2245	8548017028		MMU	MMU	25	25	0.23	Commercial	YES - Current	NO - Privately-Owned	Available	Not Used in Prior Housing Element			4	4
EL MONTE CA	4027 PECK RD	91732-2246	8568018004	CE	MMU	MMU	25	35	0.20	Residential	YES - Current	NO - Privately-Owned	Available	Not Used in Prior Housing Element			4	4
EL MONTE CA	4021 PECK RD	91732-2246	8568018005	CE	MMU	MMU	25	35	0.22	Residential	YES - Current	NO - Privately-Owned	Available	Not Used in Prior Housing Element			5	5
EL MONTE CA	4011 PECK RD	91732-2246	8568018006	CE	MMU	MMU	25	35	0.15	Residential	YES - Current	NO - Privately-Owned	Available	Not Used in Prior Housing Element			3	3
EL MONTE CA	4007 PECK RD	91732-2246	8568018007	CE	MMU	MMU	25	35	0.16	Residential	YES - Current	NO - Privately-Owned	Available	Not Used in Prior Housing Element			3	3
EL MONTE CA	4001 PECK RD	91732-2246	8568018008	CE	MMU	MMU	25	35	0.16	Residential	YES - Current	NO - Privately-Owned	Available	Not Used in Prior Housing Element			3	3
EL MONTE CA	3939 PECK RD	91732-2244	8568018009	CE	MMU	MMU	25	35	0.14	Residential	YES - Current	NO - Privately-Owned	Available	Not Used in Prior Housing Element			3	3
EL MONTE CA	4031 PECK RD	91732-2246	8568018015	CE	MMU	MMU	25	35	0.21	Commercial	YES - Current	NO - Privately-Owned	Available	Not Used in Prior Housing Element			5	5
EL MONTE CA	3931 PECK RD	91732-2296	8568019011	CF	MMU	MMU	25	25	0.11	Commercial	YES - Current	NO - Privately-Owned	Available	Not Used in Prior Housing Element			2	2
EL MONTE CA	3933 PECK RD	91732-2244	8568019012	CF	MMU	MMU	25	25	0.20	Residential	YES - Current	NO - Privately-Owned	Available	Not Used in Prior Housing Element			2	2
EL MONTE CA	3937 PECK RD	91732-2244	8568019013	CE	MMU	MMU	25	35	0.37	Commercial	YES - Current	NO - Privately-Owned	Available	Not Used in Prior Housing Element			9	9
EL MONTE CA	3825 PECK RD	91732-2231	8568020005	CG	MMU	MMU	25	25	0.38	Commercial	YES - Current	NO - Privately-Owned	Available	Not Used in Prior Housing Element			6	6
EL MONTE CA	3819 PECK RD	91732-2242	8568020006	CG	MMU	MMU	25	25	0.29	Commercial	YES - Current	NO - Privately-Owned	Available	Not Used in Prior Housing Element			4	4
EL MONTE CA	11553 MEDINA CT	91731-2113	8568020013	CG	MMU	MMU	25	25	0.18	Residential	YES - Current	NO - Privately-Owned	Available	Not Used in Prior Housing Element			2	2
EL MONTE CA	11547 MEDINA CT	91731-2113	8568020014	CG	MMU	MMU	25	25	0.19	Residential	YES - Current	NO - Privately-Owned	Available	Not Used in Prior Housing Element			3	3
EL MONTE CA	11543 MEDINA CT	91731-2113	8568020015	CG	MMU	MMU	25	25	0.19	Residential	YES - Current	NO - Privately-Owned	Available	Not Used in Prior Housing Element			3	3
EL MONTE CA	11537 MEDINA CT	91731-2113	8568020016	CG	MMU	MMU	25	25	0.18	Residential	YES - Current	NO - Privately-Owned	Available	Not Used in Prior Housing Element			2	2
EL MONTE CA	11555 MEDINA CT	91731-2113	8568020900	CG	MMU	MMU	25	25	0.20	Commercial	YES - Current	NO - Privately-Owned	Available	Not Used in Prior Housing Element			3	3
EL MONTE CA	4249 PECK RD	91732-2113	8569001034	CA	MMU	MMU	25	35	0.90	Recreational	YES - Current	NO - Privately-Owned	Available	Not Used in Prior Housing Element			22	22
EL MONTE CA	4239 PECK RD	91732-2113	8569001036	CA	MMU	MMU	25	35	0.22	Commercial	YES - Current	NO - Privately-Owned	Available	Not Used in Prior Housing Element			5	5
EL MONTE CA	4233 PECK RD	91732-2113	8569001037	CA	MMU	MMU	25	35	0.22	Commercial	YES - Current	NO - Privately-Owned	Available	Not Used in Prior Housing Element			5	5
EL MONTE CA	4203 PECK RD	91732-2113	8569002003	CB	MMU	MMU	25	25	0.36	Commercial	YES - Current	NO - Privately-Owned	Available	Not Used in Prior Housing Element			6	6
EL MONTE CA	11541 BASYE ST	91732-2130	8569002004	CB	MMU	MMU	25	25	0.12	Residential	YES - Current	NO - Privately-Owned	Available	Not Used in Prior Housing Element			1	1
EL MONTE CA	11535 BASYE ST	91732-2130	8569002005	CB	MMU	MMU	25	25	0.12	Residential	YES - Current	NO - Privately-Owned	Available	Not Used in Prior Housing Element			1	1
EL MONTE CA	11529 BASYE ST	91732-2130	8569002006	CB	MMU	MMU	25	25	0.18	Residential	YES - Current	NO - Privately-Owned	Available	Not Used in Prior Housing Element			2	2
EL MONTE CA	11542 BASYE ST	91732-2131	8569004022	CC	MMU	MMU	25	35	0.24	Residential	YES - Current	NO - Privately-Owned	Available	Used in Prior Housing Element - Non-Vacant			4	4
EL MONTE CA	4157 PECK RD	91732-2249	8569004023	CC	MMU	MMU	25	35	0.29	Residential	YES - Current	NO - Privately-Owned	Available	Used in Prior Housing Element - Non-Vacant			6	6
EL MONTE CA	4151 PECK RD	91732-2249	8569004024	CC	MMU	MMU	25	35	0.30	Residential	YES - Current	NO - Privately-Owned	Available	Used in Prior Housing Element - Non-Vacant			7	7
EL MONTE CA	4141 PECK RD	91732-2249	8569004025	CC	MMU	MMU	25	35	0.29	Residential	YES - Current	NO - Privately-Owned	Available	Used in Prior Housing Element - Non-Vacant			5	5
EL MONTE CA	4137 PECK RD	91732-2249	8569004041	CC	MMU	MMU	25	35	0.29	Commercial	YES - Current	NO - Privately-Owned	Available	Not Used in Prior Housing Element			6	6
EL MONTE CA	4131 PECK RD	91732-2249	8569004042	CD	MMU	MMU	25	25	0.29	Vacant	YES - Planned	NO - Privately-Owned	Pending	Not Used in Prior Housing Element			7	7
EL MONTE CA	4123 PECK RD	91732-2249	8569004043	CD	MMU	MMU	25	25	0.29	Vacant	YES - Planned	NO - Privately-Owned	Pending	Not Used in Prior Housing Element			7	7
EL MONTE CA	11512 MCGIRK AVE	91732-1825	8569021029	BY	MMU	MMU	25	35	0.06	Residential	YES - Current	NO - Privately-Owned	Available	Not Used in Prior Housing Element			1	1
EL MONTE CA	4367 PECK RD	91732-1905	8569021030	BY	MMU	MMU	25	35	0.26	Commercial	YES - Current	NO - Privately-Owned	Available	Not Used in Prior Housing Element			6	6
EL MONTE CA	4361 PECK RD	91732-1905	8569021031	BY	MMU	MMU	25	35	0.22	Commercial	YES - Current	NO - Privately-Owned	Available	Not Used in Prior Housing Element			5	5
EL MONTE CA	4358 ELROVIA AVE	91732-1809	8569021032	BY	MMU	MMU	25	35	0.24	Residential	YES - Current	NO - Privately-Owned	Available	Not Used in Prior Housing Element			5	5
EL MONTE CA	4352 ELROVIA AVE	91732-1809	8569021033	BY	MMU	MMU	25	35	0.23	Residential	YES - Current	NO - Privately-Owned	Available	Not Used in Prior Housing Element			4	4
EL MONTE CA	4355 PECK RD	91732-1905	8569021034	BY	MMU	MMU	25	35	0.21	Commercial	YES - Current	NO - Privately-Owned	Available	Not Used in Prior Housing Element			5	5
EL MONTE CA	4347 PECK RD	91732-1905	8569021035	BY	MMU	MMU	25	35	0.47	Residential	YES - Current	NO - Privately-Owned	Available	Not Used in Prior Housing Element			9	9
EL MONTE CA	4301 PECK RD	91732-1905	8569021046	BZ	MMU	MMU	25	35	0.18	Commercial	YES - Current	NO - Privately-Owned	Available	Not Used in Prior Housing Element			4	4
EL MONTE CA	4309 PECK RD	91732-1905	8569021047	BZ	MMU	MMU	25	35	0.18	Commercial	YES - Current	NO - Privately-Owned	Available	Not Used in Prior Housing Element			4	4
EL MONTE CA	LAMBERT AVE / N PECK RD		8569021048	BZ	MMU	MMU	25	35	0.08	Commercial	YES - Current	NO - Privately-Owned	Available	Not Used in Prior Housing Element			2	2
EL MONTE CA	4315 PECK RD	91732-1905	8569021049	BZ	MMU	MMU	25	35	0.10	Commercial	YES - Current	NO - Privately-Owned	Available	Not Used in Prior Housing Element			3	3
EL MONTE CA	4323 PECK RD	91732-1905	8569021050	BZ	MMU	MMU	25	35	0.13	Commercial	YES - Current	NO - Privately-Owned	Available	Not Used in Prior Housing Element			2	2
EL MONTE CA	LAMBERT AVE / N PECK RD		8569021051	BZ	MMU	MMU	25	35	0.05	Commercial	YES - Current	NO - Privately-Owned	Available	Not Used in Prior Housing Element			1	1
EL MONTE CA	4327 PECK RD	91732-1905	8569021052	BZ	MMU	MMU	25	35	0.10	Commercial	YES - Current	NO - Privately-Owned	Available	Not Used in Prior Housing Element			2	2
EL MONTE CA	4333 PECK RD	91732-1905	8569021053	BZ	MMU	MMU	25	35	0.16	Commercial	YES - Current	NO - Privately-Owned	Available	Not Used in Prior Housing Element			4	4
EL MONTE CA	4335 PECK RD	91732-1905	8569021054	BZ	MMU	MMU	25	35	0.23	Commercial	YES - Current	NO - Privately-Owned	Available	Not Used in Prior Housing Element			6	6
EL MONTE CA	MC GIRK AVE / N PECK RD		8569021056	BZ	MMU	MMU	25	35	0.02	Commercial	YES - Current	NO - Privately-Owned	Available	Not Used in Prior Housing Element			1	1
EL MONTE CA	11512 MCGIRK AVE	91732-1825	8569021057	BY	MMU	MMU	25	35	0.15	Residential	YES - Current	NO - Privately-Owned	Available	Not Used in Prior Housing Element			3	3
EL MONTE CA	11518 MCGIRK AVE	91732-1825	8569021058	BY	MMU	MMU	25	35	0.09	Residential	YES - Current	NO - Privately-Owned	Available	Not Used in Prior Housing Element			1	1
EL MONTE CA	4375 PECK RD	91732-1905	8569021059	BY	MMU	MMU	25	35	0.15	Commercial	YES - Current	NO - Privately-Owned	Available	Not Used in Prior Housing Element			4	4
EL MONTE CA	4381 PECK RD	91732-1905	8569021060	BY	MMU	MMU	25	35	0.07	Commercial	YES - Current	NO - Privately-Owned	Available	Not Used in Prior Housing Element			2	2
EL MONTE CA	11555 RANCHITO ST	91732-1338	8570026001	BW	MMU	MMU	25	35	0.46	Commercial	YES - Current	NO - Privately-Owned	Available	Not Used in Prior Housing Element			11	11
EL MONTE CA	4715 PECK RD	91732-1309	8570026002	BW	MMU	MMU	25	35	0.53	Commercial	YES - Current	NO - Privately-Owned	Available	Not Used in Prior Housing Element			7	7
EL MONTE CA	4725 PECK RD	91732-1309	8570026003	BW	MMU	MMU	25	35	0.53	Commercial	YES - Current	NO - Privately-Owned	Available	Not Used in Prior Housing Element			12	12
EL MONTE CA	4735 PECK RD	91732-1309	8570026004	BW	MMU	MMU	25	35	0.52	Institutional	YES - Current	NO - Privately-Owned	Available	Not Used in Prior Housing Element			13	13
EL MONTE CA	11539 RANCHITO ST	91732-1338	8570026022	BW	MMU	MMU	25	35	0.32	Residential	YES - Current	NO - Privately-Owned	Available	Not Used in Prior Housing Element			8	8
EL MONTE CA	11545 RANCHITO ST	91732-1338	8570026025	BW	MMU	MMU	25	35	0.28	Institutional	YES - Current	NO - Privately-Owned	Available	Not Used in Prior Housing Element			7	7
EL MONTE CA	11531 MULHALL ST	91732-1830	8570027007	BX	MMU	MMU	25	35	0.16	Residential	YES - Current	NO - Privately-Owned	Available	Not Used in Prior Housing Element			3	3
EL MONTE CA	11537 MULHALL ST	91732-1830	8570027008	BX	MMU	MMU	25	35	0.16	Residential	YES - Current	NO - Privately-Owned	Available	Not Used in Prior Housing Element			3	3
EL MONTE CA	4625 PECK RD	91732-1307	8570027009	BX</														

Jurisdiction Name	Site Address/Intersection	5 Digit ZIP Code	Assessor Parcel Number	Consolidated Sites	General Plan Designation (Current)	Zoning Designation (Current)	Minimum Density Allowed (units/acre)	Max Density Allowed (units/acre)	Parcel Size (Acres)	Existing Use/Vacancy	Infrastructure	Publicly-Owned	Site Status	Identified in Last/Last Two Planning Cycle(s)	Lower Income Capacity	Moderate Income Capacity	Above Moderate Income Capacity	Total Capacity
EL MONTE CA	2635 DURFEE AVE	91732-3413	8106015004	DJ	MMU	MMU	25	35	0.48	Industrial	YES - Current	NO - Privately-Owned	Available	Used in Prior Housing Element - Non-Vacant			12	12
EL MONTE CA	2647 DURFEE AVE	91732-3413	8106015005	DJ	MMU	MMU	25	35	0.49	Industrial	YES - Current	NO - Privately-Owned	Available	Used in Prior Housing Element - Non-Vacant			12	12
EL MONTE CA	2653 DURFEE AVE	91732-3413	8106015006	DJ	MMU	MMU	25	35	0.48	Industrial	YES - Current	NO - Privately-Owned	Available	Used in Prior Housing Element - Non-Vacant			12	12
EL MONTE CA	12247 ELLIOTT AVE	91732-3730	8106015029	DJ	MMU	MMU	25	35	2.12	Commercial	YES - Current	NO - Privately-Owned	Available	Used in Prior Housing Element - Non-Vacant			51	51
EL MONTE CA	2243 DURFEE AVE	91732-3901	8107016005	DM	MMU	MMU	25	35	0.32	Industrial	YES - Current	NO - Privately-Owned	Available	Used in Prior Housing Element - Non-Vacant			8	8
EL MONTE CA	2253 DURFEE AVE	91732-3901	8107016008	DM	MMU	MMU	25	35	1.03	Industrial	YES - Current	NO - Privately-Owned	Available	Used in Prior Housing Element - Non-Vacant			25	25
EL MONTE CA	2247 DURFEE AVE	91732-3901	8107016009	DM	MMU	MMU	25	35	0.32	Industrial	YES - Current	NO - Privately-Owned	Available	Used in Prior Housing Element - Non-Vacant			8	8
EL MONTE CA	2307 DURFEE AVE	91732-3903	8107017009	DM	MMU	MMU	25	35	0.32	Commercial	YES - Current	NO - Privately-Owned	Available	Used in Prior Housing Element - Non-Vacant			8	8
EL MONTE CA	2435 DURFEE AVE	91732-3711	8107018001	DL	MMU	MMU	25	25	0.30	Commercial	YES - Planned	NO - Privately-Owned	Pending	Used in Prior Housing Element - Non-Vacant			7	7
EL MONTE CA	2427 DURFEE AVE	91732-3707	8107018002	DL	MMU	MMU	25	25	0.31	Industrial	YES - Planned	NO - Privately-Owned	Pending	Used in Prior Housing Element - Non-Vacant			8	8
EL MONTE CA	2421 DURFEE AVE	91732-3707	8107018003	DL	MMU	MMU	25	25	0.31	Residential	YES - Planned	NO - Privately-Owned	Pending	Used in Prior Housing Element - Non-Vacant			8	8
EL MONTE CA	2457 DURFEE AVE	91732-3746	8107019005	DK	MMU	MMU	25	25	0.31	Residential	YES - Current	NO - Privately-Owned	Available	Used in Prior Housing Element - Non-Vacant			5	5
EL MONTE CA	2449 DURFEE AVE	91732-3746	8107019006	DK	MMU	MMU	25	25	0.34	Commercial	YES - Current	NO - Privately-Owned	Available	Used in Prior Housing Element - Non-Vacant			6	6
EL MONTE CA	2536 DURFEE AVE	91732-3709	8108008004	DC	MMU	MMU	25	25	0.37	Industrial	YES - Current	NO - Privately-Owned	Available	Used in Prior Housing Element - Non-Vacant			6	6
EL MONTE CA	2528 DURFEE AVE	91732-3712	8108008005	DC	MMU	MMU	25	25	0.39	Commercial	YES - Current	NO - Privately-Owned	Available	Used in Prior Housing Element - Non-Vacant			7	7
EL MONTE CA	2446 DURFEE AVE	91732-3708	8108012002	DB	MMU	MMU	25	25	0.40	Commercial	YES - Current	NO - Privately-Owned	Available	Used in Prior Housing Element - Non-Vacant			6	6
EL MONTE CA	2440 DURFEE AVE	91732-3708	8108012003	DA	MMU	MMU	25	25	0.40	Commercial	YES - Current	NO - Privately-Owned	Available	Used in Prior Housing Element - Non-Vacant			7	7
EL MONTE CA	2432 DURFEE AVE	91732-3708	8108012004	DA	MMU	MMU	25	25	0.33	Commercial	YES - Current	NO - Privately-Owned	Available	Used in Prior Housing Element - Non-Vacant			6	6
EL MONTE CA	12323 KLINGERMANN ST	91732-3933	8108012009	CZ	MMU	MMU	25	25	0.09	Residential	YES - Current	NO - Privately-Owned	Available	Used in Prior Housing Element - Non-Vacant			1	1
EL MONTE CA	2406 DURFEE AVE	91732-3708	8108012011	CZ	MMU	MMU	25	25	0.46	Commercial	YES - Current	NO - Privately-Owned	Available	Used in Prior Housing Element - Non-Vacant			7	7
EL MONTE CA	12321 KLINGERMANN ST	91732-3933	8108012012	CZ	MMU	MMU	25	25	0.26	Industrial	YES - Current	NO - Privately-Owned	Available	Used in Prior Housing Element - Non-Vacant			5	5
EL MONTE CA	2458 DURFEE AVE	91732-3708	8108012013	DB	MMU	MMU	25	25	0.27	Industrial	YES - Current	NO - Privately-Owned	Available	Used in Prior Housing Element - Non-Vacant			5	5
EL MONTE CA	12322 FELIPE ST	91732-3656	8108012014	DB	MMU	MMU	25	25	0.13	Residential	YES - Current	NO - Privately-Owned	Available	Used in Prior Housing Element - Non-Vacant			2	2
EL MONTE CA	2258 DURFEE AVE	91732-3902	8108013010	CY	MMU	MMU	25	25	0.29	Residential	YES - Current	NO - Privately-Owned	Available	Used in Prior Housing Element - Non-Vacant			4	4
EL MONTE CA	2252 DURFEE AVE	91732-3902	8108013011	CY	MMU	MMU	25	25	0.30	Industrial	YES - Current	NO - Privately-Owned	Available	Used in Prior Housing Element - Non-Vacant			5	5
EL MONTE CA	2246 DURFEE AVE	91732-3902	8108013012	CX	MMU	MMU	25	25	0.29	Vacant	YES - Current	NO - Privately-Owned	Available	Used in Prior Housing Element - Non-Vacant			4	4
EL MONTE CA	2238 DURFEE AVE	91732-3902	8108013013	CX	MMU	MMU	25	25	0.30	Vacant	YES - Current	NO - Privately-Owned	Available	Used in Prior Housing Element - Non-Vacant			4	4
EL MONTE CA	2232 DURFEE AVE	91732-3902	8108013014	CX	MMU	MMU	25	25	0.30	Vacant	YES - Current	NO - Privately-Owned	Available	Used in Prior Housing Element - Non-Vacant			3	3
EL MONTE CA	2226 DURFEE AVE	91732-3902	8108013015	CW	MMU	MMU	25	25	0.30	Industrial	YES - Current	NO - Privately-Owned	Available	Used in Prior Housing Element - Non-Vacant			5	5
EL MONTE CA	2218 DURFEE AVE	91732-3902	8108013016	CW	MMU	MMU	25	25	0.30	Industrial	YES - Current	NO - Privately-Owned	Available	Used in Prior Housing Element - Non-Vacant			5	5
EL MONTE CA	2210 DURFEE AVE	91732-3902	8108013017	CW	MMU	MMU	25	25	0.29	Commercial	YES - Current	NO - Privately-Owned	Available	Used in Prior Housing Element - Non-Vacant			5	5
EL MONTE CA	2616 DURFEE AVE	91732-3414	8109001008	DD	MMU	MMU	25	35	0.52	Commercial	YES - Current	NO - Privately-Owned	Available	Used in Prior Housing Element - Non-Vacant			13	13
EL MONTE CA	2606 DURFEE AVE	91732-3414	8109001009	DD	MMU	MMU	25	35	0.15	Industrial	YES - Current	NO - Privately-Owned	Available	Used in Prior Housing Element - Non-Vacant			4	4
EL MONTE CA	2600 DURFEE AVE	91732-3414	8109001010	DD	MMU	MMU	25	35	0.15	Commercial	YES - Current	NO - Privately-Owned	Available	Used in Prior Housing Element - Non-Vacant			4	4
EL MONTE CA	12317 ELLIOTT AVE	91732-3647	8109001011	DD	MMU	MMU	25	35	0.24	Residential	YES - Current	NO - Privately-Owned	Available	Used in Prior Housing Element - Non-Vacant			5	5
EL MONTE CA	2728 DURFEE AVE	91732-3416	8109006005	DE	MMU	MMU	25	25	0.29	Residential	YES - Current	NO - Privately-Owned	Available	Used in Prior Housing Element - Non-Vacant			5	5
EL MONTE CA	2724 DURFEE AVE	91732-3416	8109006006	DE	MMU	MMU	25	25	0.28	Commercial	YES - Current	NO - Privately-Owned	Available	Used in Prior Housing Element - Non-Vacant			4	4
EL MONTE CA	2720 DURFEE AVE	91732-3416	8109006007	DE	MMU	MMU	25	25	0.28	Commercial	YES - Current	NO - Privately-Owned	Available	Used in Prior Housing Element - Non-Vacant			5	5
EL MONTE CA	2124 DURFEE AVE	91733-3715	8113030033	CU	MMU	MMU	25	35	0.62	Industrial	YES - Current	NO - Privately-Owned	Available	Used in Prior Housing Element - Non-Vacant			15	15
EL MONTE CA	2134 DURFEE AVE	91733-3715	8113030034	CU	MMU	MMU	25	35	0.62	Industrial	YES - Current	NO - Privately-Owned	Available	Used in Prior Housing Element - Non-Vacant			15	15
EL MONTE CA	2140 DURFEE AVE	91733-3715	8113030035	CV	MMU	MMU	25	35	0.62	Commercial	YES - Current	NO - Privately-Owned	Available	Used in Prior Housing Element - Non-Vacant			15	15
EL MONTE CA	2146 DURFEE AVE	91733-3715	8113030036	CV	MMU	MMU	25	35	0.62	Residential	YES - Current	NO - Privately-Owned	Available	Used in Prior Housing Element - Non-Vacant			3	3
EL MONTE CA	4428 PECK RD	91732-1908	8548001002	CL	OC	O-C	0	25	0.40	Commercial	YES - Current	NO - Privately-Owned	Available	Not Used in Prior Housing Element			7	7
EL MONTE CA	4424 PECK RD	91732-1908	8548001003	CL	OC	O-C	0	25	0.26	Commercial	YES - Current	NO - Privately-Owned	Available	Not Used in Prior Housing Element			1	1
EL MONTE CA	4435 FANDON AVE	91732-1919	8548001023	CM	OC	O-C	0	25	0.18	Residential	YES - Current	NO - Privately-Owned	Available	Not Used in Prior Housing Element			2	2
EL MONTE CA	4411 FANDON AVE	91732-1919	8548001027	CM	OC	O-C	0	25	0.33	Residential	YES - Current	NO - Privately-Owned	Available	Not Used in Prior Housing Element			5	5
EL MONTE CA	11623 LAMBERT AVE	91732-1913	8548001037	CM	OC	O-C	0	25	0.19	Residential	YES - Current	NO - Privately-Owned	Available	Not Used in Prior Housing Element			3	3
EL MONTE CA	12316 RAMONA BLVD	91732-2540	8549001004	CS	OC	O-C	0	25	0.13	Commercial	YES - Current	NO - Privately-Owned	Available	Not Used in Prior Housing Element			2	2
EL MONTE CA	12322 RAMONA BLVD	91732-2540	8549001005	CS	OC	O-C	0	25	0.14	Residential	YES - Current	NO - Privately-Owned	Available	Not Used in Prior Housing Element			3	3
EL MONTE CA	12346 RAMONA BLVD	91732-2540	8549001009	CT	OC	O-C	0	25	0.19	Commercial	YES - Current	NO - Privately-Owned	Available	Not Used in Prior Housing Element			3	3
EL MONTE CA	4227 GILMAN RD	91732-2519	8549001013	CT	OC	O-C	0	25	0.18	Residential	YES - Current	NO - Privately-Owned	Available	Not Used in Prior Housing Element			2	2
EL MONTE CA	4221 GILMAN RD	91732-2519	8549001014	CT	OC	O-C	0	25	0.16	Residential	YES - Current	NO - Privately-Owned	Available	Not Used in Prior Housing Element			2	2
EL MONTE CA	4163 BANNISTER AVE	91732-2501	8549001017	CS	OC	O-C	0	25	0.14	Residential	YES - Current	NO - Privately-Owned	Available	Not Used in Prior Housing Element			2	2
EL MONTE CA	12354 RAMONA BLVD	91732-2540	8549001018	CT	OC	O-C	0	25	0.12	Commercial	YES - Current	NO - Privately-Owned	Available	Not Used in Prior Housing Element			2	2
EL MONTE CA	12356 RAMONA BLVD	91732-2540	8549001019	CT	OC	O-C	0	25	0.17	Commercial	YES - Current	NO - Privately-Owned	Available	Not Used in Prior Housing Element			3	3
EL MONTE CA	12300 RAMONA BLVD	91732-2540	8549001020	OC	O-C	O-C	0	25	0.42	Commercial	YES - Current	NO - Privately-Owned	Available	Not Used in Prior Housing Element			7	7
EL MONTE CA	12366 RAMONA BLVD	91732-2540	8549001024	CT	OC	O-C	0	25	0.16	Commercial	YES - Current	NO - Privately-Owned	Available	Not Used in Prior Housing Element			3	3
EL MONTE CA	12312 RAMONA BLVD	91732-2540	8549001025	CS	OC	O-C	0	25	0.22	Commercial	YES - Current	NO - Privately-Owned	Available	Not Used in Prior Housing Element			3	3
EL MONTE CA	RAMONA BLVD / GILMAN RD		8549001027	CT	OC	O-C	0	25	0.29	Commercial	YES - Current	NO - Privately-Owned	Available	Not Used in Prior Housing Element			5	5
EL MONTE CA	4118 MAXSON RD	91732-2414	8549020014	CQ	OC	O-C	0	25	0.12	Residential	YES - Current	NO - Privately-Owned	Available	Not Used in Prior Housing Element			2	2
EL MONTE CA	4124 MAXSON RD	91732-2414	8549020015	CQ	OC	O-C	0	25	0.28	Residential	YES - Current	NO - Privately-Owned	Available	Not Used in Prior Housing Element			5	5
EL MONTE CA	12208 RAMONA BLVD	91732-2538	8549020016	CQ	OC	O-C	0	25	0.33	Residential	YES - Current	NO - Privately-Owned	Available	Not Used in Prior Housing Element			6	6
EL MONTE CA	12216 RAMONA BLVD	91732-2538	8549020017	CQ	OC	O-C	0	25	0.36	Residential	YES - Current	NO - Privately-Owned	Available	Not Used in Prior Housing Element			6	6
EL MONTE CA	12156 RAMONA BLVD	91732-2430	8549021004	CP	OC	O-C	0	25	0.35	Commercial	YES - Current	NO - Privately-Owned	Available	Not Used in Prior Housing Element			6	6
EL MONTE CA	12166 RAMONA BLVD	91732-2430	8549021016	CP	OC	O-C	0	25	0.22	Commercial	YES - Current	NO - Privately-Owned	Available	Not Used in Prior Housing Element			4	4
EL MONTE CA	MAXSON RD / KERWOOD ST		8549021018	CP	OC	O-C	0	25	0.26	Commercial	YES - Current	NO - Privately-Owned	Available	Not Used in Prior Housing Element			5	5
EL MONTE CA	12124 RAMONA BLVD	91732-2430	8549021019	CO	OC	O-C	0	25	0.37	Commercial	YES - Current	NO - Privately-Owned	Available	Not Used in Prior Housing Element			6	6
EL MONTE CA	12150 RAMONA BLVD	91732-2474	8549021026	CP	OC	O-C	0	25	0.35	Commercial	YES - Current	NO - Privately-Owned	Available	Not Used in Prior Housing Element			6	6
EL MONTE CA	4055 MAXSON RD	91732-2480	8549022019	CR	OC	O-C	0	25	0.21	Residential	YES - Current	NO - Privately-Owned	Available	Not Used in Prior Housing Element			3	3
EL MONTE CA	4063 MAXSON RD	91732-2480	8549022020	CR	OC	O-C	0	25	0.14	Residential	YES - Current	NO - Privately-Owned	Available	Not Used in Prior Housing Element			2	2
EL MONTE CA	4006 PENN MAR AVE	91732-2420	8549022021	CR	OC	O-C	0	25	0.15	Residential	YES - Current	NO - Privately-Owned	Available	Not Used in Prior Housing Element			2	2
EL MONTE CA	4034 PENN MAR AVE	91732-2479	8549022043	CO	OC	O-C	0	25	1.26	Residential	YES - Current	NO - Privately-Owned	Available	Not Used in Prior Housing Element			17	17
EL MONTE CA	4047 PENN MAR AVE	91732-2419	8549036005	CN	OC	O-C	0	25	0.15	Residential	YES - Current	NO - Privately-Owned	Available	Not Used in Prior Housing Element			1	1
EL MONTE CA	4039 PENN MAR AVE	91732-2419	8549036006	CN	OC	O-C	0	25	0.15	Residential	YES - Current	NO - Privately-Owned	Available	Not Used in Prior Housing Element			2	2
EL MONTE CA	4029 PENN MAR AVE	91732-2419	8549036007	CN</														

Jurisdiction Name	Site Address/Intersection	5 Digit ZIP Code	Assessor Parcel Number	Consolidated Sites	General Plan Designation (Current)	Zoning Designation (Current)	Minimum Density Allowed (units/acre)	Max Density Allowed (units/acre)	Parcel Size (Acres)	Existing Use/Vacancy	Infrastructure	Publicly-Owned	Site Status	Identified in Last/Last Two Planning Cycle(s)	Lower Income Capacity	Moderate Income Capacity	Above Moderate Income Capacity	Total Capacity
EL MONTE CA	9661 TELSTAR AVE	91731-3003	8581001115		OP	OP	0	14	2.55	Industrial	YES - Current	NO - Privately-Owned	Available	Not Used in Prior Housing Element	0	0	25	25
EL MONTE CA	3445 FLETCHER AVE	91731-3001	8581001119		OP	OP	0	14	3.27	Industrial	YES - Current	NO - Privately-Owned	Available	Not Used in Prior Housing Element	0	0	32	32
EL MONTE CA	9351 TELSTAR AVE	91731-2815	8595003005		OP	OP	0	14	1.33	Commercial	YES - Current	NO - Privately-Owned	Available	Not Used in Prior Housing Element	0	0	13	13
EL MONTE CA	9095 TELSTAR AVE	91731-2809	8595003007		OP	OP	0	14	2.70	Commercial	YES - Current	NO - Privately-Owned	Available	Not Used in Prior Housing Element	0	0	26	26
EL MONTE CA	9319 TELSTAR AVE	91731-2815	8595003009		OP	OP	0	14	3.50	Industrial	YES - Current	NO - Privately-Owned	Available	Not Used in Prior Housing Element	0	0	34	34
EL MONTE CA	9320 TELSTAR AVE	91731-2834	8595003016		OP	OP	0	14	8.01	Industrial	YES - Current	NO - Privately-Owned	Available	Not Used in Prior Housing Element	0	0	78	78
EL MONTE CA	9255 TELSTAR AVE	91731-2845	8595003034		OP	OP	0	14	3.20	Industrial	YES - Current	NO - Privately-Owned	Available	Not Used in Prior Housing Element	0	0	31	31
EL MONTE CA	3401 RIO HONDO AVE	91731-2903	8595003047	A	OP	OP	0	14	2.74	Commercial	YES - Current	NO - Privately-Owned	Available	Not Used in Prior Housing Element	0	0	27	27
EL MONTE CA	3375 RIO HONDO AVE	91731-2901	8595003048	A	OP	OP	0	14	3.42	Industrial	YES - Current	NO - Privately-Owned	Available	Not Used in Prior Housing Element	0	0	33	33
EL MONTE CA	9300 WHITMORE ST	91731-2820	8595021005		OP	OP	0	14	0.46	Industrial	YES - Current	NO - Privately-Owned	Available	Not Used in Prior Housing Element	0	0	5	5
EL MONTE CA	9240 WHITMORE ST	91731-2818	8595021012		OP	OP	0	14	0.54	Industrial	YES - Current	NO - Privately-Owned	Available	Not Used in Prior Housing Element	0	0	5	5
EL MONTE CA	3306 ROSEMEAD BLVD	91731-2808	8595022001		OP	OP	0	14	0.22	Commercial	YES - Current	NO - Privately-Owned	Available	Not Used in Prior Housing Element	0	0	2	2
EL MONTE CA	3266 ROSEMEAD BLVD	91731-2807	8595022004	C	OP	OP	0	14	0.39	Industrial	YES - Current	NO - Privately-Owned	Available	Not Used in Prior Housing Element	0	0	4	4
EL MONTE CA	3244 ROSEMEAD BLVD	91731-2807	8595022007	D	OP	OP	0	14	0.33	Industrial	YES - Current	NO - Privately-Owned	Available	Not Used in Prior Housing Element	0	0	3	3
EL MONTE CA	3238 ROSEMEAD BLVD	91731-2807	8595022008	D	OP	OP	0	14	0.34	Industrial	YES - Current	NO - Privately-Owned	Available	Not Used in Prior Housing Element	0	0	3	3
EL MONTE CA	3250 ROSEMEAD BLVD	91731-2807	8595022017	C	OP	OP	0	14	0.83	Industrial	YES - Current	NO - Privately-Owned	Available	Not Used in Prior Housing Element	0	0	8	8
EL MONTE CA	3224 ROSEMEAD BLVD	91731-2807	8595022018	D	OP	OP	0	14	1.51	Industrial	YES - Current	NO - Privately-Owned	Available	Not Used in Prior Housing Element	0	0	15	15
EL MONTE CA	FLAIR DR / WHITMORE ST		8595022019	D	OP	OP	0	14	1.32	Industrial	YES - Current	NO - Privately-Owned	Available	Not Used in Prior Housing Element	0	0	13	13
EL MONTE CA	FLAIR DR / WHITMORE ST		8595022021	C	OP	OP	0	14	0.41	Industrial	YES - Current	NO - Privately-Owned	Available	Not Used in Prior Housing Element	0	0	4	4
EL MONTE CA	3268 ROSEMEAD BLVD	91731-2807	8595022025	C	OP	OP	0	14	0.61	Industrial	YES - Current	NO - Privately-Owned	Available	Not Used in Prior Housing Element	0	0	6	6
EL MONTE CA	9235 WHITMORE ST	91731-2817	8595023007	E	OP	OP	0	14	1.59	Commercial	YES - Current	NO - Privately-Owned	Available	Not Used in Prior Housing Element	0	0	16	16
EL MONTE CA	9401 WHITMORE ST	91731-2821	8595023010	E	OP	OP	0	14	2.81	Industrial	YES - Current	NO - Privately-Owned	Available	Not Used in Prior Housing Element	0	0	28	28
EL MONTE CA	9400 WHITMORE ST	91731	8595023012	E	OP	OP	0	14	0.69	Commercial	YES - Current	NO - Privately-Owned	Available	Not Used in Prior Housing Element	0	0	7	7
EL MONTE CA	12622 ELLIOTT AVE	91732	8108001015		LDR	R1-B	0	6	0.51	Residential	YES - Current	NO - Privately-Owned	Available	Not Used in Prior Housing Element	0	0	3	2
EL MONTE CA	2436 BURKETT RD	91732	8108005008		LDR	R1-B	0	6	0.55	Residential	YES - Current	NO - Privately-Owned	Available	Not Used in Prior Housing Element	0	0	3	2
EL MONTE CA	2508 BURKETT RD	91732	8108006004		LDR	R1-B	0	6	0.51	Residential	YES - Current	NO - Privately-Owned	Available	Not Used in Prior Housing Element	0	0	3	2
EL MONTE CA	2516 BURKETT RD	91732	8108006005		LDR	R1-B	0	6	0.51	Residential	YES - Current	NO - Privately-Owned	Available	Not Used in Prior Housing Element	0	0	3	2
EL MONTE CA	2524 BURKETT RD	91732	8108006006		LDR	R1-B	0	6	0.51	Residential	YES - Current	NO - Privately-Owned	Available	Not Used in Prior Housing Element	0	0	3	2
EL MONTE CA	12526 ELLIOT AVE	91732	8108006012		LDR	R1-B	0	6	0.38	Residential	YES - Current	NO - Privately-Owned	Available	Not Used in Prior Housing Element	0	0	2	1
EL MONTE CA	12418 ELLIOTT AVE	91732	8108007010		LDR	R1-B	0	6	0.39	Residential	YES - Current	NO - Privately-Owned	Available	Not Used in Prior Housing Element	0	0	2	1
EL MONTE CA	12426 ELLIOTT AVE	91732	8108007011		LDR	R1-B	0	6	0.39	Residential	YES - Current	NO - Privately-Owned	Available	Not Used in Prior Housing Element	0	0	2	1
EL MONTE CA	2521 BURKETT RD	91732	8108007019		LDR	R1-B	0	6	0.52	Residential	YES - Current	NO - Privately-Owned	Available	Not Used in Prior Housing Element	0	0	3	2
EL MONTE CA	12440 ELLIOTT AVE	91732	8108007023		LDR	R1-B	0	6	0.51	Residential	YES - Current	NO - Privately-Owned	Available	Not Used in Prior Housing Element	0	0	3	2
EL MONTE CA	12345 FELIPE ST	91732	8108008013		LDR	R1-B	0	6	0.52	Residential	YES - Current	NO - Privately-Owned	Available	Not Used in Prior Housing Element	0	0	3	2
EL MONTE CA	12359-12361 FELIPE ST	91732	8108008015		LDR	R1-B	0	6	0.52	Residential	YES - Current	NO - Privately-Owned	Available	Not Used in Prior Housing Element	0	0	3	1
EL MONTE CA	12352 ELLIOT AVE	91732	8108008016		LDR	R1-B	0	6	0.59	Residential	YES - Current	NO - Privately-Owned	Available	Not Used in Prior Housing Element	0	0	3	2
EL MONTE CA	2517-2519 BRYCE RD	91732	8108008025		LDR	R1-B	0	6	0.52	Residential	YES - Current	NO - Privately-Owned	Available	Not Used in Prior Housing Element	0	0	3	1
EL MONTE CA	12378 ELLIOT AVE	91732	8108008030		LDR	R1-B	0	6	0.33	Residential	YES - Current	NO - Privately-Owned	Available	Not Used in Prior Housing Element	0	0	2	1
EL MONTE CA	2443-2445 BURKETT RD	91732	8108009009		LDR	R1-B	0	6	0.52	Residential	YES - Current	NO - Privately-Owned	Available	Not Used in Prior Housing Element	0	0	3	1
EL MONTE CA	NO ADDRESS	91732	8108011003		LDR	R1-B	0	6	0.55	Residential	YES - Current	NO - Privately-Owned	Available	Not Used in Prior Housing Element	0	0	3	3
EL MONTE CA	12337 KLINGERMAN ST	91732	8108011007		LDR	R1-B	0	6	0.56	Residential	YES - Current	NO - Privately-Owned	Available	Not Used in Prior Housing Element	0	0	3	2
EL MONTE CA	12353 KLINGERMAN ST	91732	8108011009		LDR	R1-B	0	6	0.52	Residential	YES - Current	NO - Privately-Owned	Available	Not Used in Prior Housing Element	0	0	3	2
EL MONTE CA	12328 FELIPE ST	91732	8108011012		LDR	R1-B	0	6	0.76	Residential	YES - Current	NO - Privately-Owned	Available	Not Used in Prior Housing Element	0	0	4	3
EL MONTE CA	12375 CLINTON ST	91732	8108016011		LDR	R1-B	0	6	0.34	Residential	YES - Current	NO - Privately-Owned	Available	Not Used in Prior Housing Element	0	0	2	1
EL MONTE CA	12543 FINEVIEW ST	91732	8108023001		LDR	R1-B	0	6	0.37	Residential	YES - Current	NO - Privately-Owned	Available	Not Used in Prior Housing Element	0	0	2	1
EL MONTE CA	2213 PARKWAY DR	91732	8108023002		LDR	R1-B	0	6	0.43	Residential	YES - Current	NO - Privately-Owned	Available	Not Used in Prior Housing Element	0	0	2	1
EL MONTE CA	2224 BURKETT RD	91732	8108023010		LDR	R1-B	0	6	0.59	Residential	YES - Current	NO - Privately-Owned	Available	Not Used in Prior Housing Element	0	0	3	2
EL MONTE CA	2234 BURKETT RD	91732	8108023011		LDR	R1-B	0	6	0.62	Residential	YES - Current	NO - Privately-Owned	Available	Not Used in Prior Housing Element	0	0	3	2
EL MONTE CA	12519 RINEVIEW ST	91732	8108023017		LDR	R1-B	0	6	0.45	Residential	YES - Current	NO - Privately-Owned	Available	Not Used in Prior Housing Element	0	0	2	1
EL MONTE CA	12361 ELLIOTT AVE	91732	8109002002		LDR	R1-B	0	6	0.52	Residential	YES - Current	NO - Privately-Owned	Available	Not Used in Prior Housing Element	0	0	3	2
EL MONTE CA	12337-12381 ELLIOTT AVE	91732	8109002004		LDR	R1-B	0	6	0.52	Residential	YES - Current	NO - Privately-Owned	Available	Not Used in Prior Housing Element	0	0	3	1
EL MONTE CA	12405-12407 ELLIOTT AVE	91732	8109002007		LDR	R1-B	0	6	0.52	Residential	YES - Current	NO - Privately-Owned	Available	Not Used in Prior Housing Element	0	0	3	1
EL MONTE CA	12423 ELLIOTT AVE	91732	8109002011		LDR	R1-B	0	6	0.52	Residential	YES - Current	NO - Privately-Owned	Available	Not Used in Prior Housing Element	0	0	3	2
EL MONTE CA	12442-12444 POINSETTIA AVE	91732	8109002013		LDR	R1-B	0	6	0.52	Residential	YES - Current	NO - Privately-Owned	Available	Not Used in Prior Housing Element	0	0	3	1
EL MONTE CA	12404 POINSETTIA AVE	91732	8109002019		LDR	R1-B	0	6	0.52	Residential	YES - Current	NO - Privately-Owned	Available	Not Used in Prior Housing Element	0	0	3	2
EL MONTE CA	12424 POINSETTIA AVE	91732	8109002025		LDR	R1-B	0	6	0.34	Residential	YES - Current	NO - Privately-Owned	Available	Not Used in Prior Housing Element	0	0	2	1
EL MONTE CA	12459 ELLIOTT AVE	91732	8109003005		LDR	R1-B	0	6	0.35	Residential	YES - Current	NO - Privately-Owned	Available	Not Used in Prior Housing Element	0	0	2	1
EL MONTE CA	2631 PARKWAY DR	91732	8109003012		LDR	R1-B	0	6	0.57	Residential	YES - Current	NO - Privately-Owned	Available	Not Used in Prior Housing Element	0	0	3	2
EL MONTE CA	2639 PARKWAY DR	91732	8109003013		LDR	R1-B	0	6	1.05	Residential	YES - Current	NO - Privately-Owned	Available	Not Used in Prior Housing Element	0	0	3	2
EL MONTE CA	12441 ELLIOTT AVE	91732	8109003026		LDR	R1-B	0	6	0.53	Residential	YES - Current	NO - Privately-Owned	Available	Not Used in Prior Housing Element	0	0	6	5
EL MONTE CA	2765 PARKWAY DR	91732	8109004003		LDR	R1-B	0	6	0.48	Residential	YES - Current	NO - Privately-Owned	Available	Not Used in Prior Housing Element	0	0	2	1
EL MONTE CA	2749 PARKWAY DR	91732	8109004005		LDR	R1-B	0	6	0.48	Residential	YES - Current	NO - Privately-Owned	Available	Not Used in Prior Housing Element	0	0	2	1
EL MONTE CA	2745 PARKWAY DR	91732	8109004006		LDR	R1-B	0	6	0.48	Residential	YES - Current	NO - Privately-Owned	Available	Not Used in Prior Housing Element	0	0	2	1
EL MONTE CA	2735 PARKWAY DR	91732	8109004007		LDR	R1-B	0	6	0.48	Residential	YES - Current	NO - Privately-Owned	Available	Not Used in Prior Housing Element	0	0	2	1
EL MONTE CA	2731 PARKWAY DR	91732	8109004008		LDR	R1-B	0	6	0.48	Residential	YES - Current	NO - Privately-Owned	Available	Not Used in Prior Housing Element	0	0	2	1
EL MONTE CA	12507 POINSETTIA AVE	91732	8109004017		LDR	R1-B	0	6	0.48	Residential	YES - Current	NO - Privately-Owned	Available	Not Used in Prior Housing Element	0	0	2	1
EL MONTE CA	12510 MAGNOLIA ST	91732	8109004022		LDR	R1-B	0	6	0.48	Residential	YES - Current	NO - Privately-Owned	Available	Not Used in Prior Housing Element	0	0	2	1
EL MONTE CA	12518 MAGNOLIA ST	91732	8109004023		LDR	R1-B	0	6	0.48	Residential	YES - Current	NO - Privately-Owned	Available	Not Used in Prior Housing Element	0	0	2	1
EL MONTE CA	NO ADDRESS	91732	8109004024		LDR	R1-B	0	6	0.51	Residential	YES - Current	NO - Privately-Owned	Available	Not Used in Prior Housing Element	0	0	3	3
EL MONTE CA	12414 MAGNOLIA ST	91732	8109005005		LDR	R1-B	0	6	0.35	Residential	YES - Current	NO - Privately-Owned	Available	Not Used in Prior Housing Element	0	0	2	1
EL MONTE CA	12418 MAGNOLIA ST	91732	8109005006		LDR	R1-B	0	6	0.35	Residential	YES - Current	NO - Privately-Owned	Available	Not Used in Prior Housing Element	0	0	2	1
EL MONTE CA	12353 MAGNOLIA ST	91732	8109007020		LDR	R1-B	0	6	0.69	Residential	YES - Current	NO - Privately-Owned	Available	Not Used in Prior Housing Element	0	0	4	3
EL MONTE CA	12338 DAHLIA AVE	91732	8109007022		LDR	R1-B	0	6	0.42	Residential	YES - Current	NO - Privately-Owned	Available	Not Used in Prior Housing Element	0	0	2	1
EL MONTE CA	12414-12416 MAGNOLIA ST	91732	8109010006		LDR	R1-B	0	6	0.55	Residential	YES - Current	NO - Privately-Owned	Available	Not Used in Prior Housing Element	0	0	3	1
EL MONTE CA	2114 PARKWAY DR	91732	8113025010		LDR	R1-B	0	6	0.47	Residential	YES - Current	NO - Privately-Owned	Available	Not Used in Prior Housing Element	0	0	2	1
EL MONTE CA	2142 PARKWAY DR	91732	8113025012		LDR	R1-B	0	6	0.43	Residential	YES - Current	NO - Privately-Owned	Available	Not Used in Prior Housing Element	0	0	2	1
EL MONTE CA	2120 PARKWAY DR	91732	8113025016		LDR	R1												

Jurisdiction Name	Site Address/Intersection	5 Digit ZIP Code	Assessor Parcel Number	Consolidated Sites	General Plan Designation (Current)	Zoning Designation (Current)	Minimum Density Allowed (units/acre)	Max Density Allowed (units/acre)	Parcel Size (Acres)	Existing Use/Vacancy	Infrastructure	Publicly-Owned	Site Status	Identified in Last/Last Two Planning Cycle(s)	Lower Income Capacity	Moderate Income Capacity	Above Moderate Income Capacity	Total Capacity
EL MONTE CA	4111 ROWLAND AVE	91731-1008	8577009046	DR	HDR	R-4	0	25	0.05	Vacant	YES - Planned	NO - Privately-Owned	Pending	Not Used in Prior Housing Element			1	1
EL MONTE CA	VALLEY BLVD / ROWLAND AVE		8577009055	DR	HDR	R-4	0	25	3.07	Vacant	YES - Planned	NO - Privately-Owned	Pending	Not Used in Prior Housing Element			68	68
EL MONTE CA	11100 VALLEY BLVD	91731-2500	8568032004		DC	DSP/MV	0	50	2.91	Commercial	YES - Current	NO - Privately-Owned	Available	Not Used in Prior Housing Element		102		102
EL MONTE CA	VALLEY BLVD / WIGGINS AVE		8568032900	K	DC	DSP/MV	0	50	1.87	Government	YES - Current	YES - Federally-Owned	Available	Not Used in Prior Housing Element	65			65
EL MONTE CA	11141 VALLEY BLVD	91731-2518	8568032903	K	DC	DSP/MV	0	50	2.67	Government	YES - Current	YES - Federally-Owned	Available	Not Used in Prior Housing Element	60	34		94
EL MONTE CA	11017 VALLEY BLVD	91731-2516	8568033009	L	DC	DSP/MV	0	50	0.15	Commercial	YES - Current	NO - Privately-Owned	Available	Not Used in Prior Housing Element		5		5
EL MONTE CA	VALLEY BLVD / WIGGINS AVE		8568033011	L	DC	DSP/MV	0	50	0.15	Commercial	YES - Current	NO - Privately-Owned	Available	Not Used in Prior Housing Element	3	2		5
EL MONTE CA	11041 VALLEY BLVD	91731-2516	8568033014	L	DC	DSP/MV	0	50	0.16	Commercial	YES - Current	NO - Privately-Owned	Available	Not Used in Prior Housing Element		4		4
EL MONTE CA	11029 VALLEY BLVD	91731-2516	8568033022	L	DC	DSP/MV	0	50	0.31	Commercial	YES - Current	NO - Privately-Owned	Available	Not Used in Prior Housing Element			11	11
EL MONTE CA	11025 VALLEY BLVD	91731-2516	8568033074	L	DC	DSP/MV	0	50	0.15	Commercial	YES - Current	NO - Privately-Owned	Available	Not Used in Prior Housing Element			5	5
EL MONTE CA	3503 LEXINGTON AVE	91731-2607	8579003019	T	DC	DSP/MV	0	50	0.17	Commercial	YES - Current	NO - Privately-Owned	Available	Not Used in Prior Housing Element		5		5
EL MONTE CA	3510 GRANADA AVE	91731-2409	8579003901	T	DC	DSP/MV	0	50	0.19	Residential	YES - Current	NO - Privately-Owned	Available	Not Used in Prior Housing Element		6		6
EL MONTE CA	3511 LEXINGTON AVE	91731-2607	8579003902	T	DC	DSP/MV	0	50	0.18	Commercial	YES - Current	NO - Privately-Owned	Available	Not Used in Prior Housing Element		6		6
EL MONTE CA	3507 LEXINGTON AVE	91731-2607	8579003903	T	DC	DSP/MV	0	50	0.17	Residential	YES - Current	NO - Privately-Owned	Available	Not Used in Prior Housing Element		5		5
EL MONTE CA	RAMONA BLVD / GRANADA AVE		8579003904	T	DC	DSP/MV	0	50	0.55	Miscellaneous	YES - Current	NO - Privately-Owned	Available	Not Used in Prior Housing Element		19		19
EL MONTE CA	3502 GRANADA AVE	91731-2409	8579003905	T	DC	DSP/MV	0	50	0.17	Residential	YES - Current	NO - Privately-Owned	Available	Not Used in Prior Housing Element		5		5
EL MONTE CA	3539 LEXINGTON AVE	91731-2607	8579003906	T	DC	DSP/MV	0	50	0.34	Residential	YES - Current	NO - Privately-Owned	Available	Not Used in Prior Housing Element		8		8
EL MONTE CA	10728 RAMONA BLVD	91731-2601	8579006023		DC	DSP/MV	0	50	0.35	Commercial	YES - Current	NO - Privately-Owned	Available	Not Used in Prior Housing Element		12		12
EL MONTE CA	10802 RAMONA BLVD	91731-2628	8579008001		DC	DSP/MV	0	50	0.30	Commercial	YES - Current	NO - Privately-Owned	Available	Not Used in Prior Housing Element		10		10
EL MONTE CA	3449 TYLER AVE	91731-3103	8579012001	H	DC	DSP/MV	0	50	0.14	Commercial	YES - Current	NO - Privately-Owned	Available	Not Used in Prior Housing Element		5		5
EL MONTE CA	10948 RAMONA BLVD	91731-2633	8579012005	H	DC	DSP/MV	0	50	0.09	Commercial	YES - Current	NO - Privately-Owned	Available	Not Used in Prior Housing Element		3		3
EL MONTE CA	10946 RAMONA BLVD	91731-2633	8579012006	H	DC	DSP/MV	0	50	0.06	Commercial	YES - Current	NO - Privately-Owned	Available	Not Used in Prior Housing Element		2		2
EL MONTE CA	10942 RAMONA BLVD	91731-2644	8579012007	H	DC	DSP/MV	0	50	0.16	Commercial	YES - Current	NO - Privately-Owned	Available	Not Used in Prior Housing Element		6		6
EL MONTE CA	10958 RAMONA BLVD	91731-2633	8579012019	H	DC	DSP/MV	0	50	0.09	Commercial	YES - Current	NO - Privately-Owned	Available	Not Used in Prior Housing Element		3		3
EL MONTE CA	10954 RAMONA BLVD	91731-2633	8579012020	H	DC	DSP/MV	0	50	0.14	Residential	YES - Current	NO - Privately-Owned	Available	Not Used in Prior Housing Element		4		4
EL MONTE CA	3453 TYLER AVE	91731-3103	8579012021	H	DC	DSP/MV	0	50	0.08	Commercial	YES - Current	NO - Privately-Owned	Available	Not Used in Prior Housing Element		3		3
EL MONTE CA	11022 RAMONA BLVD	91731-2632	8579014001	J	DC	DSP/MV	0	50	0.14	Commercial	YES - Current	NO - Privately-Owned	Available	Not Used in Prior Housing Element		5		5
EL MONTE CA	RAMONA BLVD / CALIFORNIA AVE		8579014900	J	DC	DSP/MV	0	50	0.31	Government	YES - Current	YES - City-Owned	Available	Not Used in Prior Housing Element		11		11
EL MONTE CA	11016 RAMONA BLVD	91731-2632	8579014901	I	DC	DSP/MV	0	50	0.14	Vacant	YES - Planned	NO - Privately-Owned	Pending	Not Used in Prior Housing Element	9			9
EL MONTE CA	3454 TYLER AVE	91731-3104	8579014902	I	DC	DSP/MV	0	50	0.32	Vacant	YES - Planned	NO - Privately-Owned	Pending	Not Used in Prior Housing Element	22			22
EL MONTE CA	3436 TYLER AVE	91731-3100	8579014903	I	DC	DSP/MV	0	50	0.28	Vacant	YES - Planned	NO - Privately-Owned	Pending	Not Used in Prior Housing Element	19			19
EL MONTE CA	TYLER AVE / IRIS LN		8579022907		DC	DSP/MV	0	50	2.37	Commercial	YES - Current	NO - Privately-Owned	Available	Not Used in Prior Housing Element		83		83
EL MONTE CA	10953 RAMONA BLVD	91731-2629	8579023905		DC	DSP/MV	0	50	3.45	Institutional	YES - Current	NO - Privately-Owned	Available	Not Used in Prior Housing Element	30	91		121
EL MONTE CA	10925 RAILROAD ST	91731	8575017904		DC	DSP/ST	0	80	2.40	Government	YES - Current	YES - County-Owned	Available	Not Used in Prior Housing Element		135		135
EL MONTE CA	3641 CENTER AVE REAR	91731-2523	8575019013	O	DC	DSP/ST	0	80	0.16	Residential	YES - Current	NO - Privately-Owned	Available	Not Used in Prior Housing Element	8			8
EL MONTE CA	10931 VALLEY BLVD	91731-2537	8575019028	O	DC	DSP/ST	0	80	0.21	Commercial	YES - Current	NO - Privately-Owned	Available	Not Used in Prior Housing Element	12			12
EL MONTE CA	3649 TYLER AVE	91731-2505	8575019030	M	DC	DSP/ST	0	80	0.52	Commercial	YES - Planned	NO - Privately-Owned	Pending	Not Used in Prior Housing Element	41			41
EL MONTE CA	VALLEY BLVD / CENTER AVE		8575019032	M	DC	DSP/ST	0	80	0.63	Commercial	YES - Planned	NO - Privately-Owned	Pending	Not Used in Prior Housing Element	49			49
EL MONTE CA	EL MONTE AVE / RAILROAD ST		8575019803	O	DC	DSP/ST	0	80	0.53	Miscellaneous	YES - Current	NO - Privately-Owned	Available	Not Used in Prior Housing Element	30			30
EL MONTE CA	3640 EL MONTE AVE	91731-2526	8575019804	O	DC	DSP/ST	0	80	0.68	Miscellaneous	YES - Current	NO - Privately-Owned	Available	Not Used in Prior Housing Element	38			38
EL MONTE CA	CENTER AVE / RAILROAD ST		8575019900	O	DC	DSP/ST	0	80	0.48	Government	YES - Current	YES - City-Owned	Available	Not Used in Prior Housing Element	27			27
EL MONTE CA	3637 TYLER AVE	91731-2505	8575019909	M	DC	DSP/ST	0	80	0.20	Commercial	YES - Planned	NO - Privately-Owned	Pending	Not Used in Prior Housing Element	16			16
EL MONTE CA	10930 VALLEY BLVD	91731-2515	8575020007	P	DC	DSP/ST	0	45	0.17	Commercial	YES - Current	NO - Privately-Owned	Available	Not Used in Prior Housing Element			5	5
EL MONTE CA	VALLEY BLVD / EL MONTE AVE		8575020900	P	DC	DSP/ST	0	45	0.67	Government	YES - Current	YES - City-Owned	Available	Not Used in Prior Housing Element			21	21
EL MONTE CA	VALLEY BLVD / EL MONTE AVE		8575020902	Q	DC	DSP/ST	0	45	0.40	Government	YES - Current	YES - City-Owned	Available	Not Used in Prior Housing Element			13	13
EL MONTE CA	VALLEY BLVD / MONTEREY AVE		8575020905	Q	DC	DSP/ST	0	45	0.19	Government	YES - Current	YES - City-Owned	Available	Not Used in Prior Housing Element			6	6
EL MONTE CA	3614 EL MONTE AVE	91731-2526	8575020906	P	DC	DSP/ST	0	45	0.35	Residential	YES - Current	NO - Privately-Owned	Available	Not Used in Prior Housing Element		11		11
EL MONTE CA	3615 MONTEREY AVE	91731-2501	8575023020	R	DC	DSP/ST	0	45	0.35	Commercial	YES - Current	NO - Privately-Owned	Available	Not Used in Prior Housing Element			11	11
EL MONTE CA	VALLEY BLVD / GRANADA AVE		8575023911	R	DC	DSP/ST	0	45	1.07	Commercial	YES - Current	NO - Privately-Owned	Available	Not Used in Prior Housing Element	28	6		34
EL MONTE CA	3560 SANTA ANITA AVE	91731-2454	8579001023		DC	DSP/ST	0	80	3.85	Commercial	YES - Current	NO - Privately-Owned	Available	Not Used in Prior Housing Element			205	205
EL MONTE CA	3548 SANTA ANITA AVE	91731-2427	8579002004		DC	DSP/ST	0	80	0.36	Vacant	YES - Current	NO - Privately-Owned	Available	Not Used in Prior Housing Element			20	20
EL MONTE CA	3503 GRANADA AVE	91731-2408	8579002010	U	DC	DSP/ST	0	80	0.21	Commercial	YES - Current	NO - Privately-Owned	Available	Not Used in Prior Housing Element			12	12
EL MONTE CA	3503 GRANADA AVE	91731-2408	8579002011	U	DC	DSP/ST	0	80	0.17	Residential	YES - Current	NO - Privately-Owned	Available	Not Used in Prior Housing Element			9	9
EL MONTE CA	3507 GRANADA AVE	91731-2408	8579002012	U	DC	DSP/ST	0	80	0.18	Residential	YES - Current	NO - Privately-Owned	Available	Not Used in Prior Housing Element			9	9
EL MONTE CA	3511 GRANADA AVE	91731-2408	8579002013	U	DC	DSP/ST	0	80	0.18	Residential	YES - Current	NO - Privately-Owned	Available	Not Used in Prior Housing Element			9	9
EL MONTE CA	3508 SANTA ANITA AVE	91731-2427	8579002020	U	DC	DSP/ST	0	80	0.64	Industrial	YES - Current	NO - Privately-Owned	Available	Not Used in Prior Housing Element			36	36
EL MONTE CA	RAMONA BLVD / GRANADA AVE		8579002904	U	DC	DSP/ST	0	80	0.73	Miscellaneous	YES - Current	NO - Privately-Owned	Available	Not Used in Prior Housing Element	41			41
EL MONTE CA	10824 MAIN ST		8579026003		DC	DSP/ST	0	35	0.13	Commercial	YES - Current	NO - Privately-Owned	Available	Not Used in Prior Housing Element			3	3
EL MONTE CA	KING CT / RAILROAD ST		8575017909	N	DC	DSP/ST	0	65	1.41	Government	YES - Planned	YES - Other Publicly-Owned	Pending	Not Used in Prior Housing Element	34			34
EL MONTE CA	221 EL MONTE AVE	91731-4107	8575019907	N	DC	DSP/ST	0	65	0.72	Industrial	YES - Planned	NO - Privately-Owned	Pending	Not Used in Prior Housing Element	17			17
EL MONTE CA	3649 EL MONTE AVE	91731-2525	8575019908	N	DC	DSP/ST	0	65	0.10	Residential	YES - Planned	NO - Privately-Owned	Pending	Not Used in Prior Housing Element			2	2
EL MONTE CA	10819 VALLEY BLVD	91731-2536	8575019910	N	DC	DSP/ST	0	65	0.19	Commercial	YES - Planned	NO - Privately-Owned	Pending	Not Used in Prior Housing Element	5			5
EL MONTE CA	3637 EL MONTE AVE	91731-2525	8575019911	N	DC	DSP/ST	0	65	0.17	Residential	YES - Planned	NO - Privately-Owned	Pending	Not Used in Prior Housing Element	4			4
EL MONTE CA	3645 EL MONTE AVE	91731-2525	8575019912	N	DC	DSP/ST	0	65	0.18	Residential	YES - Planned	NO - Privately-Owned	Pending	Not Used in Prior Housing Element	5			5
EL MONTE CA	3716 MONTEREY AVE	91731-2504	8575019913	N	DC	DSP/ST	0	65	0.11	Residential	YES - Planned	NO - Privately-Owned	Pending	Not Used in Prior Housing Element			2	2
EL MONTE CA	3704 MONTEREY AVE	91731-2504	8575019914	N	DC	DSP/ST	0	65	0.17	Residential	YES - Planned	NO - Privately-Owned	Pending	Not Used in Prior Housing Element			4	4
EL MONTE CA	KING CT / MONTEREY AVE		8575021932	N	DC	DSP/ST	0	65	0.18	Commercial	YES - Planned	NO - Privately-Owned	Pending	Not Used in Prior Housing Element			5	5
EL MONTE CA	KING CT / MONTEREY AVE		8575021934	N	DC	DSP/ST	0	65	0.17	Commercial								

Jurisdiction Name	Site Address/Intersection	5 Digit ZIP Code	Assessor Parcel Number	Consolidated Sites	General Plan Designation (Current)	Zoning Designation (Current)	Minimum Density Allowed (units/acre)	Max Density Allowed (units/acre)	Parcel Size (Acres)	Existing Use/Vacancy	Infrastructure	Publicly-Owned	Site Status	Identified in Last/Last Two Planning Cycle(s)	Lower Income Capacity	Moderate Income Capacity	Above Moderate Income Capacity	Total Capacity
EL MONTE CA	3558 PALM DR	91731-2609	8579026904	S	DC	DSP/ZC	0	65	0.08	Commercial	YES - Current	NO - Privately-Owned	Available	Not Used in Prior Housing Element			4	4
EL MONTE CA	CLEMINSON ST / PALM DR		8579026905	S	DC	DSP/ZC	0	65	0.08	Government	YES - Current	YES - City-Owned	Available	Not Used in Prior Housing Element			4	4
EL MONTE CA	3571 PALM DR	91731-2609	8579026906	S	DC	DSP/ZC	0	65	0.06	Residential	YES - Current	NO - Privately-Owned	Available	Not Used in Prior Housing Element			2	2
EL MONTE CA	3555 PALM DR	91731-2609	8579026907	S	DC	DSP/ZC	0	65	0.06	Residential	YES - Current	NO - Privately-Owned	Available	Not Used in Prior Housing Element			2	2
EL MONTE CA	3567 PALM DR	91731-2609	8579026908	S	DC	DSP/ZC	0	65	0.06	Residential	YES - Current	NO - Privately-Owned	Available	Not Used in Prior Housing Element			2	2
EL MONTE CA	3571 LEXINGTON AVE	91731-2607	8579027013		DC	DSP/ZC	0	65	0.21	Commercial	YES - Current	NO - Privately-Owned	Available	Not Used in Prior Housing Element			9	9
EL MONTE CA	3577 LEXINGTON AVE	91731-2607	8579027900		DC	DSP/ZC	0	65	0.40	Government	YES - Current	YES - City-Owned	Available	Not Used in Prior Housing Element	18			18

Table B: Candidate Sites Identified to be Rezoned to Accommodate Shortfall Housing Need, Table Starts in Cell A2

Jurisdiction Name	Site Address/Intersection	5 Digit ZIP Code	Assessor Parcel Number	Very Low-Income	Lower Income Capacity	Moderate Income Capacity	Above Moderate Income Capacity	Type of Shortfall	Parcel Size (Acres)	General Plan Designation (Current)	Zoning Designation (Current)	Optional Information ⁵ Proposed GP	Optional Information ⁶ Proposed Zoning	Minimum Density Allowed (units/acre)	Max Density Allowed (units/acre)	Total Capacity	Vacant/Nonvacant	Description of Existing Uses
EL MONTE CA	03546 BALDWIN AVE		8578006016				4	Both	0.44	GC	C-3	N/C	C-2	0	25	4	Vacant	Vacant
EL MONTE CA	2827 DURFEE AVE	91732-3515	8106012005				11	Both	0.66	IBP	IBP	MMU	MMU	25	35	11	Non-Vacant	Residential
EL MONTE CA	2851 DURFEE AVE	91732-3515	8106012010				31	Both	1.31	IBP	IBP	MMU	MMU	25	35	31	Non-Vacant	Industrial
EL MONTE CA	2859 DURFEE AVE	91732-3515	8106012012				13	Both	0.57	IBP	IBP	MMU	MMU	25	35	13	Non-Vacant	Industrial
EL MONTE CA	12322 DAHLIA AVE	91732-3610	8109007007				4	Both	0.18	IBP	IBP	MMU	MMU	25	35	4	Non-Vacant	Residential
EL MONTE CA	2840 DURFEE AVE	91732-3516	8109007030				17	Both	0.70	IBP	IBP	MMU	MMU	25	35	17	Non-Vacant	Industrial
EL MONTE CA	2908 DURFEE AVE	91732-3518	8109011006				10	Both	0.55	IBP	IBP	MMU	MMU	25	25	10	Non-Vacant	Industrial
EL MONTE CA	12315 DAHLIA AVE	91732-3609	8109011007				5	Both	0.27	IBP	IBP	MMU	MMU	25	25	5	Non-Vacant	Industrial
EL MONTE CA	12327 DAHLIA AVE	91732-3609	8109011008				5	Both	0.28	IBP	IBP	MMU	MMU	25	25	5	Non-Vacant	Industrial
EL MONTE CA	5128 PECK RD	91732-1426	8541005027				8	Both	0.48	MDR	R-3	MMU	MMU	25	25	8	Non-Vacant	Commercial
EL MONTE CA	5120 PECK RD	91732-1426	8541005028				8	Both	0.48	MDR	R-3	MMU	MMU	25	25	8	Non-Vacant	Commercial
EL MONTE CA	4922 PECK RD	91732-1422	8547002013				3	Both	0.20	MDR	R-3	MMU	MMU	25	25	3	Non-Vacant	Commercial
EL MONTE CA	4900 PECK RD	91732-1422	8547002070				5	Both	0.32	MDR	R-3	MMU	MMU	25	25	5	Non-Vacant	Commercial
EL MONTE CA	4918 PECK RD	91732-1422	8547002071				4	Both	0.23	MDR	R-3	MMU	MMU	25	25	4	Non-Vacant	Commercial
EL MONTE CA	3700 CYPRESS AVE	91731-2725	8568026002				14	Both	0.73	IBP	IBP	HDR	R-4	0	25	14	Non-Vacant	Industrial
EL MONTE CA	3640 CYPRESS AVE	91731-2723	8568026034				20	Both	1.07	IBP	IBP	HDR	R-4	0	25	20	Non-Vacant	Industrial
EL MONTE CA	11312 ORCHARD ST	91731-2706	8568026053				48	Both	2.54	IBP	IBP	HDR	R-4	0	25	48	Non-Vacant	Industrial
EL MONTE CA	10902 GRAND AVE	91780-3567	8574020017				16	Both	0.94	IBP	IBP	HDR	R-4	0	25	16	Non-Vacant	Industrial
EL MONTE CA	10946 GRAND AVE	91780-3551	8574020018				39	Both	2.24	IBP	IBP	HDR	R-4	0	25	39	Non-Vacant	Industrial
EL MONTE CA	3713 1/2 TYLER AVE	91731-2033	8575017006				4	Both	0.21	IBP	IBP	HDR	R-4	0	25	4	Non-Vacant	Commercial
EL MONTE CA	3713 TYLER AVE	91731-2033	8575017007				4	Both	0.22	IBP	IBP	HDR	R-4	0	25	4	Non-Vacant	Commercial
EL MONTE CA	3675 TYLER AVE	91731-2542	8575017008				18	Both	1.00	IBP	IBP	HDR	R-4	0	25	18	Non-Vacant	Commercial
EL MONTE CA	10750 SAINT LOUIS DR	91731-2028	8575017009	20	19			Both	2.21	IBP	IBP	HDR	R-4	0	25	39	Non-Vacant	Industrial
EL MONTE CA	4024 DURFEE AVE	91732-2510	8549004900	117	117			Both	8.51	PF	PF	SP	SP	0	25	234	Non-Vacant	Government
EL MONTE CA	DURFEE AVE / DEANA ST		8549005900	70	71			Both	5.14	PF	PF	SP	SP	0	25	141	Non-Vacant	Government
EL MONTE CA	9934 GARVEY AVE	91733-1230	8102001023	6	6			Both	0.35	MMU	MMU	UD	UD	35	50	12	Non-Vacant	Commercial
EL MONTE CA	9900 GARVEY AVE	91733-1230	8102001027	8	7		41	Both	1.62	MMU	MMU	UD	UD	35	50	56	Non-Vacant	Commercial
EL MONTE CA	9920 GARVEY AVE	91733-1230	8102001028	12	12		19	Both	1.24	MMU	MMU	UD	UD	35	50	43	Non-Vacant	Commercial
EL MONTE CA	9928 GARVEY AVE	91733-1230	8102001029	7	7			Both	0.40	MMU	MMU	UD	UD	35	50	14	Non-Vacant	Commercial
EL MONTE CA	2727 SEAMAN AVE	91733-1935	8102003010			6		Both	0.20	MMU	MMU	UD	UD	35	50	6	Non-Vacant	Industrial
EL MONTE CA	2731 SEAMAN AVE	91733-1935	8102003011			6		Both	0.19	MMU	MMU	UD	UD	35	50	6	Non-Vacant	Residential
EL MONTE CA	2735 SEAMAN AVE	91733-1935	8102003012			6		Both	0.18	MMU	MMU	UD	UD	35	50	6	Non-Vacant	Residential
EL MONTE CA	2741 SEAMAN AVE	91733-1935	8102003013			6		Both	0.18	MMU	MMU	UD	UD	35	50	6	Non-Vacant	Commercial
EL MONTE CA	9870 GARVEY AVE	91733-4703	8102003014			6		Both	0.17	MMU	MMU	UD	UD	35	50	6	Non-Vacant	Commercial
EL MONTE CA	9866 GARVEY AVE	91733-1289	8102003015			11		Both	0.33	MMU	MMU	UD	UD	35	50	11	Non-Vacant	Commercial
EL MONTE CA	9844 GARVEY AVE	91733-1284	8102003019				29	Both	1.17	MMU	MMU	UD	UD	35	50	29	Non-Vacant	Commercial
EL MONTE CA	2721 SEAMAN AVE	91733-1935	8102003028			3		Both	0.10	MMU	MMU	UD	UD	35	50	3	Non-Vacant	Residential
EL MONTE CA	9869 GIOVANE ST	91733-1801	8102003029			2		Both	0.10	MMU	MMU	UD	UD	35	50	2	Non-Vacant	Residential
EL MONTE CA	2745 SEAMAN AVE	91733-1935	8102003032				10	Both	0.29	MMU	MMU	UD	UD	35	50	10	Non-Vacant	Industrial
EL MONTE CA	9858 GARVEY AVE	91733-1228	8102003033				12	Both	0.35	MMU	MMU	UD	UD	35	50	12	Non-Vacant	Commercial
EL MONTE CA	10420 GARVEY AVE	91733-2221	8103001010	6	5			Both	0.30	MMU	MMU	UD	UD	35	50	11	Non-Vacant	Commercial
EL MONTE CA	10458 GARVEY AVE	91733-2221	8103001011	9	9			Both	0.51	MMU	MMU	UD	UD	35	50	18	Non-Vacant	Commercial
EL MONTE CA	10514 GARVEY AVE	91733-2211	8103001012	7	7			Both	0.41	MMU	MMU	UD	UD	35	50	14	Non-Vacant	Commercial
EL MONTE CA	10452 GARVEY AVE	91733-2221	8103001013	3	3			Both	0.18	MMU	MMU	UD	UD	35	50	6	Non-Vacant	Commercial
EL MONTE CA	10534 GARVEY AVE	91733-2211	8103001014	6	6			Both	0.34	MMU	MMU	UD	UD	35	50	12	Non-Vacant	Commercial
EL MONTE CA	10460 GARVEY AVE	91733-2264	8103001015	21	21			Both	1.19	MMU	MMU	UD	UD	35	50	42	Non-Vacant	Commercial
EL MONTE CA	10334 GARVEY AVE	91733-2136	8103005011	5	5			Both	0.66	MMU	MMU	UD	UD	35	50	10	Non-Vacant	Commercial
EL MONTE CA	10320 GARVEY AVE	91733-2136	8103005012	4	3			Both	0.44	MMU	MMU	UD	UD	35	50	7	Non-Vacant	Commercial
EL MONTE CA	2744 EDWARDS AVE	91733-2058	8103031006			3		Both	0.41	MMU	MMU	UD	UD	35	50	3	Non-Vacant	Residential
EL MONTE CA	10100 GARVEY AVE	91733-2006	8103031008				7	Both	0.23	MMU	MMU	UD	UD	35	50	7	Non-Vacant	Commercial
EL MONTE CA	10112 GARVEY AVE	91733-2006	8103031009				14	Both	0.64	MMU	MMU	UD	UD	35	50	14	Non-Vacant	Commercial
EL MONTE CA	2732 MERCED AVE	91733-1934	8103032009	2	2			Both	0.14	MMU	MMU	UD	UD	35	50	4	Non-Vacant	Residential
EL MONTE CA	2738 MERCED AVE	91733-1934	8103032010	3	3			Both	0.20	MMU	MMU	UD	UD	35	50	6	Non-Vacant	Residential
EL MONTE CA	10004 GARVEY AVE	91733-2004	8103032011	8	8			Both	0.44	MMU	MMU	UD	UD	35	50	16	Non-Vacant	Industrial
EL MONTE CA	10012 GARVEY AVE	91733-2083	8103032014	21	20			Both	1.22	MMU	MMU	UD	UD	35	50	41	Non-Vacant	Commercial
EL MONTE CA	10020 GARVEY AVE	91733-2004	8103032015	7	6			Both	0.38	MMU	MMU	UD	UD	35	50	13	Non-Vacant	Commercial
EL MONTE CA	10042 GARVEY AVE	91733-2004	8103032016	6	5			Both	0.41	MMU	MMU	UD	UD	35	50	11	Non-Vacant	Commercial
EL MONTE CA	10045 GIOVANE ST	91733-2001	8103032019	3	2			Both	0.15	MMU	MMU	UD	UD	35	50	5	Non-Vacant	Residential
EL MONTE CA	10039 GIOVANE ST	91733-2001	8103032020	3	2			Both	0.15	MMU	MMU	UD	UD	35	50	5	Non-Vacant	Residential
EL MONTE CA	10033 GIOVANE ST	91733-2001	8103032021	3	2			Both	0.16	MMU	MMU	UD	UD	35	50	5	Non-Vacant	Residential
EL MONTE CA	MERCED AVE / GIOVANE ST		8103032028	0				Both	0.01	MMU	MMU	UD	UD	35	50	0	Non-Vacant	Commercial
EL MONTE CA	10010 GARVEY AVE	91733-2004	8103032035	2	2			Both	0.11	MMU	MMU	UD	UD	35	50	4	Non-Vacant	Commercial
EL MONTE CA	10968 GARVEY AVE	91733-2351	8104001001				11	Both	0.33	MMU	MMU	UD	UD	35	50	11	Non-Vacant	Commercial
EL MONTE CA	10938 GARVEY AVE	91733-2304	8104001004				8	Both	0.23	MMU	MMU	UD	UD	35	50	8	Non-Vacant	Commercial
EL MONTE CA	GARVEY AVE / NEVADA AVE		8104001023				4	Both	0.11	MMU	MMU	UD	UD	35	50	4	Non-Vacant	Commercial
EL MONTE CA	GARVEY AVE / NEVADA AVE		8104001024			12		Both	0.34	MMU	MMU	UD	UD	35	50	12	Non-Vacant	Commercial
EL MONTE CA	2817 TYLER AVE	91733-2325	8104001025			22	15	Both	1.07	MMU	MMU	UD	UD	35	50	37	Non-Vacant	Institutional
EL MONTE CA	10950 GARVEY AVE	91733-2351	8104001028				22	Both	0.62	MMU	MMU	UD	UD	35	50	22	Non-Vacant	Commercial
EL MONTE CA	2822 WASHINGTON AVE	91733-2332	8104005013			2		Both	0.11	MMU	MMU	UD	UD	35	50	2	Non-Vacant	Commercial

Jurisdiction Name	Site Address/Intersection	5 Digit ZIP Code	Assessor Parcel Number	Very Low-Income	Lower Income Capacity	Moderate Income Capacity	Above Moderate Income Capacity	Type of Shortfall	Parcel Size (Acres)	General Plan Designation (Current)	Zoning Designation (Current)	Optional Information5 Proposed GP	Optional Information6 Proposed Zoning	Minimum Density Allowed (units/acre)	Max Density Allowed (units/acre)	Total Capacity	Vacant/ Nonvacant	Description of Existing Uses
EL MONTE CA	10914 GARVEY AVE	91733-2304	8104005014			2		Both	0.09	MMU	MMU	UD	UD	35	50	2	Non-Vacant	Commercial
EL MONTE CA	10918 GARVEY AVE	91733-2304	8104005015			3		Both	0.10	MMU	MMU	UD	UD	35	50	3	Non-Vacant	Commercial
EL MONTE CA	2813 NEVADA AVE	91733-2319	8104005033			2		Both	0.06	MMU	MMU	UD	UD	35	50	2	Non-Vacant	Commercial
EL MONTE CA	10928 GARVEY AVE	91733-2304	8104005034			9	6	Both	0.44	MMU	MMU	UD	UD	35	50	15	Non-Vacant	Commercial
EL MONTE CA	GARVEY AVE / NEVADA AVE		8104005039			7		Both	0.19	MMU	MMU	UD	UD	35	50	7	Non-Vacant	Commercial
EL MONTE CA	10802 GARVEY AVE	91733-2302	8104006001				2	Both	0.12	MMU	MMU	UD	UD	35	30	2	Non-Vacant	Commercial
EL MONTE CA	10810 GARVEY AVE	91733-2302	8104006002				2	Both	0.12	MMU	MMU	UD	UD	35	30	2	Non-Vacant	Commercial
EL MONTE CA	10816 GARVEY AVE	91733-2302	8104006003				2	Both	0.12	MMU	MMU	UD	UD	35	30	2	Non-Vacant	Commercial
EL MONTE CA	10820 GARVEY AVE	91733-2302	8104006016				2	Both	0.12	MMU	MMU	UD	UD	35	30	2	Non-Vacant	Commercial
EL MONTE CA	10830 GARVEY AVE	91733-2302	8104006017				2	Both	0.11	MMU	MMU	UD	UD	35	30	2	Non-Vacant	Commercial
EL MONTE CA	10830 GARVEY AVE	91733-2302	8104006018				2	Both	0.11	MMU	MMU	UD	UD	35	30	2	Non-Vacant	Commercial
EL MONTE CA	2822 GAGE AVE	91733-2217	8104011001				2	Both	0.11	MMU	MMU	UD	UD	35	30	2	Non-Vacant	Commercial
EL MONTE CA	10742 GARVEY AVE	91733-2257	8104011002				1	Both	0.11	MMU	MMU	UD	UD	35	30	1	Non-Vacant	Commercial
EL MONTE CA	10744 GARVEY AVE	91733-2257	8104011003				1	Both	0.05	MMU	MMU	UD	UD	35	30	1	Non-Vacant	Commercial
EL MONTE CA	10746 GARVEY AVE	91733-2257	8104011004				1	Both	0.05	MMU	MMU	UD	UD	35	30	1	Non-Vacant	Commercial
EL MONTE CA	10748 GARVEY AVE	91733-2257	8104011026				1	Both	0.05	MMU	MMU	UD	UD	35	35	1	Non-Vacant	Commercial
EL MONTE CA	10748 GARVEY AVE	91733-2257	8104011027				1	Both	0.05	MMU	MMU	UD	UD	35	35	1	Non-Vacant	Commercial
EL MONTE CA	10754 GARVEY AVE	91733-2257	8104011028				2	Both	0.09	MMU	MMU	UD	UD	35	35	2	Non-Vacant	Commercial
EL MONTE CA	10760 GARVEY AVE	91733-2257	8104011029				2	Both	0.09	MMU	MMU	UD	UD	35	35	2	Non-Vacant	Commercial
EL MONTE CA	GARVEY AVE / LEXINGTON AVE		8104011030				5	Both	0.20	MMU	MMU	UD	UD	35	35	5	Non-Vacant	Residential
EL MONTE CA	10704 GARVEY AVE	91733-2206	8104012001				5	Both	0.21	MMU	MMU	UD	UD	35	30	5	Non-Vacant	Commercial
EL MONTE CA	10714 GARVEY AVE	91733-2206	8104012002				2	Both	0.11	MMU	MMU	UD	UD	35	30	2	Non-Vacant	Commercial
EL MONTE CA	10718 GARVEY AVE	91733-2206	8104012020				2	Both	0.11	MMU	MMU	UD	UD	35	30	2	Non-Vacant	Commercial
EL MONTE CA	10728 GARVEY AVE	91733-2206	8104012021				2	Both	0.11	MMU	MMU	UD	UD	35	30	2	Non-Vacant	Commercial
EL MONTE CA	10726 GARVEY AVE	91733-2206	8104012022				2	Both	0.11	MMU	MMU	UD	UD	35	30	2	Non-Vacant	Commercial
EL MONTE CA	10622 GARVEY AVE	91733-2204	8104013001			7		Both	0.19	MMU	MMU	UD	UD	35	50	7	Non-Vacant	Commercial
EL MONTE CA	10622 GARVEY AVE	91733-2204	8104013002			3		Both	0.07	MMU	MMU	UD	UD	35	50	3	Non-Vacant	Commercial
EL MONTE CA	11102 GARVEY AVE	91733-2425	8105002060				6	Both	0.43	MMU	MMU	UD	UD	35	30	6	Non-Vacant	Commercial
EL MONTE CA	2854 NEW DEAL AVE	91733-2431	8105003021				1	Both	0.06	MMU	MMU	UD	UD	35	30	1	Non-Vacant	Commercial
EL MONTE CA	11202 GARVEY AVE	91733-2427	8105003022				2	Both	0.08	MMU	MMU	UD	UD	35	30	2	Non-Vacant	Commercial
EL MONTE CA	11208 GARVEY AVE	91733-2484	8105003023				7	Both	0.32	MMU	MMU	UD	UD	35	30	7	Non-Vacant	Commercial
EL MONTE CA	11218 GARVEY AVE	91733-2427	8105003024				5	Both	0.39	MMU	MMU	UD	UD	35	30	5	Non-Vacant	Commercial
EL MONTE CA	2824 PECK RD	91733-2437	8105004010			6		Both	0.26	MMU	MMU	UD	UD	35	50	6	Non-Vacant	Commercial
EL MONTE CA	11300 GARVEY AVE	91732-3302	8105004011			3		Both	0.10	MMU	MMU	UD	UD	35	50	3	Non-Vacant	Commercial
EL MONTE CA	11306 GARVEY AVE	91732-3302	8105004012				16	Both	0.46	MMU	MMU	UD	UD	35	50	16	Non-Vacant	Commercial
EL MONTE CA	11312 GARVEY AVE	91732-3302	8105004013				7	Both	0.27	MMU	MMU	UD	UD	35	50	7	Non-Vacant	Commercial
EL MONTE CA	11318 GARVEY AVE	91732-3302	8105004015				21	Both	0.60	MMU	MMU	UD	UD	35	50	21	Non-Vacant	Commercial
EL MONTE CA	11424 GARVEY AVE	91732-3304	8105005001				3	Both	0.43	MMU	MMU	UD	UD	35	35	3	Non-Vacant	Commercial
EL MONTE CA	11408 GARVEY AVE	91732-3304	8105005016				3	Both	0.23	MMU	MMU	UD	UD	35	35	3	Non-Vacant	Commercial
EL MONTE CA	11414 GARVEY AVE	91732-3304	8105005017				4	Both	0.18	MMU	MMU	UD	UD	35	35	4	Non-Vacant	Commercial
EL MONTE CA	11436 GARVEY AVE	91732-3304	8105005023				12	Both	0.49	MMU	MMU	UD	UD	35	35	12	Non-Vacant	Commercial
EL MONTE CA	2843 MEEKER AVE	91732-3337	8105006006				6	Both	0.28	MMU	MMU	UD	UD	35	35	6	Non-Vacant	Commercial
EL MONTE CA	11528 GARVEY AVE	91732-3306	8105006007				9	Both	0.37	MMU	MMU	UD	UD	35	35	9	Non-Vacant	Commercial
EL MONTE CA	11512 GARVEY AVE	91732-3306	8105006010				7	Both	0.28	MMU	MMU	UD	UD	35	35	7	Non-Vacant	Commercial
EL MONTE CA	11504 GARVEY AVE	91732-3306	8105006011				3	Both	0.11	MMU	MMU	UD	UD	35	35	3	Non-Vacant	Commercial
EL MONTE CA	2840 MUSGROVE AVE	91732-3342	8105006012				1	Both	0.06	MMU	MMU	UD	UD	35	35	1	Non-Vacant	Residential
EL MONTE CA	2834 MUSGROVE AVE	91732-3342	8105006013				1	Both	0.06	MMU	MMU	UD	UD	35	35	1	Non-Vacant	Residential
EL MONTE CA	11017 GARVEY AVE	91733-2423	8566007001			10		Both	0.27	MMU	MMU	UD	UD	35	50	10	Non-Vacant	Commercial
EL MONTE CA	11031 GARVEY AVE	91733-2423	8566007002			3		Both	0.11	MMU	MMU	UD	UD	35	50	3	Non-Vacant	Commercial
EL MONTE CA	11033 GARVEY AVE	91733-2423	8566007003			4		Both	0.12	MMU	MMU	UD	UD	35	50	4	Non-Vacant	Commercial
EL MONTE CA	11047 GARVEY AVE	91733-2423	8566007004			4		Both	0.12	MMU	MMU	UD	UD	35	50	4	Non-Vacant	Commercial
EL MONTE CA	11016 CONCERT ST	91731-3418	8566007014				2	Both	0.16	MMU	MMU	UD	UD	35	35	2	Non-Vacant	Commercial
EL MONTE CA	3016 TYLER AVE	91731-3352	8566007017				3	Both	0.12	MMU	MMU	UD	UD	35	35	3	Non-Vacant	Commercial
EL MONTE CA	11059 GARVEY AVE	91733-2423	8566007020				9	Both	0.27	MMU	MMU	UD	UD	35	50	9	Non-Vacant	Commercial
EL MONTE CA	3024 TYLER AVE	91731-3352	8566007021				5	Both	0.25	MMU	MMU	UD	UD	35	35	5	Non-Vacant	Commercial
EL MONTE CA	11117 GARVEY AVE	91733-2424	8566008003				13	Both	0.39	MMU	MMU	UD	UD	35	50	13	Non-Vacant	Commercial
EL MONTE CA	11141 GARVEY AVE	91733-2424	8566008006			4		Both	0.12	MMU	MMU	UD	UD	35	50	4	Non-Vacant	Commercial
EL MONTE CA	11143 GARVEY AVE	91733-2424	8566008007			4		Both	0.12	MMU	MMU	UD	UD	35	50	4	Non-Vacant	Commercial
EL MONTE CA	11149 GARVEY AVE	91733-2424	8566008008			4		Both	0.13	MMU	MMU	UD	UD	35	50	4	Non-Vacant	Commercial
EL MONTE CA	11203 GARVEY AVE	91733-2426	8566008023			9		Both	0.25	MMU	MMU	UD	UD	35	50	9	Non-Vacant	Commercial
EL MONTE CA	11107 GARVEY AVE	91733-2424	8566008024				10	Both	0.29	MMU	MMU	UD	UD	35	50	10	Non-Vacant	Commercial
EL MONTE CA	GARVEY AVE / CONSOL AVE		8566008025			3		Both	0.09	MMU	MMU	UD	UD	35	50	3	Non-Vacant	Commercial
EL MONTE CA	11139 GARVEY AVE	91733-2424	8566008027			5		Both	0.16	MMU	MMU	UD	UD	35	50	5	Non-Vacant	Industrial
EL MONTE CA	11209 GARVEY AVE	91733-2426	8566009002			4		Both	0.13	MMU	MMU	UD	UD	35	50	4	Non-Vacant	Commercial
EL MONTE CA	11209 GARVEY AVE	91733-2426	8566009007			4		Both	0.12	MMU	MMU	UD	UD	35	50	4	Non-Vacant	Commercial
EL MONTE CA	11225 GARVEY AVE	91733-2426	8566009008				14	Both	0.42	MMU	MMU	UD	UD	35	50	14	Non-Vacant	Commercial
EL MONTE CA	3014 PECK RD	91731-3426	8566010005				3	Both	0.13	MMU	MMU	UD	UD	35	35	3	Non-Vacant	Commercial
EL MONTE CA	3020 PECK RD	91731-3426	8566010006				3	Both	0.13	MMU	MMU	UD	UD	35	35	3	Non-Vacant	Commercial
EL MONTE CA	3024 PECK RD	91731-3426	8566010007				2	Both	0.13	MMU	MMU	UD	UD	35	35	2	Non-Vacant	Commercial
EL MONTE CA	11314 CONCERT ST	91731-3424	8566010008				2	Both	0.15	MMU	MMU	UD	UD	35	35	2	Non-Vacant	Residential

Jurisdiction Name	Site Address/Intersection	5 Digit ZIP Code	Assessor Parcel Number	Very Low-Income	Lower Income Capacity	Moderate Income Capacity	Above Moderate Income Capacity	Type of Shortfall	Parcel Size (Acres)	General Plan Designation (Current)	Zoning Designation (Current)	Optional Information5 Proposed GP	Optional Information6 Proposed Zoning	Minimum Density Allowed (units/acre)	Max Density Allowed (units/acre)	Total Capacity	Vacant/ Nonvacant	Description of Existing Uses
EL MONTE CA	11320 CONCERT ST	91731-3424	8566010009				3	Both	0.16	MMU	MMU	UD	UD	35	35	3	Non-Vacant	Residential
EL MONTE CA	GARVEY AVE / N PECK RD		8566011032				12	Both	0.39	MMU	MMU	UD	UD	35	35	12	Vacant	Vacant
EL MONTE CA	3141 SANTA ANITA AVE	91733-1357	8580010027	5	4			Both	0.26	OC	O-C	UD	UD	35	50	9	Non-Vacant	Commercial
EL MONTE CA	3141 SANTA ANITA AVE	91733-1357	8580010028	8	7			Both	0.42	OC	O-C	UD	UD	35	50	15	Non-Vacant	Commercial
EL MONTE CA	3131 SANTA ANITA AVE	91733-1369	8580012017	21	21			Both	1.20	OC	O-C	UD	UD	35	50	42	Non-Vacant	Institutional
EL MONTE CA	10505 BODGER ST	91731-3311	8580012018	13	12			Both	0.70	OC	O-C	UD	UD	35	50	25	Non-Vacant	Commercial
EL MONTE CA	10319 GARVEY AVE	91733-2135	8580013020				9	Both	0.54	MU	MU	UD	UD	35	50	9	Non-Vacant	Commercial
EL MONTE CA	10327 GARVEY AVE	91733-2199	8580013022				19	Both	0.55	MU	MU	UD	UD	35	50	19	Non-Vacant	Commercial
EL MONTE CA	3039 SANTA ANITA AVE	91733-1355	8580014001			36	19	Both	1.64	MU	MU	UD	UD	35	50	55	Non-Vacant	Institutional
EL MONTE CA	3015 SANTA ANITA AVE	91733-1355	8580014002			15		Both	0.47	MU	MU	UD	UD	35	50	15	Non-Vacant	Residential
EL MONTE CA	10515 GARVEY AVE	91733-2220	8580014004			2		Both	0.07	MU	MU	UD	UD	35	50	2	Non-Vacant	Commercial
EL MONTE CA	GARVEY AVE / SANTA ANITA AVE		8580014006			4		Both	0.10	MU	MU	UD	UD	35	50	4	Non-Vacant	Commercial
EL MONTE CA	10425 GARVEY AVE	91733-2220	8580014008			5		Both	0.21	MU	MU	UD	UD	35	50	5	Non-Vacant	Commercial
EL MONTE CA	10421 GARVEY AVE	91733-2220	8580014009			7		Both	0.21	MU	MU	UD	UD	35	50	7	Non-Vacant	Industrial
EL MONTE CA	10413 GARVEY AVE	91733-2220	8580014010			7		Both	0.21	MU	MU	UD	UD	35	50	7	Non-Vacant	Commercial
EL MONTE CA	GARVEY AVE / DOREEN AVE		8580014011			7		Both	0.20	MU	MU	UD	UD	35	50	7	Non-Vacant	Commercial
EL MONTE CA	10407 GARVEY AVE	91733-2220	8580014012			14		Both	0.39	MU	MU	UD	UD	35	50	14	Non-Vacant	Commercial
EL MONTE CA	10353 GARVEY AVE	91733-2131	8580014013			7		Both	0.19	MU	MU	UD	UD	35	50	7	Non-Vacant	Industrial
EL MONTE CA	10727 GARVEY AVE	91733-2205	8580021001			5		Both	0.15	MMU	MMU	UD	UD	35	50	5	Non-Vacant	Commercial
EL MONTE CA	10721 GARVEY AVE	91733-2205	8580021002			3		Both	0.07	MMU	MMU	UD	UD	35	50	3	Non-Vacant	Commercial
EL MONTE CA	10717 GARVEY AVE	91733-2205	8580021003			1		Both	0.03	MMU	MMU	UD	UD	35	50	1	Non-Vacant	Commercial
EL MONTE CA	10715 GARVEY AVE	91733-2205	8580021004			3		Both	0.08	MMU	MMU	UD	UD	35	50	3	Non-Vacant	Commercial
EL MONTE CA	10701 GARVEY AVE	91733-2205	8580021009			12		Both	0.35	MMU	MMU	UD	UD	35	50	12	Non-Vacant	Commercial
EL MONTE CA	10755 GARVEY AVE	91733-2256	8580022001			4		Both	0.11	MMU	MMU	UD	UD	35	50	4	Non-Vacant	Commercial
EL MONTE CA	10755 GARVEY AVE	91733-2256	8580022002			3		Both	0.12	MMU	MMU	UD	UD	35	50	3	Non-Vacant	Commercial
EL MONTE CA	10745 GARVEY AVE	91733-2256	8580022003			4		Both	0.12	MMU	MMU	UD	UD	35	50	4	Non-Vacant	Commercial
EL MONTE CA	10735 GARVEY AVE	91733-2256	8580022009			3		Both	0.12	MMU	MMU	UD	UD	35	50	3	Non-Vacant	Commercial
EL MONTE CA	GARVEY AVE / GAGE AVE		8580022022			4		Both	0.12	MMU	MMU	UD	UD	35	50	4	Non-Vacant	Commercial
EL MONTE CA	GARVEY AVE / GAGE AVE		8580022023			4		Both	0.11	MMU	MMU	UD	UD	35	50	4	Non-Vacant	Commercial
EL MONTE CA	10819 GARVEY AVE	91733-2301	8580026011			4		Both	0.11	MMU	MMU	UD	UD	35	50	4	Non-Vacant	Commercial
EL MONTE CA	10823 GARVEY AVE	91733-2301	8580026012			3		Both	0.11	MMU	MMU	UD	UD	35	50	3	Non-Vacant	Commercial
EL MONTE CA	10829 GARVEY AVE	91733-2301	8580026013			4		Both	0.12	MMU	MMU	UD	UD	35	50	4	Non-Vacant	Commercial
EL MONTE CA	10813 GARVEY AVE	91733-2301	8580026026			7		Both	0.20	MMU	MMU	UD	UD	35	50	7	Non-Vacant	Commercial
EL MONTE CA	10803 GARVEY AVE	91733-2301	8580026027			10		Both	0.34	MMU	MMU	UD	UD	35	50	10	Non-Vacant	Commercial
EL MONTE CA	10905 GARVEY AVE	91733-2303	8580027010			5		Both	0.15	MMU	MMU	UD	UD	35	50	5	Non-Vacant	Commercial
EL MONTE CA	10911 GARVEY AVE	91733-2303	8580027011			3		Both	0.12	MMU	MMU	UD	UD	35	50	3	Non-Vacant	Commercial
EL MONTE CA	10915 GARVEY AVE	91733-2303	8580027012			3		Both	0.11	MMU	MMU	UD	UD	35	50	3	Non-Vacant	Commercial
EL MONTE CA	10927 GARVEY AVE	91733-2303	8580027013			9		Both	0.27	MMU	MMU	UD	UD	35	50	9	Non-Vacant	Commercial
EL MONTE CA	9877 GARVEY AVE	91733-1269	8581018001				8	Both	0.32	MMU	MMU	UD	UD	35	35	8	Non-Vacant	Commercial
EL MONTE CA	9869 GARVEY AVE	91733-1269	8581018002				7	Both	0.27	MMU	MMU	UD	UD	35	35	7	Non-Vacant	Commercial
EL MONTE CA	9863 GARVEY AVE	91733-1269	8581018003				7	Both	0.27	MMU	MMU	UD	UD	35	35	7	Non-Vacant	Commercial
EL MONTE CA	3006 SASTRE AVE	91733-1216	8581018011				4	Both	0.32	MMU	MMU	UD	UD	35	35	4	Non-Vacant	Commercial
EL MONTE CA	9849 GARVEY AVE	91733-1269	8581018012				5	Both	0.27	MMU	MMU	UD	UD	35	35	5	Non-Vacant	Commercial
EL MONTE CA	9859 GARVEY AVE	91733-1269	8581018013				5	Both	0.29	MMU	MMU	UD	UD	35	35	5	Non-Vacant	Commercial
EL MONTE CA	10005 GARVEY AVE	91733-2003	8581023001			12		Both	0.34	MU	MU	UD	UD	35	50	12	Non-Vacant	Commercial
EL MONTE CA	10021 GARVEY AVE	91733-2003	8581023002			6		Both	0.17	MU	MU	UD	UD	35	50	6	Non-Vacant	Commercial
EL MONTE CA	10025 GARVEY AVE	91733-2003	8581023003			6		Both	0.17	MU	MU	UD	UD	35	50	6	Non-Vacant	Industrial
EL MONTE CA	10147 GARVEY AVE	91733-2005	8581025009				2	Both	0.24	MU	MU	UD	UD	35	30	2	Non-Vacant	Commercial
EL MONTE CA	10143 GARVEY AVE	91733-2005	8581025010				5	Both	0.24	MU	MU	UD	UD	35	30	5	Non-Vacant	Commercial
EL MONTE CA	10151 GARVEY AVE	91733-2005	8581025021				11	Both	0.53	MU	MU	UD	UD	35	30	11	Non-Vacant	Commercial
EL MONTE CA	10139 GARVEY AVE	91733-2005	8581025022				9	Both	0.44	MU	MU	UD	UD	35	30	9	Non-Vacant	Commercial
EL MONTE CA	11636 GARVEY AVE	91732-3374	8105007001	11	11			Both	0.68	MMU	MMU	UD	UD	35	50	22	Non-Vacant	Commercial
EL MONTE CA	11642 GARVEY AVE	91732-3308	8105007002	12	12			Both	0.68	MMU	MMU	UD	UD	35	50	24	Non-Vacant	Industrial
EL MONTE CA	11652 GARVEY AVE	91732-3308	8105007003	12	12			Both	0.67	MMU	MMU	UD	UD	35	50	24	Non-Vacant	Commercial
EL MONTE CA	11700 GARVEY AVE	91732-4527	8105007004	4	4			Both	0.60	MMU	MMU	UD	UD	35	50	8	Non-Vacant	Residential
EL MONTE CA	11618 GARVEY AVE	91732-4514	8105007031			6		Both	0.37	MMU	MMU	UD	UD	35	50	6	Non-Vacant	Commercial
EL MONTE CA	11626 GARVEY AVE	91732-3308	8105007032			6		Both	0.18	MMU	MMU	UD	UD	35	50	6	Non-Vacant	Commercial
EL MONTE CA	11606 GARVEY AVE	91732-3343	8105007051			24		Both	0.68	MMU	MMU	UD	UD	35	50	24	Non-Vacant	Commercial
EL MONTE CA	11720 GARVEY AVE	91732-3310	8105007053	15	14			Both	1.13	MMU	MMU	UD	UD	35	50	29	Non-Vacant	Commercial
EL MONTE CA	12052 VALLEY BLVD	91732-3137	8106003001				8	Both	0.33	GC	C-4	UD	UD	35	35	8	Non-Vacant	Commercial
EL MONTE CA	12060 VALLEY BLVD	91732-3137	8106003019				12	Both	0.47	GC	C-4	UD	UD	35	35	12	Non-Vacant	Commercial
EL MONTE CA	3025 ALLGEYER AVE	91732-3505	8106003020			7		Both	0.25	GC	C-4	UD	UD	35	50	7	Non-Vacant	Residential
EL MONTE CA	VALLEY BLVD / ALLGEYER AVE		8106003021			2		Both	0.07	GC	C-4	UD	UD	35	50	2	Non-Vacant	Commercial
EL MONTE CA	12072 E VALLEY BLVD	91732	8106003022			21		Both	0.68	GC	C-4	UD	UD	35	50	21	Non-Vacant	Commercial
EL MONTE CA	12086 VALLEY BLVD	91732-3137	8106003023			3		Both	0.08	GC	C-4	UD	UD	35	50	3	Non-Vacant	Commercial
EL MONTE CA	11743 VALLEY BLVD	91732-3037	8565011012				17	Both	0.49	GC	C-3	UD	UD	35	50	17	Non-Vacant	Commercial
EL MONTE CA	11733 VALLEY BLVD	91732-3073	8565011013				16	Both	0.49	GC	C-3	UD	UD	35	50	16	Non-Vacant	Commercial
EL MONTE CA	11831 VALLEY BLVD	91732-3039	8565012001			13		Both	0.37	GC	C-3	UD	UD	35	50	13	Non-Vacant	Commercial
EL MONTE CA	11821 VALLEY BLVD	91732-3039	8565012002			13		Both	0.36	GC	C-3	UD	UD	35	50	13	Non-Vacant	Commercial
EL MONTE CA	11817 VALLEY BLVD	91732-3039	8565012003			4		Both	0.16	GC	C-3	UD	UD	35	50	4	Non-Vacant	Commercial

Jurisdiction Name	Site Address/Intersection	5 Digit ZIP Code	Assessor Parcel Number	Very Low-Income	Lower Income Capacity	Moderate Income Capacity	Above Moderate Income Capacity	Type of Shortfall	Parcel Size (Acres)	General Plan Designation (Current)	Zoning Designation (Current)	Optional Information ⁵ Proposed GP	Optional Information ⁶ Proposed Zoning	Minimum Density Allowed (units/acre)	Max Density Allowed (units/acre)	Total Capacity	Vacant/Nonvacant	Description of Existing Uses
EL MONTE CA	11813 VALLEY BLVD	91732-3074	8565012004			9		Both	0.44	GC	C-3	UD	UD	35	50	9	Non-Vacant	Commercial
EL MONTE CA	11769 VALLEY BLVD	91732-3037	8565012005				21	Both	0.60	GC	C-3	UD	UD	35	50	21	Non-Vacant	Commercial
EL MONTE CA	11805 VALLEY BLVD	91732-3039	8565012016			21		Both	0.60	GC	C-3	UD	UD	35	50	21	Non-Vacant	Commercial
EL MONTE CA	VALLEY BLVD / MOUNTAIN VIEW RD		8565012017				15	Both	0.43	GC	C-3	UD	UD	35	50	15	Non-Vacant	Commercial
EL MONTE CA	11747 VALLEY BLVD	91732-3037	8565012018				26	Both	0.74	GC	C-3	UD	UD	35	50	26	Non-Vacant	Commercial
EL MONTE CA	11833 VALLEY BLVD	91732-3039	8565013001			19		Both	0.59	GC	C-3	UD	UD	35	50	19	Non-Vacant	Commercial
EL MONTE CA	11847 VALLEY BLVD	91732-3039	8565013002			21		Both	0.60	GC	C-3	UD	UD	35	50	21	Non-Vacant	Commercial
EL MONTE CA	11853 VALLEY BLVD	91732-3039	8565013003			10		Both	0.30	GC	C-3	UD	UD	35	50	10	Non-Vacant	Commercial
EL MONTE CA	11859 VALLEY BLVD	91732-3039	8565013004			10		Both	0.30	GC	C-3	UD	UD	35	50	10	Non-Vacant	Commercial
EL MONTE CA	11863 VALLEY BLVD	91732-3039	8565013005			19		Both	0.54	GC	C-3	UD	UD	35	50	19	Non-Vacant	Commercial
EL MONTE CA	GARVEY AVE / LA MADERA AVE		8565015029			66	34	Both	2.87	MMU	MMU	UD	UD	35	50	100	Vacant	Vacant
EL MONTE CA	11820 VALLEY BLVD	91732-3040	8565016001	86	86		75	Both	7.11	GC	C-3	UD	UD	35	50	247	Non-Vacant	Commercial
EL MONTE CA	3134 MOUNTAIN VIEW RD	91732-3132	8565018030	17	17			Both	0.18	MMU	MMU	UD	UD	35	50	34	Vacant	Vacant
EL MONTE CA	12051 GARVEY AVE	91732-3109	8565019015			52	35	Both	2.47	GC	C-3	UD	UD	35	50	87	Non-Vacant	Recreational
EL MONTE CA	12087 VALLEY BLVD	91732-3103	8565020027	21	20			Both	1.18	RC	C-3	UD	UD	35	50	41	Non-Vacant	Commercial
EL MONTE CA	12102 GARVEY AVE	91732-3112	8565020029	23	22		25	Both	2.01	RC	C-3	UD	UD	35	50	70	Non-Vacant	Commercial
EL MONTE CA	11730 VALLEY BLVD	91732-3038	8566021010				8	Both	0.22	MMU	MMU	UD	UD	35	50	8	Vacant	Vacant
EL MONTE CA	11710 VALLEY BLVD	91732-3038	8566021011				44	Both	1.20	MMU	MMU	UD	UD	35	50	44	Vacant	Vacant
EL MONTE CA	11654 VALLEY BLVD	91732-3036	8566021012				18	Both	0.50	MMU	MMU	UD	UD	35	50	18	Vacant	Vacant
EL MONTE CA	11650 VALLEY BLVD	91732-3036	8566021013				12	Both	0.32	MMU	MMU	UD	UD	35	50	12	Vacant	Vacant
EL MONTE CA						8		Both	0.23	GC	C-3	UD	UD	35	50	8	Non-Vacant	Commercial
EL MONTE CA	2806 TYLER AVE	91733-2326	8105001051	3	2			Unaccommodated Need	0.91	MMU	MMU	RF-OZ	RF-OZ	0	25	5	Non-Vacant	Religious Facility
EL MONTE CA	2735 DURFEE AVE	91732-3415	8106014008	5	5			Unaccommodated Need	1.26	MMU	MMU	RF-OZ	RF-OZ	0	25	10	Non-Vacant	Religious Facility
EL MONTE CA	12329 FELIPE ST	91732-3675	8108008011	5	4			Unaccommodated Need	0.56	R1-B	R1-B	RF-OZ	RF-OZ	0	25	9	Non-Vacant	Religious Facility
EL MONTE CA	11423 LOWER AZUSA RD	91732-1330	8538008013	8	7	5		Unaccommodated Need	0.69	R3	R-3	RF-OZ	RF-OZ	0	25	20	Non-Vacant	Religious Facility
EL MONTE CA	11330 FAIRVIEW ST	91732-1038	8538008043	8	7			Unaccommodated Need	2.16	R1-B	R1-B	RF-OZ	RF-OZ	0	25	15	Non-Vacant	Religious Facility
EL MONTE CA	11345 LOWER AZUSA RD	91732-1366	8538008060	6	6			Unaccommodated Need	1.14	R3	R-3	RF-OZ	RF-OZ	0	25	12	Non-Vacant	Religious Facility
EL MONTE CA	4530 PECK RD	91732-1910	8547018124	4	3			Unaccommodated Need	0.89	MMU	MMU	RF-OZ	RF-OZ	0	25	7	Non-Vacant	Religious Facility
EL MONTE CA	4530 PECK RD	91732-1910	8547018124	3	3			Unaccommodated Need	0.62	MMU	MMU	RF-OZ	RF-OZ	0	25	6	Non-Vacant	Religious Facility
EL MONTE CA	4114 PECK RD	91732-2248	8548013048	3	2			Unaccommodated Need	0.49	MMU	MMU	RF-OZ	RF-OZ	0	25	5	Non-Vacant	Religious Facility
EL MONTE CA	4114 PECK RD	91732-2248	8548013048	2	2			Unaccommodated Need	0.49	MMU	MMU	RF-OZ	RF-OZ	0	25	4	Non-Vacant	Religious Facility
EL MONTE CA	3141 PECK RD	91731-3427	8566004012	1				Unaccommodated Need	0.28	MMU	MMU	RF-OZ	RF-OZ	0	25	1	Non-Vacant	Religious Facility
EL MONTE CA	3141 PECK RD	91731-3427	8566004012	1	1		1	Unaccommodated Need	0.91	MMU	MMU	RF-OZ	RF-OZ	0	25	3	Non-Vacant	Religious Facility
EL MONTE CA	11608 VALLEY BLVD	91732-3070	8566022014	8	7	5		Unaccommodated Need	1.97	RC	C-3	RF-OZ	RF-OZ	0	25	20	Non-Vacant	Religious Facility
EL MONTE CA	11359 COFFIELD AVE	91731-2756	8568025018	8	7	5		Unaccommodated Need	3.34	NC	C-1	RF-OZ	RF-OZ	0	25	20	Non-Vacant	Religious Facility
EL MONTE CA	4366 SANTA ANITA AVE	91731-1606	8569013045	3	3			Unaccommodated Need	1.21	NC	C-2	RF-OZ	RF-OZ	0	25	6	Non-Vacant	Religious Facility
EL MONTE CA	11025 LAMBERT AVE	91731-1627	8569013047	8	7			Unaccommodated Need	0.18	NC	C-2	RF-OZ	RF-OZ	0	25	15	Non-Vacant	Religious Facility
EL MONTE CA	4215 TYLER AVE	91731-1629	8575010012			4		Unaccommodated Need	0.60	R4	R-4	RF-OZ	RF-OZ	0	25	4	Non-Vacant	Religious Facility
EL MONTE CA	4017 TYLER AVE	91731-2039	8575013040	5	5			Unaccommodated Need	1.34	R1-A	R1-A	RF-OZ	RF-OZ	0	25	10	Non-Vacant	Religious Facility
EL MONTE CA	3903 TYLER AVE	91731-2037	8575014001	5	5	5		Unaccommodated Need	2.09	R1-A	R1-A	RF-OZ	RF-OZ	0	25	15	Non-Vacant	Religious Facility
EL MONTE CA	3039 SANTA ANITA AVE	91733-1355	8580014001	9	8			Unaccommodated Need	1.64	OC	C-1	RF-OZ	RF-OZ	0	25	17	Non-Vacant	Religious Facility
EL MONTE CA	3015 SANTA ANITA AVE	91733-1355	8580014002	5	4			Unaccommodated Need	0.47	OC	C-1	RF-OZ	RF-OZ	0	25	9	Non-Vacant	Religious Facility
EL MONTE CA	10515 GARVEY AVE	91733-2220	8580014004				1	Unaccommodated Need	0.07	C1	C-1	RF-OZ	RF-OZ	0	25	1	Non-Vacant	Religious Facility
EL MONTE CA	GARVEY AVE / SANTA ANITA AVE		8580014006				1	Unaccommodated Need	0.10	OC	C-1	RF-OZ	RF-OZ	0	25	1	Non-Vacant	Religious Facility
EL MONTE CA	3042 SANTA ANITA AVE	91733-1356	8580015022				1	Unaccommodated Need	0.13	OC	C-1	RF-OZ	RF-OZ	0	25	1	Non-Vacant	Religious Facility
EL MONTE CA	3042 SANTA ANITA AVE	91733-1356	8580015022				1	Unaccommodated Need	0.25	OC	C-1	RF-OZ	RF-OZ	0	25	1	Non-Vacant	Religious Facility
EL MONTE CA	3042 SANTA ANITA AVE	91733-1356	8580015022				1	Unaccommodated Need	0.12	OC	C-1	RF-OZ	RF-OZ	0	25	1	Non-Vacant	Religious Facility
EL MONTE CA	3042 SANTA ANITA AVE	91733-1356	8580015022				1	Unaccommodated Need	0.12	OC	C-1	RF-OZ	RF-OZ	0	25	1	Non-Vacant	Religious Facility
EL MONTE CA	3042 SANTA ANITA AVE	91733-1356	8580015022				1	Unaccommodated Need	0.13	OC	C-1	RF-OZ	RF-OZ	0	25	1	Non-Vacant	Religious Facility
EL MONTE CA	3042 SANTA ANITA AVE	91733-1356	8580015022				1	Unaccommodated Need	0.14	OC	C-1	RF-OZ	RF-OZ	0	25	1	Non-Vacant	Religious Facility
EL MONTE CA	3042 SANTA ANITA AVE	91733-1356	8580015022				1	Unaccommodated Need	0.14	OC	C-1	RF-OZ	RF-OZ	0	25	1	Non-Vacant	Religious Facility

Table C: Land Use, Table Starts in A2

Zoning Designation (From Table A, Column G)	General Land Uses Allowed
Neighborhood Commercial (C-1)	Café/coffeehouse; commercial cannabis retailers/testing labs; conservatory of music; employment agency; government/government-related enterprises; medical lab; multiple-family housing; music/vocal instruction; offices; prescription pharmacy; public (educational institutions/parks/rec; auto parking areas; shops/stores; meat markets/deli stores; restaurants; personal care facility; accessory buildings necessary to such uses.
Retail Commercial (C-2)	In addition to all uses permitted in C-1 - retail stores; ambulance service; auto parking areas; bakeries; pet shops; cleaning establishments; department stores; electric distributing substations; furniture stores; public parking garages; hardware stores; music stores; public buildings; restaurants; studios; sign painting; auto parts/accessory stores; accessory buildings necessary to such uses.
General Commercial (C-3)	In addition to all uses permitted in C-2 - retail/wholesale stores; furniture warehouses; public garages; plumbing shops; printing shops; trailers/campers sales; taxidermists; auto upholstery shops; plant nurseries; spiritual specialty shops; commercial cannabis cultivation/manufacturing sites; commercial cannabis distributors/microbusinesses; accessory buildings necessary to such uses.
Gateway Specific Plan (GSP)	Multi-family/live-work/senior residential uses and mixed-use development (development review required); parks/playgrounds/open space; bicycle/ped trails; arcades; dance academies; music conservatory; music/vocal instruction; trade schools; printing establishments; charitable institutions; auto parts/accessory stores; bakery/beauty shops; pet shops; stores/shops; cafes; pharmacy; restaurants; financial institutions; daycare; medical labs; laundries; shoe repair/tailor shops; parking areas/structures.
Mixed/Multi-use (MMU)	In addition to all uses permitted in C-1 and C-2 zones (except commercial cannabis testing labs) - auto parking lots/structures; shops; care facilities; department stores; multi-family dwellings; financial institutions; florist/furniture/grocery stores/shops; live/work; meat market/deli; mixed-use development; music stores; office uses; personal care facility; restaurants; senior housing; supportive housing; transitional housing.
Office Commercial (O-C)	Café/coffeehouse; commercial cannabis retailers/testing labs; conservatory of music; employment agency; government/government-related enterprises; medical lab; multiple-family housing; music/vocal instruction; offices; prescription pharmacy; public (educational institutions/parks/rec; accessory buildings necessary to such uses.
Office Professional (O-P)	Café/coffeehouse; commercial cannabis retailers/testing labs; conservatory of music; employment agency; government/government-related enterprises; medical lab; multiple-family housing; music/vocal instruction; offices; prescription pharmacy; public (educational institutions/parks/rec; accessory buildings necessary to such uses.
One-family Dwelling (R1-B)	Residential uses (two one-family dwellings with restrictions); ancillary/other uses (accessory buildings, garage sales, government enterprises, home occupations, manufactured homes, private greenhouses); public educational institutions, public parks/community buildings; trailer for housing; supportive housing; transitional housing; transitional parking; animal breeding/raising; keeping of horses (with restrictions); manufactured home.
High Density Multi-family Residential (R-4)	Residential uses; ancillary/other uses (accessory buildings, garage sales, government enterprises, home occupations, manufactured homes, private greenhouses); public educational institutions, public parks/community buildings; trailer for housing; supportive housing; transitional housing; transitional parking; group dwellings; manufactured home.
Downtown Specific Plan/Monte Vista (DSP/MV)	Dwelling-Multi-family; home occupation; mixed-use development (integrated vertically); senior citizen housing; athletic clubs/health spa; government buildings; parks/playgrounds/safe; public/community buildings; fast food (no drive through); restaurants (no alcohol); auto parts/accessory store; department store; drug store/pharmacy; financial institution; grocery/market; hardware store; instructional services; laundry/dry cleaning; medical office uses; office uses; personal care facility; retail store (no alcohol).
Downtown Specific Plan/Station (DSP/ST)	Dwelling-Multi-family; home occupation; live/work; mixed-use development (integrated vertically); senior citizen housing; athletic clubs/health spa; private auto parking structure; parks/playgrounds/safe; public/community buildings; fast food (no drive through); restaurants (no alcohol); drug store/pharmacy; financial institution; grocery/market; instructional services; laundry/dry cleaning; medical office uses; office uses; personal care facility; retail store (no alcohol).

Zoning Designation (From Table A, Column G)	General Land Uses Allowed
Downtown Specific Plan/Zocalo (DSP/ZC)	Dwelling-Multi-family; home occupation; live/work; mixed-use development (integrated vertically); senior citizen housing; athletic clubs/health spa; parks/playgroundscafe; fast food (no drive through); restaurants (no alcohol); drug store/pharmacy; grocery/market; instructional services; laundry/dry cleaning; medical office uses; multi-tenant commercial; office uses; personal care facility; retail store (no alcohol).