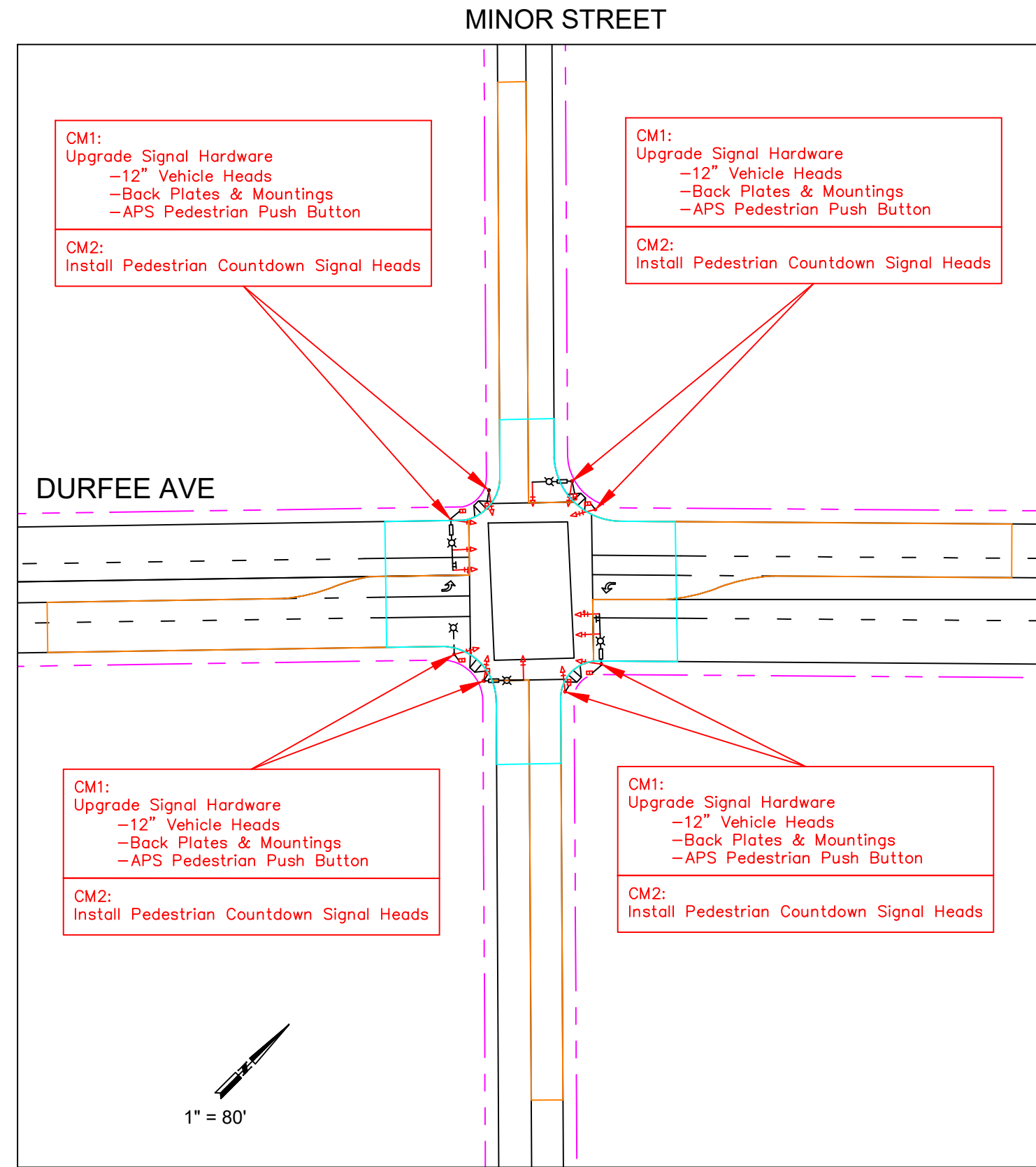


LOCATION MAP
(EL MONTE)

Traffic Signal Hardware Removal & Replacement Quantity Table

#	INT. NAME	12" VEHICLE HEADS	APS PPB	PED COUNTDOWN
1	Fineview St	12	8	8
2	Klingerman St	12	8	8
3	Elliott	12	8	8
4	Magnolia St	12	8	8
5	Valley Blvd	19	8	8
6	Stoddard Way	15	6	6
7	Exline St	12	6	6

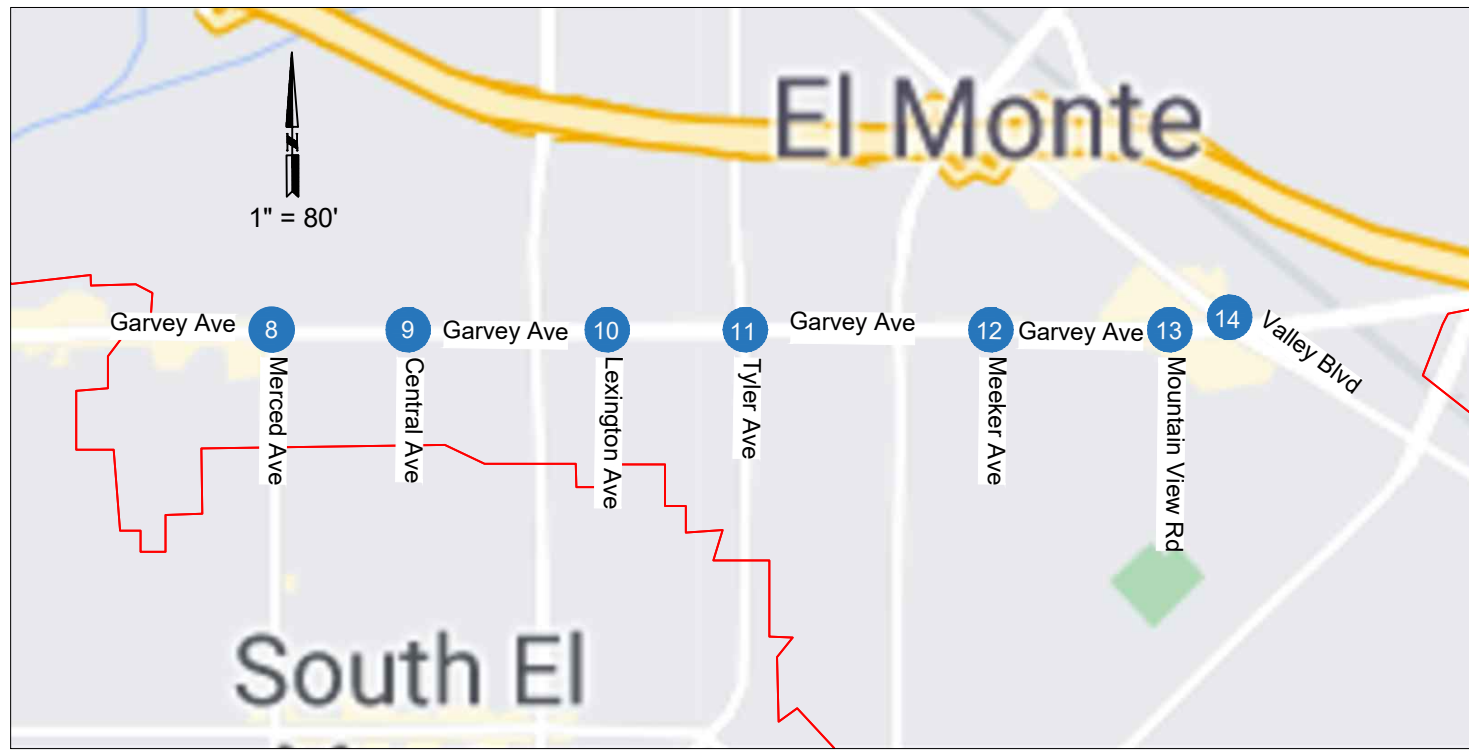


TYPICAL TRAFFIC SIGNAL PLAN VIEW

LEGEND

- EXISTING EQUIPMENT
- PROPOSED EQUIPMENT
- RIGHT OF WAY
- COUNTERMEASURE 1 INFLUENCE AREA : S02 IMPROVE SIGNAL HARDWARE (WITHIN 250' OF THE INTERSECTION APPROACH DIRECTION)
- COUNTERMEASURE 2 INFLUENCE AREA: S17PB INSTALL PEDESTRIAN COUNTDOWN SIGNAL HEADS (WITHIN 50' OF THE INTERSECTION)

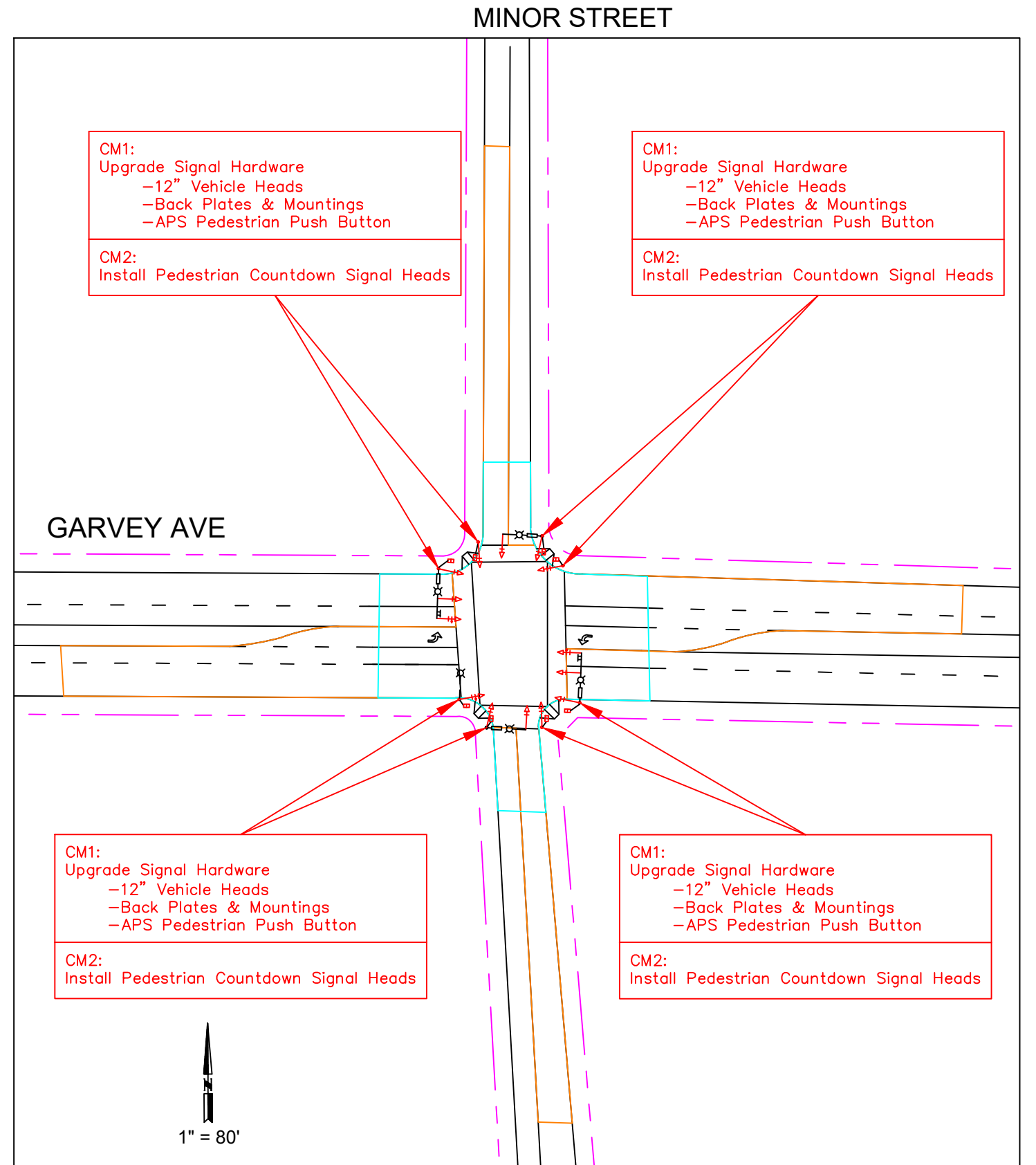
\\wgf-hnd-nas-wgc.com\Engineering\110142 - El Monte HSIP Cycle 10 Grant Application\400- HSIP Cycle 10 Applications\2 - Garvey Ave & Durfee Ave IS Improvements\Exhibits\C-CONCEPT.dwg Sep 25, 20



LOCATION MAP
(EL MONTE)

Traffic Signal Hardware Removal & Replacement Quantity Table

#	INT. NAME	12" VEHICLE HEADS	APS PPB	PED COUNTDOWN
8	Merced Ave	12	8	8
9	Central Ave	13	8	8
10	Lexington Ave	10	8	8
11	Tyler Ave	12	8	8
12	Meeker Ave	19	8	8
13	Mountain View Rd	14	8	8
14	Valley Blvd	16	8	8



TYPICAL TRAFFIC SIGNAL PLAN VIEW

LEGEND

- > EXISTING EQUIPMENT
- > PROPOSED EQUIPMENT
- RIGHT OF WAY
- COUNTERMEASURE 1 INFLUENCE AREA : S02 IMPROVE SIGNAL HARDWARE (WITHIN 250' OF THE INTERSECTION APPROACH DIRECTION)
- COUNTERMEASURE 2 INFLUENCE AREA: S17PB INSTALL PEDESTRIAN COUNTDOWN SIGNAL HEADS (WITHIN 50' OF THE INTERSECTION)